

## Excellent Integrated System Limited

Stocking Distributor

Click to view price, real time Inventory, Delivery & Lifecycle Information:

[Schurter](#)  
[0033.4501](#)

For any questions, you can email us directly:  
[sales@integrated-circuit.com](mailto:sales@integrated-circuit.com)

**Voltage Selector**

www.schurter.com/PG04

Voltage selector switch, 2 stages, serie-parallel, panel mounting



**Description**

- Voltage Selector, 2 stages
- Series-parallel connections
- Solder terminals

**Standards**

- IEC 61058-2-5
- UL 508
- CSA C22.2 no. 14

**References**

Alternative: version for PCB mounting [SWA2 \(Print\)](#)

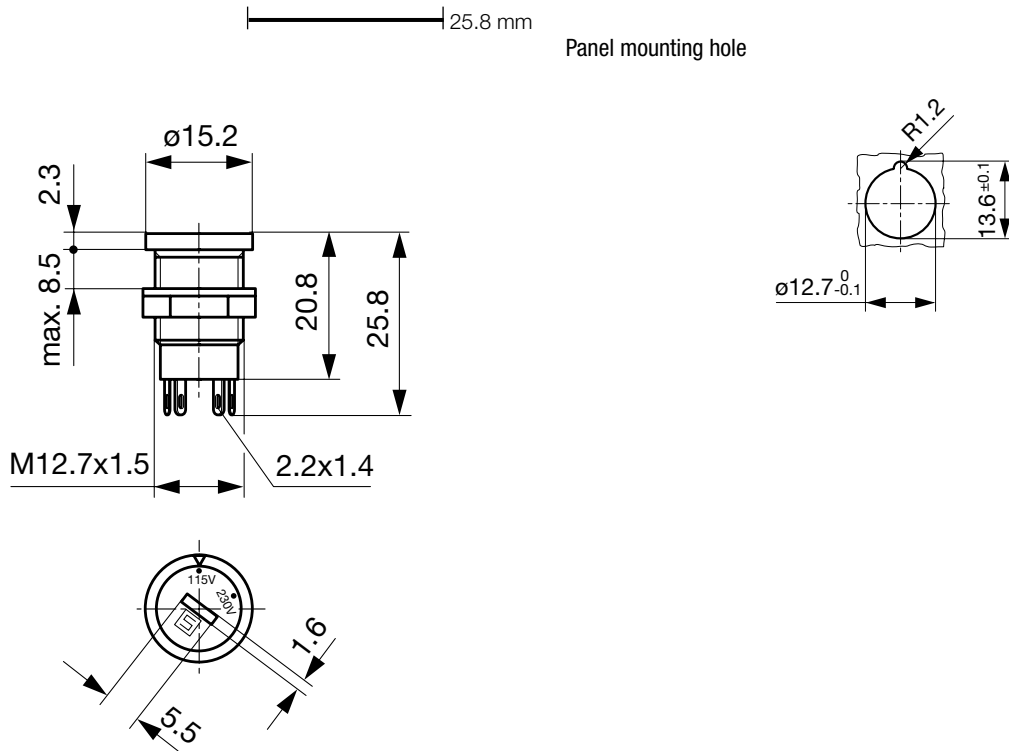
**Technical Data**

Ratings	IEC: 6.3 A / 250 VAC; 50 Hz	Solderability	350 °C / 2 sec acc. to IEC 60068-2-20, Test Ta, method 2	
	UL: 6.3 A / 250 VAC; 60 Hz		Resistance to Soldering Heat	350 °C / 10 sec acc. to IEC 60068-2-20, Test Tb, method 2
	CSA: 6.3 A / 250 VAC; 60 Hz			Insulation Resistance
Mounting	Panel Mount from front side	Contact Resistance	< 10 mΩ at 20 mV	
Fastening	Screw-on mounting	Dielectric Strength	> 2kVAC between L-N > 4kVAC between L/N-PE (1min; 50Hz)	
Terminal	Solder	Clearance and Creepage Distance	> 3mm > 8mm between L/N-PE	
Number of Stages	2	Resistance to Vibration	acc. to IEC 60068-2-6, test Fc	
Lifetime	300 operating cycles (without load)	Panel Thickness s	max 8.5 mm	
Degree of Protection	IP 40			
Protection Class	Suitable for appliances with protection class II acc. to IEC 61140			
Allowable Operation Temp.	-40 °C to 85 °C			
Climatic Category	25/85/21 acc. to IEC 60068-1			
Material: Socket	Thermoplastic, black, UL 94V-0			
Weight	3.9 g			

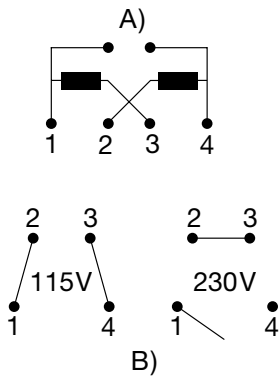
# SWA1 (Frontp)

Voltage Selector  
www.schurter.com/PG04

## Dimension



## Diagrams



A) Power mains

B) Internal contact arrangement for series-parallel connection

## All Variants

Letterings		Order Number
Stage 1	Stufe 2	
110	220	0033.4501
115	220	0033.4502
120	240	0033.4503
115	230	0033.4504
50 Hz	60 Hz	0033.4508
LO	HI	0033.4513
		0033.4514
0	1	0033.4518
A	B	0033.4521
TEST	RUN	0033.4524

Most Popular.

**Voltage Selector**

[www.schurter.com/PG04](http://www.schurter.com/PG04)

---

**Letterings**

**Order Number**

**Stage 1**

**Stufe 2**

Availability for all products can be searched real-time:  
<http://www.schurter.com/Stock-Check/Stock-Check-SCHURTER>

---

**Packaging Unit**

100 Pcs

---