

Excellent Integrated System Limited

Stocking Distributor

Click to view price, real time Inventory, Delivery & Lifecycle Information:

[Schurter](#)
[EC11.0001.201](#)

For any questions, you can email us directly:

sales@integrated-circuit.com

IEC Appliance Inlet C20 with Line Switch, 2-pole

V-Lock



Snap-In Version or Screw-On Version
illuminated version

C20

70° C



Description

- Panel Mount:
Screw-on version from front or rear side, snap-in version from front side
- 2 Functions:
Appliance Inlet Protection class I, Line Switch 2-pole
- Quick connect terminals 6.3 x 0.8 mm

Approvals

- VDE Certificate Number: 40001031
- UL File Number: E96454

Characteristics

- All single elements are already wired
- Unwired versions available on request
- Line switch non-illuminated or illuminated
- Ideal for application with high transient loads
- Suitable for use in equipment according to IEC/UL 60950

Other versions on request

- Unwired versions
- Line switch with other rocker marking
- For protection class II
- Variant with notch for V-Lock mating Cordsets

References

Alternative: version with line filter [EC12](#)

Weblinks

[pdf-datasheet](#), [html-datasheet](#), [General Product Information](#), [RoHS](#), [CHINA-RoHS](#), [REACH](#), [Distributor-Stock-Check](#), [Accessories](#), [Detailed request for product](#)

Newly available variants corresponding to V-Lock mating cordset. The connector is equipped with a notch intended for use with the latching cordset. The cord latching system prevents against accidental removal of the cordset.

Technical Data

Ratings IEC	16A / 250VAC; 50Hz
Ratings UL/CSA	20A / 250VAC; 60Hz
Dielectric Strength	> 2.5 kVAC between L-N > 3 kVAC between L/N-PE (1 min/50 Hz)
Allowable Operation Temp.	-25 °C to 70 °C
Degree of Protection	from front side IP 40 acc. to IEC 60529
Protection Class	Suitable for appliances with protection class I acc. to IEC 61140
Terminal	Quick connect terminals 6.3 x 0.8 mm
Panel Thickness s	Screw: max 8 mm Mounting screw torque max 0.5 Nm Snap-in: 1.5/2/2.5 mm
Material: Housing	Thermoplastic, black, UL 94V-0

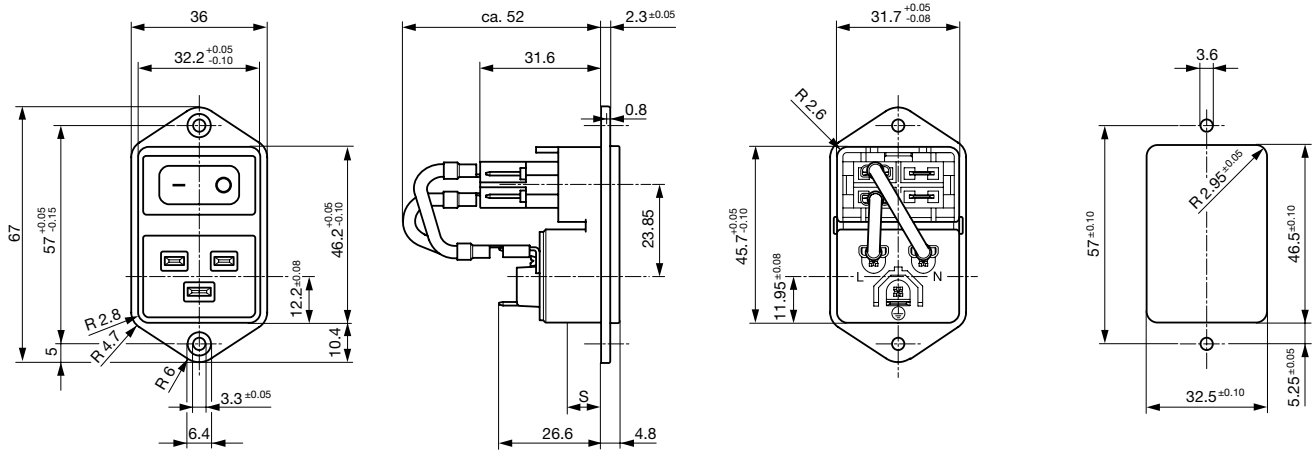
Appliance Inlet	C20 acc. to IEC 60320-1, UL 498, CSA C22.2 no. 42 (for cold conditions) pin-temperature 70 °C, 16A, Protection Class I
Line Switch	Rocker switch 2-pole, non-illuminated or illuminated, acc. to IEC 61058-1 Technical Details

EC11

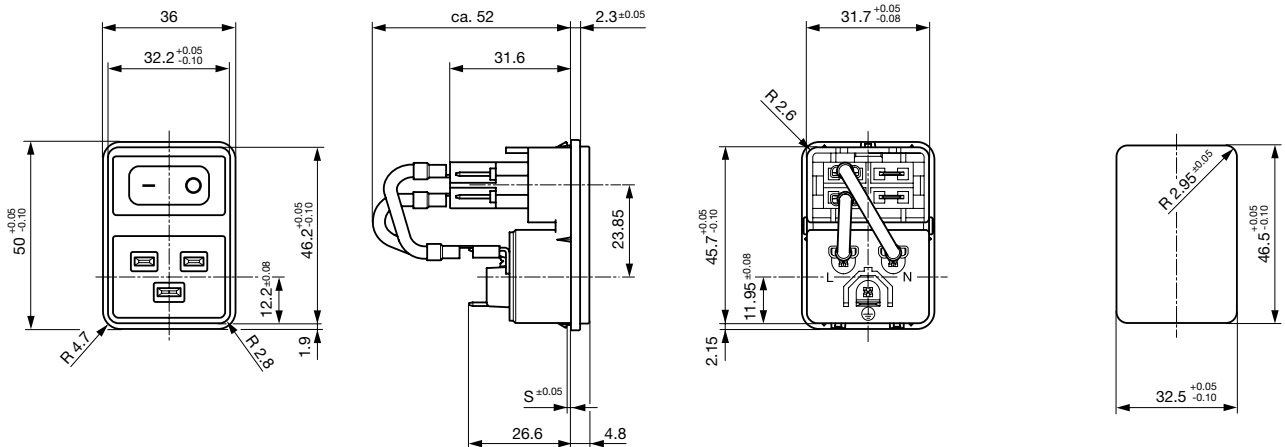
Power entry modules without line filter
www.schurter.com/PG05

Dimensions

Screw-on mounting

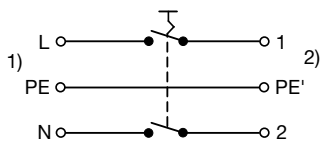


Snap-in mounting



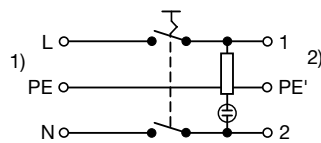
Diagrams

Line switch non-illuminated



- 1) Line
2) Load

Line switch illuminated



- 1) Line
2) Load

All Variants

Panel mounting	Panel Thickness s [mm]	Illumination	Color	Internally wired	Order Number
Snap-in	1.5	-	-	●	EC11.0001.201
Snap-in	1.5	-	-	●	EC11.0001.202
Snap-in	1.5	●	red	●	EC11.0021.201
Snap-in	1.5	●	red	●	EC11.0021.202
Snap-in	1.5	●	green	●	EC11.0031.201
Snap-in	1.5	●	green	●	EC11.0031.202
Snap-in	2	-	-	●	EC11.0001.301

Snap-in	2	-	●	EC11.0001.301.21
Snap-in	2	-	●	EC11.0001.302
Snap-in	2	●	red	EC11.0021.301
Snap-in	2	●	red	EC11.0021.302
Snap-in	2	●	green	EC11.0031.301
Snap-in	2	●	green	EC11.0031.302
Snap-in	2.5	-	●	EC11.0001.401
Snap-in	2.5	-	●	EC11.0001.402
Snap-in	2.5	●	red	EC11.0021.401
Snap-in	2.5	●	red	EC11.0021.402
Snap-in	2.5	●	green	EC11.0031.401
Snap-in	2.5	●	green	EC11.0031.402
Screw	-	-	●	EC11.0001.001.21
Screw	-	-	●	EC11.0001.002
Screw	-	●	red	EC11.0021.001
Screw	-	●	red	EC11.0021.002
Screw	-	●	green	EC11.0031.001
Screw	-	●	green	EC11.0031.002

Most Popular.

Availability for all products can be searched real-time: <http://www.schurter.com/Stock-Check/Stock-Check-SCHURTER>

Suffix "21" corresponds to the version with V-Lock mating cordset. The connector is equipped with a notch intended for use with the latching cordset. The cord latching system prevents against accidental removal of the cordset.

Packaging unit 25 Pcs

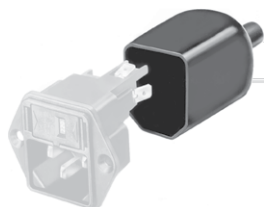
Accessories

Description



Wire Harness

Wire harness for SCHURTER products



Assorted Covers

Rear Cover

0859.0076



Cord retaining kits

Cord retaining strain relief

Flat head, Z

0888.0021

Flat head, H

4700.0008

EC11

Power entry modules without line filter
www.schurter.com/PG05

Mating Outlets/Connectors

Category / Description

[Connector Overview complete](#)

IEC Connector C19, Rewireable, Straight

4795

IEC Connector C19, Rewireable, Angled

4790

IEC Connector C19, Rewireable, Straight

0104U

[Connector further types to EC11](#)[Power Supply Cord Overview complete](#)

Cord Sets 10 A, North America, 3.0 m, Connector IEC C13, cord end:

4300.0920

Cord Sets 16 A, Europlug, 2.5 m, Connector IEC C19, cord end:

6004.0395

Cord Sets 16 A, North America, 2.5 m, Connector IEC C19, cord end:

6009.5195

[Power Supply Cord further types to EC11](#)

Mating Outlets/Connectors shuttered

[Power Cord Overview complete](#)

Overview Power Cord with IEC Appliance Connector C19, V-Lock, straight

VAC19KS

[Power Cord further types to EC11](#)