



Excellent Integrated System Limited

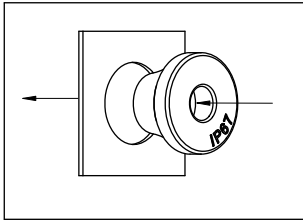
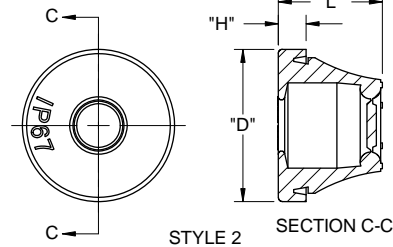
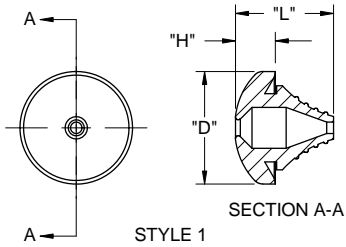
Stocking Distributor

Click to view price, real time Inventory, Delivery & Lifecycle Information:

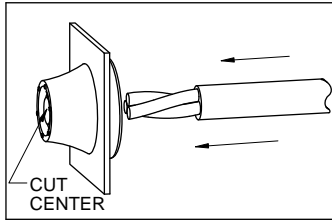
[Essentra Components \(formerly Richco, Inc.\)](#)
[LTG-199017](#)

For any questions, you can email us directly:
sales@integrated-circuit.com

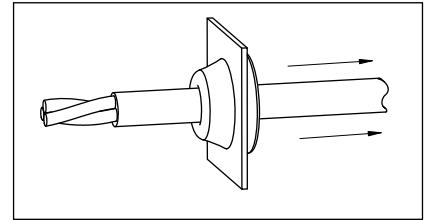
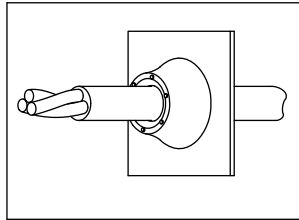
PART NUMBER	STYLE	COLOR	PANEL HOLE SIZE	PANEL THICKNESS	CABLE SIZE	DIMENSION "D" REF.	DIMENSION "L" REF.	DIMENSION "H" REF.		
LTG-199017	1	BLACK	12.5±0.25 [.49±.01]	0.5-2 [.02-.08]	3-5 [.12-.20]	20 [.79]	17.5 [.69]	7.1 [.28]		
LTG-1			12.7±0.2 [.500±.008]				12.8 [.50]	6.8 [.27]		
LTG-39897	2	GREY	16±0.25 [.63±.01]	1-4 [.04-.16]	5-7 [.20-.28]	21 [.83]	18.5 [.73]	6.2 [.24]		
LTG-34715			19±0.25 [.75±.01]				7-10 [.28-.39]	24 [.94]	19 [.75]	6 [.24]
LTG-34716			23±0.25 [.91±.01]				10-14 [.39-.55]	28 [1.10]	22.2 [.87]	6.1 [.24]
LTG-43021			29±0.25 [1.14±.01]				14-20 [.55-.79]	33.8 [1.33]	24.4 [.96]	6.1 [.24]
LTG-2			38±0.25 [1.50±.01]				20-24 [.79-.94]	46 [1.81]	29 [1.14]	6.5 [.26]
LTG-3			48±0.25 [1.89±.01]				25-32 [.98-1.26]	57.5 [2.26]	32 [1.26]	8 [.31]



PRESS GROMMET INTO PANEL



CUT CENTER AS SHOWN AND INSERT CABLE THROUGH GROMMET



PULL BACK CABLE TO FORM SEAL

NOTES:

1. MATERIAL: EPDM RUBBER, 50 SHORE A (RMS-153).
2. PARTS CONFORM TO IP67 STANDARD.
3. ALTERNATE UNITS FOR REFERENCE ONLY.
4. GREY PARTS AVAILABLE IN COLOR BLACK BY SPECIAL ORDER. TO ORDER ADD "BK" TO END OF PART NO.

K	SEE CO 200431 FOR CHANGES	SK	09/08/09
-	SEE ENGINEERING FOR REVISIONS A-J	--	-----
REV	DESCRIPTION	ENGR.	DATE

TITLE: LIQUID TIGHT GROMMETS				DWG IN mm [IN]		FINAL	
CREATED USING SOLIDWORKS	FILE #: LTG	DWN: R.D.G.	APP: RDG	PART #			
TOLERANCES UNLESS NOTED XX±.010 XXX±.005 FRAC±.1/64 ANG±1°	SHEET: 1 OF 1	SHEET SIZE: A	DT: 06/30/03	CHKD: SJ	SEE TABLE		PRINT TYPE
RE: RICHCO, INC.		RICHCO, INC. ENG@RICHCO-INC.COM (773) 539-4060				CA	