

Excellent Integrated System Limited

Stocking Distributor

Click to view price, real time Inventory, Delivery & Lifecycle Information:

[TE Connectivity AMP Connectors](#)
[223014-1](#)

For any questions, you can email us directly:

sales@integrated-circuit.com

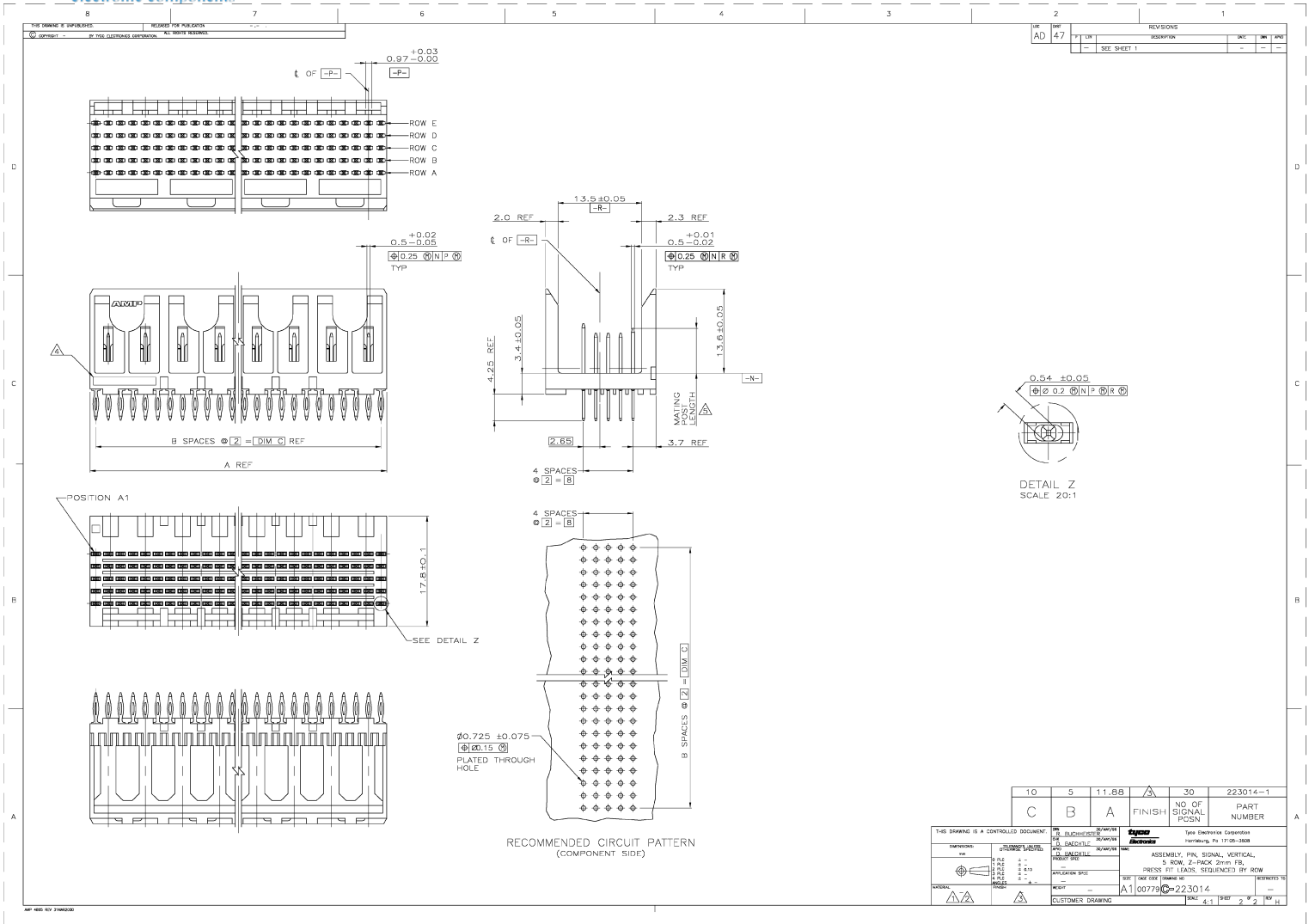
<p>THIS DRAWING IS UNCLASSIFIED UNLESS INDICATED OTHERWISE</p> <p>© 2014 AMP CONN. ALL RIGHTS RESERVED.</p>	<p>REV. 47</p> <p>REV. PER. EC 0512-0414-03</p>	<p>REVISIONS</p> <table border="1" style="width: 100%; border-collapse: collapse;"> <tr> <th>REV.</th> <th>DATE</th> <th>DESCRIPTION</th> <th>BY</th> <th>CHK.</th> <th>APP.</th> </tr> <tr> <td>1</td> <td></td> <td></td> <td></td> <td></td> <td></td> </tr> </table> <p> △ HOUSING MATERIAL: LIQUID CRYSTAL POLYMER COLOR: NATURAL △ CONTACT MATERIAL: PHOSPHOR BRONZE △ CONTACT FINISH: UNDERPLATE (ENTIRE CONTACT): 0.00127 MIN NICKEL ON MATING SURFACES: CONFORMS TO ALL TESTING SPECIFIED FOR TELCORDIA UNCONTROLLED ENVIRONMENT. ON LEADS 0.0008 MIN TIN-LEAD OVER UNDERPLATE. LUBRICATION (ENTIRE CONTACT): SURFACE CONDITIONER PER AMP SPEC 112-1002 AFTER PLATING. △ PART MARKING LOCATED APPROXIMATELY AS SHOWN. △ DIMENSION APPLIES WHEN SEATED ON PRINTED CIRCUIT BOARD. </p>	REV.	DATE	DESCRIPTION	BY	CHK.	APP.	1					
REV.	DATE	DESCRIPTION	BY	CHK.	APP.									
1														

ROW	E	N	N	N	N	N
D	J	J	J	J	J	J
C	J	J	J	J	J	J
B	J	J	J	J	J	J
A	T	T	T	T	T	T

CODE LETTER	△ MATING POST LENGTH (IO-10)	LEAD LENGTH (REF)
J	6.5	4.25
N	7.25	4.25
T	8.0	4.25

ROW	1	2	3	4	5	6
SIGNAL POSITION						

<p>THIS DRAWING IS A CONTROLLED DOCUMENT.</p> <p>REV. 47</p> <p>REV. PER. EC 0512-0414-03</p>	<p>FINISH</p> <p>NO. OF SIGNAL POSN</p> <p>PART NUMBER</p>	<p>223014-1</p> <p>ASSEMBLY: PIN, SIGNAL, VERTICAL, 5 ROW, Z-PACK 2mm FB, PRESS FIT LEADS, SEQUENCED BY ROW</p> <p>REV. 47</p> <p>DATE: 05/12/04</p> <p>BY: EC</p> <p>CHK: EC</p> <p>APP: EC</p> <p>SCALE: 1:1</p> <p>PROJ: 00779</p> <p>REV: 47</p> <p>CUSTOMER DRAWING</p>
---	--	--



REV	DESCRIPTION	DATE	BY	CHK
AD 47	SEE SHEET 1	-	-	-

DETAIL Z
SCALE 20:1

RECOMMENDED CIRCUIT PATTERN
(COMPONENT SIDE)

10	5	11.68	30	223014-1
C	B	A	FINISH	PART NUMBER
<p>THIS DRAWING IS A CONTROLLED DOCUMENT. TE CONNECTIVITY is a registered trademark of TE Connectivity Corporation. AMP is a registered trademark of TE Connectivity Corporation. AMP is a registered trademark of TE Connectivity Corporation. AMP is a registered trademark of TE Connectivity Corporation.</p> <p>ASSEMBLY: PIN, SIGNAL, VERTICAL, 5 ROW, Z-PACK 2mm FB, PRESS FIT LEADS, SEQUENCED BY ROW</p> <p>REV: A1 00779 © 223014</p> <p>CUSTOMER DRAWING</p>				