

Excellent Integrated System Limited

Stocking Distributor

Click to view price, real time Inventory, Delivery & Lifecycle Information:

[EPCOS \(TDK\)](#)
[B39242B7809A510](#)

For any questions, you can email us directly:

sales@integrated-circuit.com



SAW Components

Data Sheet B7809

Data Sheet

A large, stylized graphic of the EPCOS logo is superimposed on a grayscale globe. The globe shows a map of the world with a grid of latitude and longitude lines. The EPCOS logo is rendered in a light, glowing white color, appearing to be part of the globe's surface.



SAW Components	B7809
Low-Loss Filter for Mobile Communication	2441,75 MHz
Data Sheet	

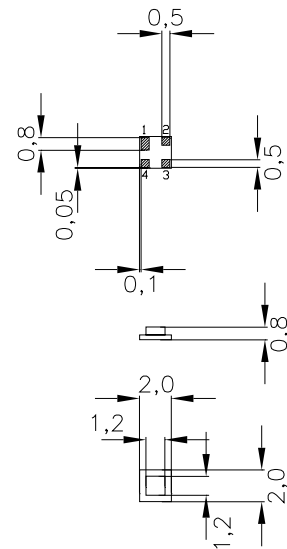
Chip sized SAW package

Features

- Low-loss RF filter for Bluetooth
- Low amplitude ripple
- Usable passband 83,5 MHz
- No matching network required for operation at 50 Ω
- Ceramic package for Surface Mounted Technology (SMT)

Terminals

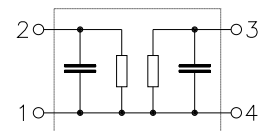
- Gold-plated Ni



Dimensions in mm, approx. weight 0,01 g

Pin configuration

- 2 Input
- 3 Output
- 1, 4 Ground



Type	Ordering code	Marking and Package according to	Packing according to
B7809	B39242-B7809-A510	C61157-A7-A63	F61074-V8099-Z000

Electrostatic Sensitive Device (ESD)

Maximum ratings

Operating temperature range	T	- 40/+ 85	°C	source impedance 50 Ω, 2400,0 ... 2483,5 MHz
Storage temperature range	T_{stg}	- 40/+ 85	°C	
DC voltage	V_{DC}	0	V	
Input Power max.	P_{IN}	15,0	dBm	



SAW Components	B7809
Low-Loss Filter for Mobile Communication	2441,75 MHz

Data Sheet



Characteristics

Operating Temperature Range: $T = -40^{\circ}\text{C}$ to 85°C
 Terminating source impedance: $Z_S = 50\Omega$
 Terminating load impedance: $Z_L = 50\Omega$

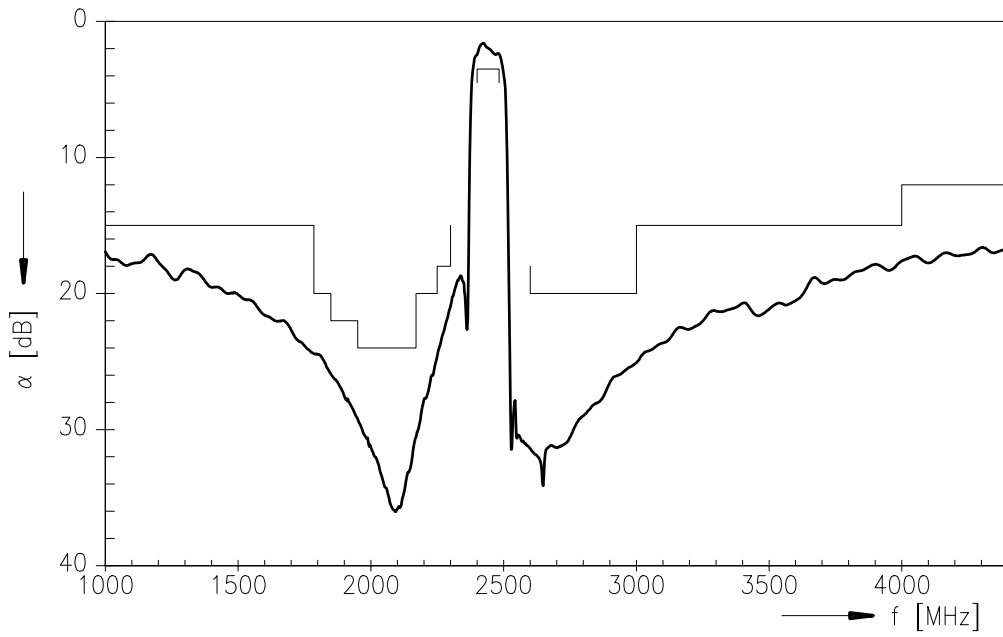
		min.	typ.	max.	
Center frequency	f_C	—	2441,75	—	MHz
Maximum insertion attenuation	α_{\max}	—	2,6	3,5	dB
2400,0 ... 2483,5 MHz					
Amplitude ripple	$\Delta\alpha$	—	1,2	2,2	dB
2400,0 ... 2483,5 MHz		—	1,2	2,0	dB
2400,0 ... 2483,5 MHz *)					
Attenuation	α				
0,00 ... 1785,00 MHz		15	17	—	dB
1785,00 ... 1850,00 MHz		20	24	—	dB
1850,00 ... 1950,00 MHz		22	26	—	dB
1950,00 ... 2170,00 MHz		24	29	—	dB
2170,00 ... 2250,00 MHz		20	24	—	dB
2250,00 ... 2300,00 MHz		18	20	—	dB
2600,00 ... 3000,00 MHz		20	25	—	dB
3000,00 ... 4000,00 MHz		15	18	—	dB
4000,00 ... 5000,00 MHz		12	15	—	dB

*) $T = -30^{\circ}\text{C}$ to 85°C

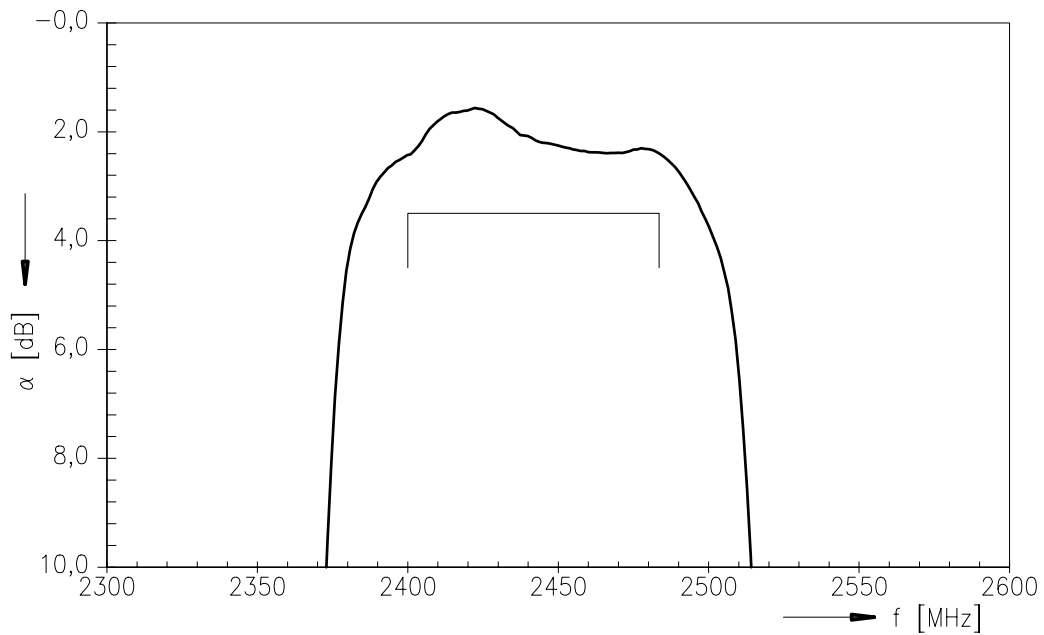


SAW Components	B7809
Low-Loss Filter for Mobile Communication	2441,75 MHz
Data Sheet	SMD

Transfer function



Transfer function (passband)





SAW Components	B7809
Low-Loss Filter for Mobile Communication	2441,75 MHz
Data Sheet	

Published by EPCOS AG

SAW MC WT, P.O. Box 80 17 09, 81617 Munich, GERMANY

TEL +49 89 636 09, FAX +49 89 636-2 26 89

© EPCOS AG 2002. Reproduction, publication and dissemination of this brochure and the information contained therein without EPCOS' prior express consent is prohibited.

Purchase orders are subject to the General Conditions for the Supply of Products and Services of the Electrical and Electronics Industry recommended by the ZVEI (German Electrical and Electronic Manufacturers' Association), unless otherwise agreed.

This brochure replaces the previous edition.

For questions on technology, prices and delivery please contact the Sales Offices of EPCOS AG or the international Representatives.

Due to technical requirements components may contain dangerous substances. For information on the type in question please also contact one of our Sales Offices.