

## Excellent Integrated System Limited

Stocking Distributor

Click to view price, real time Inventory, Delivery & Lifecycle Information:

[EPCOS \(TDK\)](#)  
[B39301R2707U310](#)

For any questions, you can email us directly:

[sales@integrated-circuit.com](mailto:sales@integrated-circuit.com)



# SAW Components

Data Sheet R 2707

Data Sheet

EPCOS



## SAW Components

R 2707

## Resonator

303,825 MHz

## Data Sheet

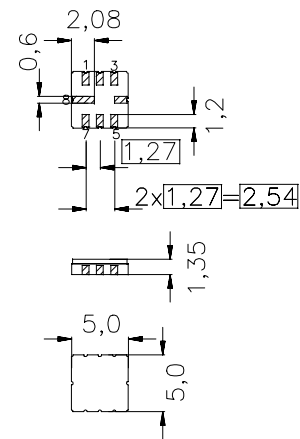
SMD Ceramic package **QCC8C**

### Features

- 2-port resonator
- nominal 180°-phase at resonance
- Provides reliable, fundamental mode, quartz frequency stabilization i.e. in transmitters or local oscillators

### Terminals

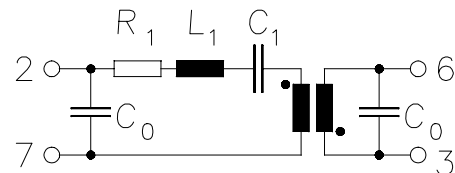
- Ni, gold plated



Dimensions in mm, approx. weight 0,1 g

### Pin configuration

2	Input / Output
6	Output / Input
7	Ground (Input / Output)
3	Ground (Output / Input)
4,8	Ground (case)



Type	Ordering code	Marking and Package according to	Packing according to
R2707	B39301-R2707-U310	C61157-A7-A56	F61074-V8070-Z000

Electrostatic Sensitive Device (ESD)

### Maximum ratings

Operable temperature range	$T_A$	-45/+85	°C	between any terminals
Storage temperature range	$T_{stg}$	-45/+85	°C	
DC voltage	$V_{DC}$	12	V	
Source power	$P_s$	0	dBm	



SAW Components	R 2707
Resonator	303,825 MHz

## Data Sheet

### Characteristics

Reference temperature:  $T_A = 25\text{ °C}$   
 Terminating Source impedance:  $Z_S = 50\ \Omega$   
 Terminating Load impedance:  $Z_L = 50\ \Omega$

		min.	typ.	max.	
<b>Center frequency</b> (center frequency between 3 dB points)	$f_c$	303,750	303,825	303,900	MHz
<b>Minimum insertion attenuation</b>	$\alpha_{\min}$	—	8,5	10	dB
Phase at $f_c$	$\varphi$	—	150	—	° el.
Loaded quality factor	$Q_L$	4000	6700	—	
Unloaded quality factor	$Q_U$	6500	10000	—	
<b>Ageing of <math>f_c</math></b>		—	—	±50	ppm
<b>Equivalent circuit elements</b>					
Motional capacitance	$C_1$	—	0,307	—	fF
Motional inductance	$L_1$	—	894	—	μH
Motional resistance	$R_1$	—	160	—	Ω
Input / Output capacitance	$C_0$	—	2,4	—	pF
<b>Temperature coefficient of frequency <sup>1)</sup></b>	$TC_f$	—	-0,03	—	ppm/K <sup>2</sup>
Turnover temperature	$T_0$	10	—	40	°C

<sup>1)</sup> Temperature dependence of  $f_c$ :  $f_c(T_A) = f_c(T_0)(1 + TC_f(T_A - T_0)^2)$



<b>SAW Components</b>	<b>R 2707</b>
<b>Resonator</b>	<b>303,825 MHz</b>
<b>Data Sheet</b>	

**Published by EPCOS AG**  
**Surface Acoustic Wave Components Division, SAW CE AE PD**  
**P.O. Box 80 17 09, D-81617 München**

© EPCOS AG 2001. All Rights Reserved.

As far as patents or other rights of third parties are concerned, liability is only assumed for components per se, not for applications, processes and circuits implemented within components or assemblies.

The information describes the type of component and shall not be considered as assured characteristics.

Terms of delivery and rights to change design reserved.

For questions on technology, prices and delivery please contact the sales offices of EPCOS AG or the international representatives.

Due to technical requirements components may contain dangerous substances. For information on the type in question please also contact one of our sales offices.