

Excellent Integrated System Limited

Stocking Distributor

Click to view price, real time Inventory, Delivery & Lifecycle Information:

[EPCOS \(TDK\)](#)
[B39321B3576U310](#)

For any questions, you can email us directly:

sales@integrated-circuit.com



SAW Components

Data Sheet B3576

Data Sheet

A large, stylized graphic of the EPCOS logo is superimposed on a globe. The globe is rendered in a dark, semi-transparent style, showing the outlines of continents. The EPCOS logo, including the stylized triangle and the word "EPCOS", is shown in a light, glowing white color, appearing to be part of the globe's surface.



SAW Components

B3576

Low Loss Filter

315,00 MHz

Data Sheet

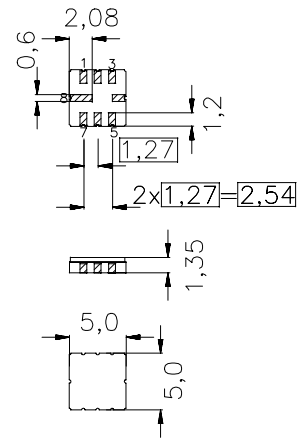
Features

- RF low-loss filter for remote control receivers
- Package for **S**urface **M**ounted **T**echnology (**SMT**)
- Balanced and unbalanced operation possible

Terminals

- Ni, gold plated

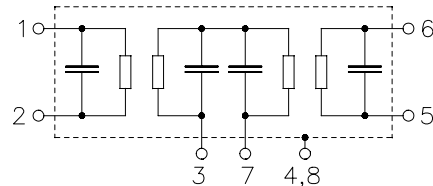
Ceramic package **QCC8C**



typ. dimensions in mm, approx. weight 0,1 g

Pin configuration

- 1 Input
- 2 Input Ground or balanced input
- 5 Output
- 6 Output Ground or balanced output
- 7 External coupling coil
- 4,8 Case-Ground
- 3 to be grounded



Type	Ordering code	Marking and package according too	Packing according to
B3576	B39321-B3576-U310	C61157-A7-A56	F61074-V8070-Z000

Electrostatic Sensitive Device (ESD)

Maximum ratings

Operable temperature range	T_A	- 45/+ 95	°C
Storage temperature range	T_{stg}	- 45/+ 95	°C
DC voltage	V_{DC}	0	V
Source power	P_S	10	dBm



SAW Components	B3576
Low Loss Filter	315,00 MHz

Data Sheet

Characteristics

Reference temperature: $T_A = -45 \dots 95 \text{ }^\circ\text{C}$
 Terminating source impedance: $Z_S = 50 \text{ } \Omega$ and matching network
 Terminating load impedance: $Z_L = 50 \text{ } \Omega$ and matching network

		min.	typ.	max.	
Center frequency (center frequency between 3 dB points)	f_C	—	315,00	—	MHz
Minimum insertion attenuation 314,90 ... 315,10 MHz (including loss in matching coils)	α_{\min}	—	3,3	4,8	dB
Amplitude ripple (p-p) 314,92 ... 315,08 MHz		—	0,7	2,0	dB
314,90 ... 315,10 MHz		—	1,0	3,0	dB
Relative attenuation (relative to α_{\min})	α_{rel}				
10,00 ... 230,00 MHz		65	70	—	dB
230,00 ... 290,00 MHz		40	45	—	dB
290,00 ... 310,00 MHz		50	55	—	dB
310,00 ... 314,10 MHz		42	47	—	dB
315,90 ... 317,00 MHz		21	26	—	dB
317,00 ... 322,00 MHz		38	43	—	dB
322,00 ... 1000,00 MHz		55	60	—	dB
Impedance for pass band matching ²⁾ Input: $Z_{\text{IN}} = R_{\text{IN}} \parallel C_{\text{IN}}$ Output: $Z_{\text{OUT}} = R_{\text{OUT}} \parallel C_{\text{OUT}}$		—	470 \parallel 2,0	—	$\Omega \parallel \text{pF}$
		—	470 \parallel 2,0	—	$\Omega \parallel \text{pF}$
Temperature coefficient of frequency ¹⁾	TC_f	—	-0,03	—	ppm/K ²
Frequency inversion point	T_0	10	—	40	$^\circ\text{C}$

¹⁾Temperature dependance of f_C : $f_C(T_A) = f_C(T_0) (1 + TC_f(T_A - T_0)^2)$

²⁾ Impedance for passband matching bases on an ideal, perfect matching of the SAW filter to source- and to load impedance (here 50 Ohm). After the SAW filter is removed and input impedance into the input matching / output matching network is calculated.

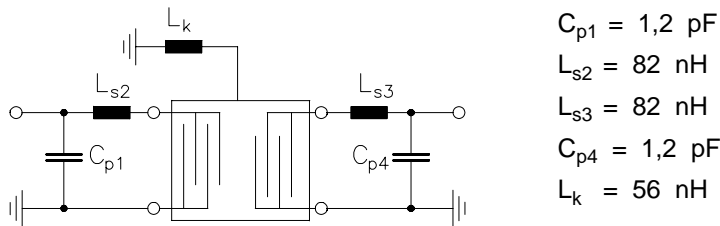
The conjugate complex value of these characteristic impedances are the input and output impedances for flat passband. For more details, we refer to EPCOS application note #4.



SAW Components	B3576
Low Loss Filter	315,00 MHz

Data Sheet

Matching network to 50 Ω (element values depend on pcb layout and equivalent circuit)



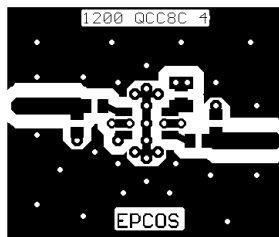
Minimising the crosstalk

For a good ultimate rejection a low crosstalk is necessary. Low crosstalk can be realised with a good RF layout. The major crosstalk mechanism is caused by the “ground-loop” problem.

Grounding loops are created if input-and output transducer GND are connected on the top-side of the PCB and fed to the system grounding plane by a common via hole. To avoid the common ground path, the ground pin of the input- and output transducer are fed to the system ground plane (bottom PCB plane) by their own via hole. The transducers’ grounding pins should be isolated from the upper grounding plane.

A common GND inductivity of 0.5nH degrades the ultimate rejection (crosstalk) by 20dB.

The optimised PCB layout, including matching network for transformation to 50 Ohm, is shown here. In this PCB layout the grounding loops are minimised to realise good ultimate rejection.



Optimised PCB layout for SAW filters in QCC8C package, pinning 1,5 (top side, scale 1:1)

The bottom side is a copper plane (system ground area). The input and output grounding pins are isolated and connected to the common ground by separated via holes.

For good contact of the upper grounding area with the lower side it is necessary to place enough via holes.



SAW Components

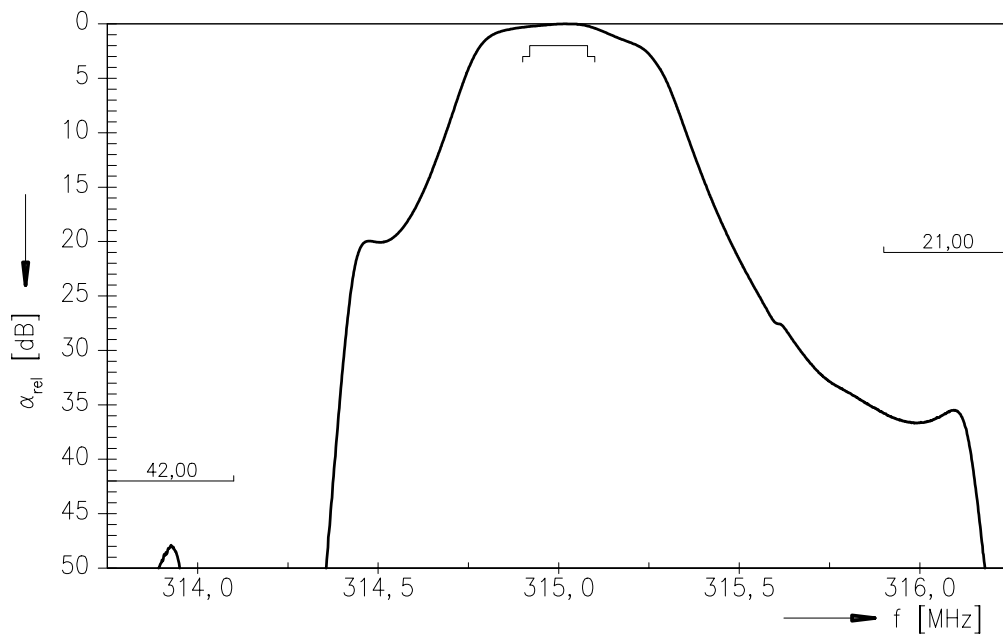
B3576

Low Loss Filter

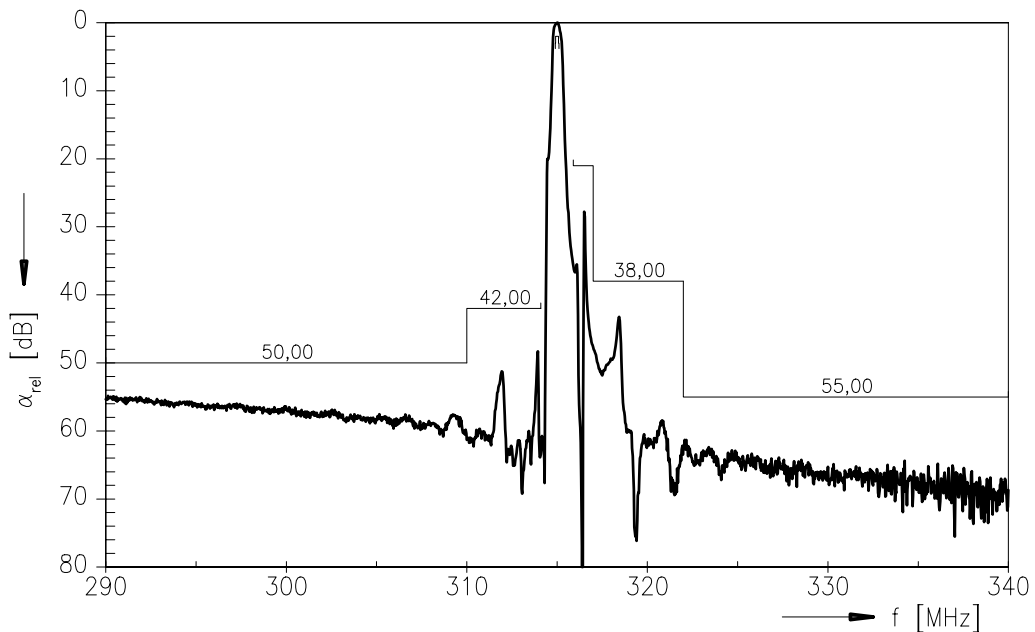
315,00 MHz

Data Sheet

Normalized frequency response



Normalized frequency response (wideband)





SAW Components	B3576
Low Loss Filter	315,00 MHz

Data Sheet

Published by EPCOS AG
Surface Acoustic Wave Components Division, SAW CE AE PD
P.O. Box 80 17 09, D-81617 München

© EPCOS AG 2001. All Rights Reserved.

As far as patents or other rights of third parties are concerned, liability is only assumed for components per se, not for applications, processes and circuits implemented within components or assemblies.

The information describes the type of component and shall not be considered as assured characteristics.

Terms of delivery and rights to change design reserved.

For questions on technology, prices and delivery please contact the sales offices of EPCOS AG or the international representatives.

Due to technical requirements components may contain dangerous substances. For information on the type in question please also contact one of our sales offices.