

## Excellent Integrated System Limited

Stocking Distributor

Click to view price, real time Inventory, Delivery & Lifecycle Information:

[EPCOS \(TDK\)](#)  
[B39431R800H210W3](#)

For any questions, you can email us directly:

[sales@integrated-circuit.com](mailto:sales@integrated-circuit.com)



# SAW Components

Data Sheet R 800

Data Sheet

A large, stylized graphic of the EPCOS logo is overlaid on a grayscale globe. The globe shows the outlines of continents and is set against a dark background. The EPCOS logo is rendered in a light, glowing white color, appearing to be part of the globe's surface.



<b>SAW Components</b>	<b>R 800</b>
<b>Resonator</b>	<b>433,92 MHz</b>

Data Sheet

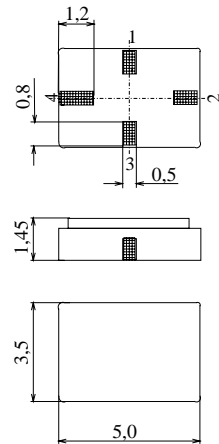
Ceramic package **QCC4A**

**Features**

- 1-port resonator
- Provides reliable, fundamental mode, quartz frequency stabilization i.e. in transmitters or local oscillators

**Terminals**

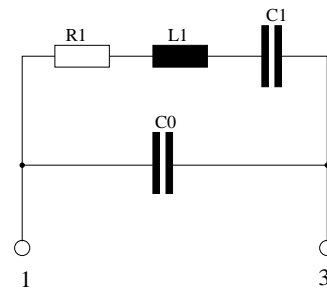
- Ni, gold plated



Dimensions in mm, approx. weight 0,1 g

**Pin configuration**

- 1 Input
- 3 Output, grounded in 1-port conf.
- 2,4 Ground (case)



Type	Ordering code	Marking and Package according to	Packing according to
R 800	B39431-R 800-H210	C61157-A7-A86	F61074-V8120-Z000

Electrostatic Sensitive Device (ESD)

**Maximum ratings**

Operable temperature range	$T_A$	-45/+125	°C	between any terminals
Storage temperature range	$T_{stg}$	-45/+125	°C	
DC voltage	$V_{DC}$	12	V	
Source power	$P_s$	0	dBm	



<b>SAW Components</b>	<b>R 800</b>
<b>Resonator</b>	<b>433,92 MHz</b>

Data Sheet

Characteristics

Reference temperature:  $T_A = 25\text{ °C}$   
 Terminating source impedance:  $Z_S = 50\ \Omega$   
 Terminating load impedance:  $Z_L = 50\ \Omega$

		min.	typ.	max.	
<b>Center frequency</b> <sup>1)</sup>	$f_c$	433,845	433,92	433,995	MHz
<b>Minimum insertion attenuation</b>	$\alpha_{\min}$	—	1,2	1,7	dB
Unloaded quality factor	$Q_U$	8300	13500	—	
<b>Ageing of <math>f_c</math></b>		—	—	-10/+50	ppm
<b>Equivalent circuit elements</b>					
Motional capacitance	$C_1$	—	1,79	—	fF
Motional inductance	$L_1$	—	75,15	—	$\mu\text{H}$
Motional resistance	$R_1$	—	15	23	$\Omega$
Parallel capacitance <sup>2)</sup>	$C_0$	—	2,7	—	pF
<b>Temperature coefficient of frequency</b> <sup>3)</sup>	$TC_f$	—	-0,032	—	ppm/K <sup>2</sup>
<b>Turnover temperature</b>	$T_0$	5	—	25	$^{\circ}\text{C}$

<sup>1)</sup> Center frequency is defined as maximum of the real part of the admittance

<sup>2)</sup> If used in two port configuration (pin 1-input, pin 3-output)  $C_0$  is reduced by approx. 0,3 pF.

<sup>3)</sup> Temperature dependence of  $f_c$ :  $f_c(T_A) = f_c(T_0)(1 + TC_f(T_A - T_0)^2)$



<b>SAW Components</b>	<b>R 800</b>
<b>Resonator</b>	<b>433,92 MHz</b>

Data Sheet

**Published by EPCOS AG**  
**Surface Acoustic Wave Components Division, SAW CE AE PD**  
**P.O. Box 80 17 09, D-81617 München**

© EPCOS AG 2001. All Rights Reserved.

As far as patents or other rights of third parties are concerned, liability is only assumed for components per se, not for applications, processes and circuits implemented within components or assemblies.

The information describes the type of component and shall not be considered as assured characteristics.

Terms of delivery and rights to change design reserved.

For questions on technology, prices and delivery please contact the sales offices of EPCOS AG or the international representatives.

Due to technical requirements components may contain dangerous substances. For information on the type in question please also contact one of our sales offices.