

Excellent Integrated System Limited

Stocking Distributor

Click to view price, real time Inventory, Delivery & Lifecycle Information:

[EPCOS \(TDK\)](#)
[B39588N3958M100](#)

For any questions, you can email us directly:

sales@integrated-circuit.com



SAW Components

Data Sheet N 3958 M

Data Sheet

A large, stylized graphic of the EPCOS logo is superimposed on a grayscale image of a globe. The logo is rendered in a light, glowing white color, and the globe shows a map of the world.



SAW Components

N 3958 M

IF Filter for Video Applications

58,75 MHz

Data Sheet

Standard

Plastic package **SIP5K**

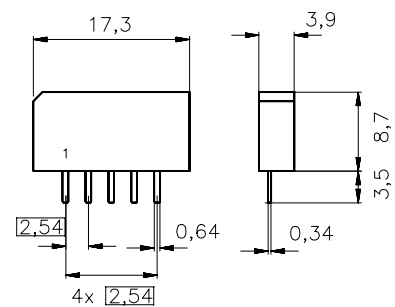
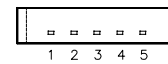
- M

Features

- TV IF filter with Nyquist slope and sound suppression
- Constant group delay

Terminals

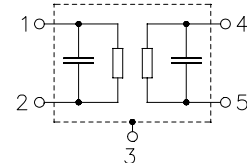
- Tinned CuFe alloy



Dimensions in mm, approx. weight 1,0 g

Pin configuration

- 1 Input
- 2 Input - ground
- 3 Chip carrier - ground
- 4 Output
- 5 Output



Type	Ordering code	Marking and package according to	Packing according to
N 3958 M	B39588-N3958-M100	C61157-A1-A15	F61074-V8067-Z000

Maximum ratings

Operable temperature range	T_A	-25/+65	°C	
Storage temperature range	T_{stg}	-40/+85	°C	
DC voltage	V_{DC}	12	V	between any terminals
AC voltage	V_{pp}	10	V	between any terminals



SAW Components	N 3958 M
IF Filter for Video Applications	58,75 MHz

Data Sheet

Characteristics

Reference temperature: $T_A = 25 (45) \text{ }^\circ\text{C}$
 Terminating source impedance: $Z_S = 50 \text{ } \Omega$
 Terminating load impedance: $Z_L = 2 \text{ k}\Omega \parallel 3 \text{ pF}$

		min.	typ.	max.	
Insertion attenuation	α				
Reference level for the following data	57,08 (57,00) MHz	11,3	12,8	14,3	dB
Relative attenuation	α_{rel}				
Picture carrier	58,83 (58,75) MHz	4,8	5,8	6,8	dB
Color carrier	55,25 (55,17) MHz	1,8	2,8	3,8	dB
Sound carrier	54,33 (54,25) MHz	30,0	40,0	—	dB
Adjacent picture carrier	52,83 (52,75) MHz	44,0	54,0	—	dB
Adjacent sound carrier	60,33 (60,25) MHz	40,0	48,0	—	dB
Lower sidelobe					
45,08 ... 52,83 (45,00 ... 52,75) MHz		40,0	46,0	—	dB
Upper sidelobe					
60,33 ... 65,08 (60,25 ... 65,00) MHz		36,0	42,0	—	dB
Reflected wave signal suppression					
1,1 μs ... 6,0 μs after main pulse (test pulse 250 ns, carrier frequency 57,08 (57,00) MHz)		42,0	48,0	—	dB
Feedthrough signal suppression					
1,2 μs ... 1,1 μs before main pulse (test pulse 250 ns, carrier frequency 57,08 (57,00) MHz)		50,0	56,0	—	dB
Group delay ripple (p-p)	$\Delta\tau$	—	60	—	ns
Impedance at 57,08 (57,00) MHz					
Input: $Z_{IN} = R_{IN} \parallel C_{IN}$		—	1,2 \parallel 8,9	—	k Ω \parallel pF
Output: $Z_{OUT} = R_{OUT} \parallel C_{OUT}$		—	0,8 \parallel 2,7	—	k Ω \parallel pF
Temperature coefficient of frequency	TC_f	—	-72	—	ppm/K



SAW Components

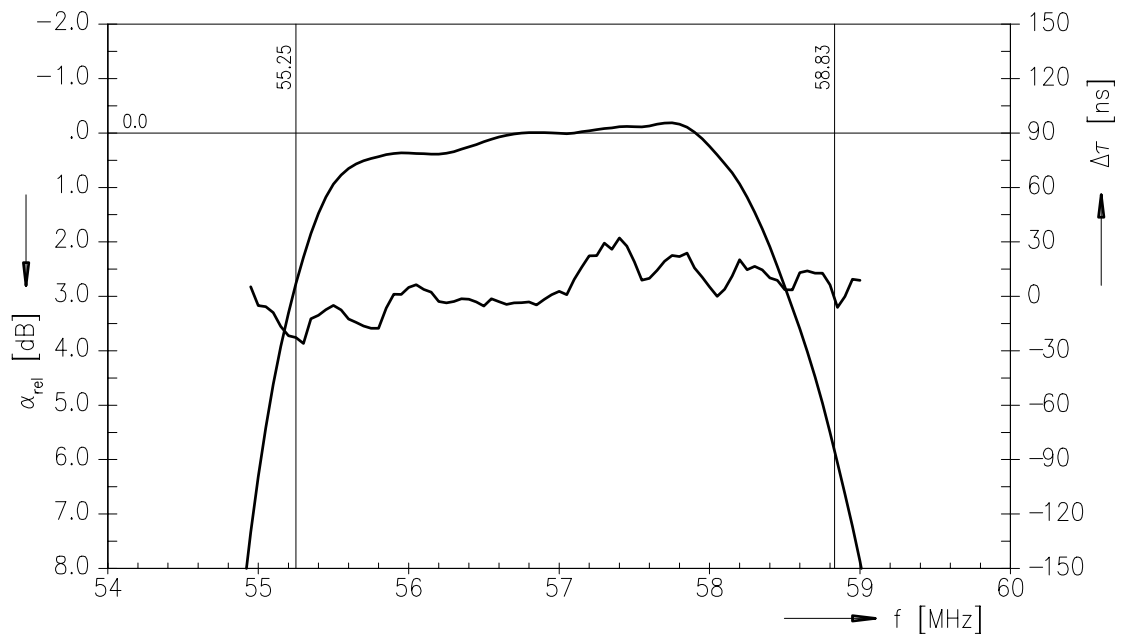
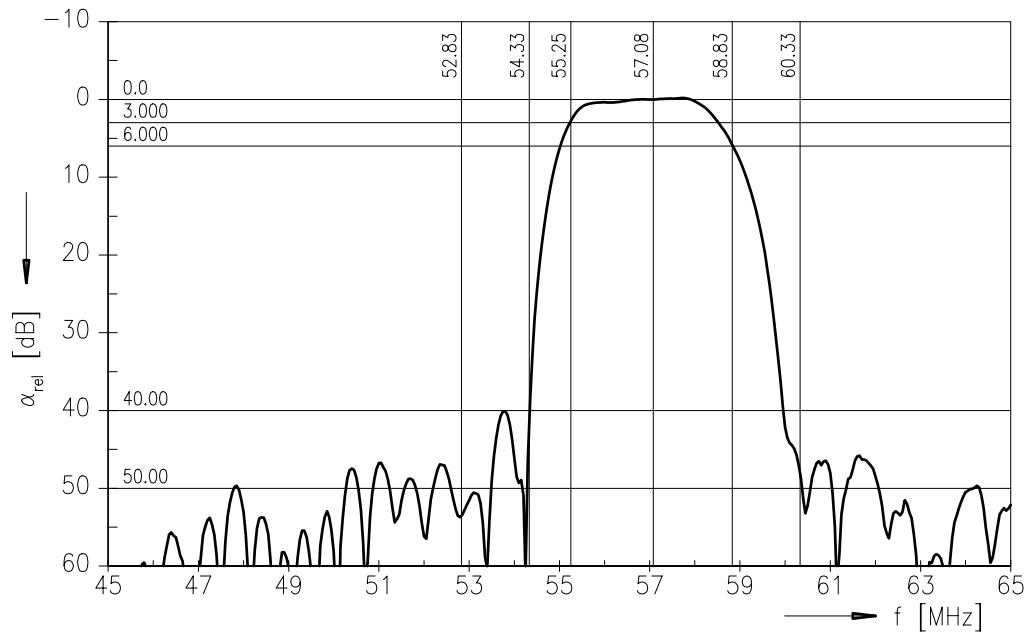
N 3958 M

IF Filter for Video Applications

58,75 MHz

Data Sheet

Frequency response





SAW Components

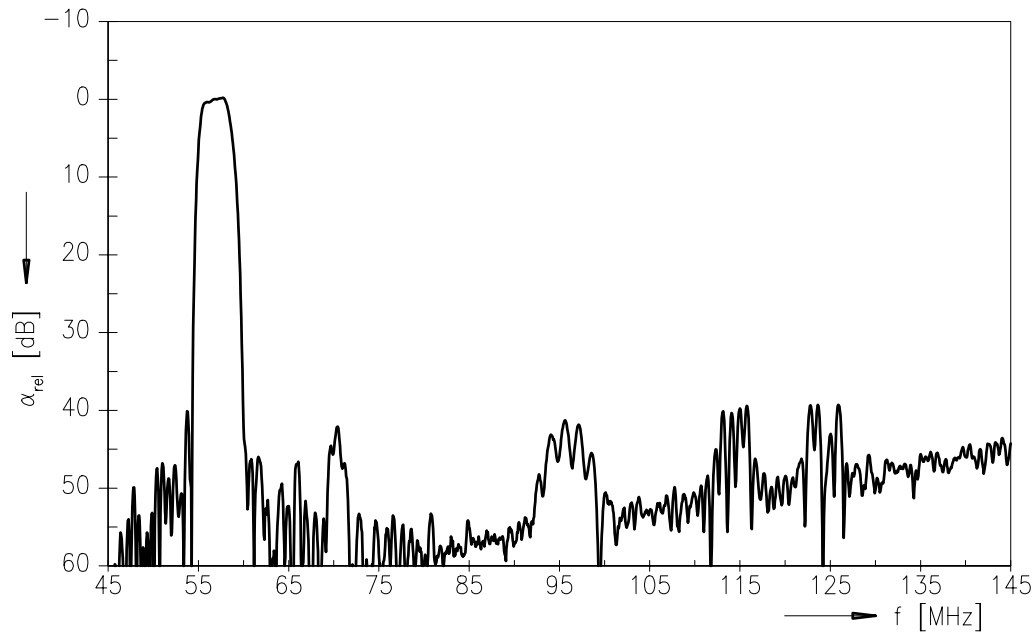
N 3958 M

IF Filter for Video Applications

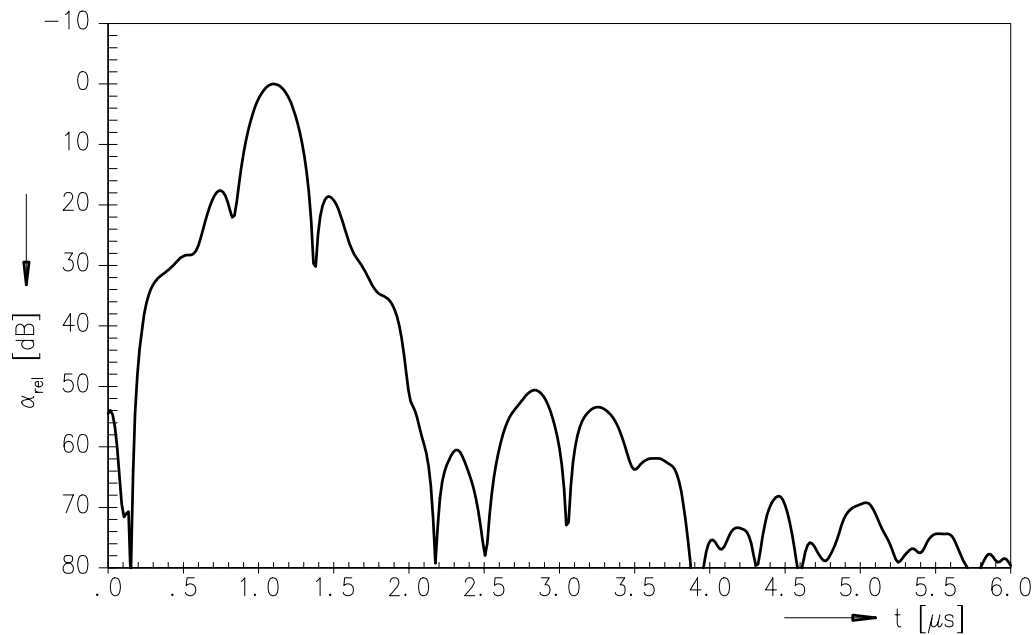
58,75 MHz

Data Sheet

Frequency response



Time domain response





SAW Components	N 3958 M
IF Filter for Video Applications	58,75 MHz

Data Sheet

Published by EPCOS AG
Surface Acoustic Wave Components Division, SAW CE MM PD
P.O. Box 80 17 09, D-81617 München

© EPCOS AG 2001. All Rights Reserved.

As far as patents or other rights of third parties are concerned, liability is only assumed for components per se, not for applications, processes and circuits implemented within components or assemblies.

The information describes the type of component and shall not be considered as assured characteristics.

Terms of delivery and rights to change design reserved.

For questions on technology, prices and delivery please contact the sales offices of EPCOS AG or the international representatives.

Due to technical requirements components may contain dangerous substances. For information on the type in question please also contact one of our sales offices.