

Excellent Integrated System Limited

Stocking Distributor

Click to view price, real time Inventory, Delivery & Lifecycle Information:

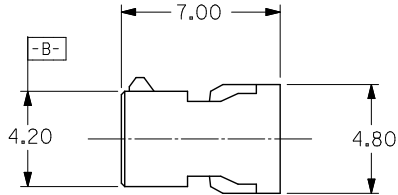
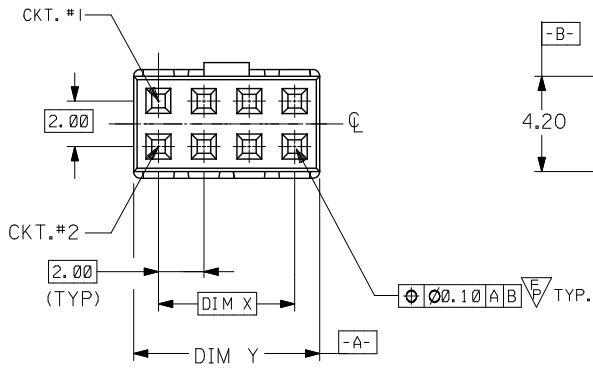
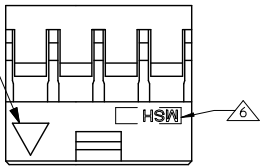
[Molex Connector Corporation](#)
[0511101260](#)

For any questions, you can email us directly:

sales@integrated-circuit.com

PART NUMBER	CKT SIZE	DIM X	DIM Y
51110-0460	4	2.00	4.20
51110-0660	6	4.00	6.20
51110-0860	8	6.00	8.20
51110-1060	10	8.00	10.20
51110-1260	12	10.00	12.20

IST CIRCUIT IDENTIFICATION

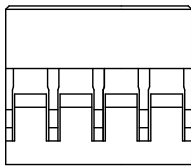


LEGEND:

51110 - **60
CKT SIZE

NOTES :

- MATERIAL : GLASS FILLED POLYESTER UL RATED 94V-0, COLOUR BLACK.
 - FOR ILLUSTRATION PURPOSES, 8CKT CKT SIZE HOUSING IS AS SHOWN.
 - PARTS TO BE USED WITH CRIMP TERMINAL PART NUMBER: 50394-8***.
 - APPLICABLE WIRE RANGE : AWG # 24 - #30"
 - WIRE INSULATION RANGE : DIAMETER 1.40MM MAXIMUM.
- △ MSH LOGO, CAVITY ID AND 1ST CKT IDENTIFICATION TO BE LOCATED APPROXIMATELY AS SHOWN.



CHG MFG LOGO	EC NO: S2015-0352	DRAWN/SEE: 2014/12/09	CHKD/COL/WH GOH 2014/12/09	APPR:KILIM 2014/12/19	DESCRIPTION	QUALITY SYMBOLS	GENERAL TOLERANCES (UNLESS SPECIFIED)		DIMENSION STYLE		SCALE NTS	DESIGN UNITS METRIC	THIRD ANGLE PROJECTION		
							mm	INCH	MM ONLY	DATE					
						▽=0	4 PLACES ±---	±---	DRAWN BY	1995/05/22	TITLE 2MM GRID,WTB CONN. CRIMP RECEPT. HSG.	molex	SHEET NO. 1 OF 1		
						▽=0	3 PLACES ±---	±---	CHECKED BY	DATE					
						▽=1	2 PLACES ±0.20	±---	SK TOH	1995/08/15					
							1 PLACE ±---	±---	APPROVED BY	DATE	MATERIAL NO.	DOCUMENT NO.			
							0 PLACE ±	±	SEE TABLE		SD-51110-***60				
ANGULAR ± 3°							DRAFT WHERE APPLICABLE MUST REMAIN WITHIN DIMENSIONS							THIS DRAWING CONTAINS INFORMATION THAT IS PROPRIETARY TO MOLEX INCORPORATED AND SHOULD NOT BE USED WITHOUT WRITTEN PERMISSION	