



Distributor of Molex Connector Corporation: Excellent Integrated System Limited
Datasheet of 0448120006 - Connector Receptacle, Bottom or Top Entry 6 Position 0.100"
(2.54mm) Tin Through Hole

Contact us: sales@integrated-circuit.com Website: www.integrated-circuit.com

Excellent Integrated System Limited

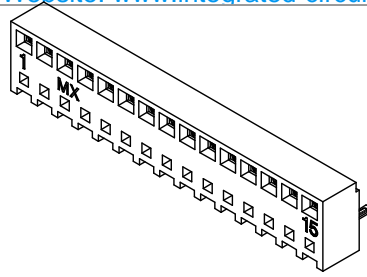
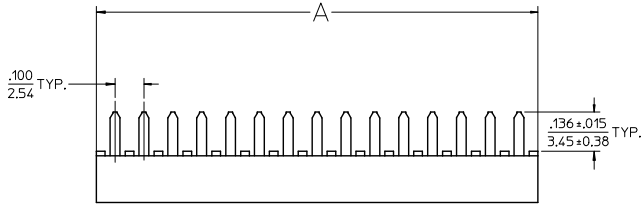
Stocking Distributor

Click to view price, real time Inventory, Delivery & Lifecycle Information:

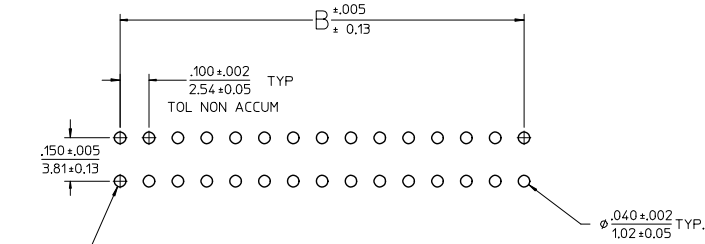
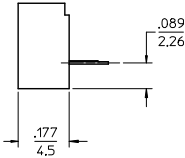
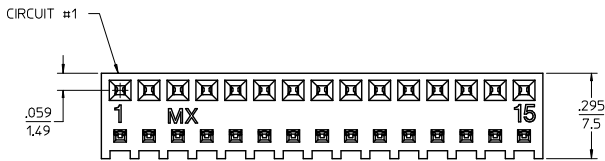
[Molex Connector Corporation](#)
[0448120006](#)

For any questions, you can email us directly:
sales@integrated-circuit.com

Contact us: sales@integrated-circuit.com Website: www.integrated-circuit.com



CKTS	DIM A	DIM B
2	.230	.100
	5.84	2.54
3	.330	.200
	8.38	5.08
4	.430	.300
	10.92	7.62
5	.530	.400
	13.46	10.16
6	.630	.500
	16.00	12.70
7	.730	.600
	18.54	15.24
8	.830	.700
	21.08	17.78
9	.930	.800
	23.62	20.32
10	1.030	.900
	26.16	22.86
11	1.130	1.000
	28.70	25.40
12	1.230	1.100
	31.24	27.94
13	1.330	1.200
	33.78	30.48
14	1.430	1.300
	36.32	33.02
15	1.530	1.400
	38.86	35.56
16	1.630	1.500
	41.40	38.10



PCB LAYOUT : COMPONENT SIDE SHOWN
RECOMMENDED PCB THK: .062/1.57

NOTES :

- MATERIAL -
HOUSING : HIGH TEMP NYLON, GLASS-FILLED, UL94V-0, COLOR - BLACK
TERMINAL : MODIFIED TIN/BRASS ALLOY
- FINISH - (SEE CHART)
A-TIN: .000200/(0.00508) MINIMUM
B-SELECT GOLD: .000015/(0.00038) MIN. SELECT TIN: .000100/(0.00254) MIN. OVER NICKEL
C-SELECT GOLD: .000030/(0.00076) MIN. SELECT TIN: .000100/(0.00254) MIN. OVER NICKEL
- PRODUCT SPECIFICATION : PS-44812-001
- PACKAGING SPECIFICATION : TRAY PACK PER PK-44812-001
- 15 CIRCUIT PART SHOWN SEE SHEET 2 FOR OTHER CIRCUIT SIZES.
- THIS PART CONFORMS TO CLASS B REQUIREMENTS OF COSMETIC SPECIFICATION PS-45499-002.

PCB LAYOUT EC NO: UCP203-1814 2012/11/06 DRAWN BY: DRW:KIPPER 2012/11/06 CHKD: BELL 2012/11/06 APPR: SMITH 2012/11/20	QUALITY SYMBOLS ∇=0 ∇=0 ∇=0	GENERAL TOLERANCES (UNLESS SPECIFIED)		DIMENSION STYLE IN/MM		SCALE 4:1	DESIGN UNITS INCH	THIRD ANGLE PROJECTION
		4 PLACES ± --- ± ---	DRAWN BY MUELLER	DATE 2001/09/22	TITLE KK 100 PCB CONN ASSY LOW PROFILE			
		3 PLACES ± --- ± 0.10	CHECKED BY MUELLER	DATE 2001/09/23	molex			
		2 PLACES ± 0.25 ± 0.15	APPROVED BY MARGULIS	DATE 2001/09/24	MATERIAL NO. SEE CHART	DOCUMENT NO. SD-44812-001	SHEET NO. 1 OF 2	
1 PLACE ± 0.38 ± ---	ANGULAR ± 1/2°		THIS DRAWING CONTAINS INFORMATION THAT IS PROPRIETARY TO MOLEX INCORPORATED AND SHOULD NOT BE USED WITHOUT WRITTEN PERMISSION					
0 PLACE ± ±	DRAFT WHERE APPLICABLE MUST REMAIN WITHIN DIMENSIONS							

Contact us: sales@integrated-circuit.com Website: www.integrated-circuit.com

FINISH: A (TIN)	
CKTS	MATERIAL NO.
2	44812-0002
3	44812-0003
4	44812-0004
5	44812-0005
6	44812-0006
7	44812-0007
8	44812-0008
9	44812-0009
10	44812-0010
11	44812-0011
12	44812-0012
13	44812-0013
14	44812-0014
15	44812-0015
16	44812-0016

FINISH: B (15 GOLD)	
CKTS	MATERIAL NO.
2	44812-0020
3	44812-0021
4	44812-0022
5	44812-0023
6	44812-0024
7	44812-0025
8	44812-0026
9	44812-0027
10	44812-0028
11	44812-0029
12	44812-0030
13	44812-0031
14	44812-0032
15	44812-0033
16	44812-0034

FINISH: C (30 GOLD)	
CKTS	MATERIAL NO.
2	44812-0040
3	44812-0041
4	44812-0042
5	44812-0043
6	44812-0044
7	44812-0045
8	44812-0046
9	44812-0047
10	44812-0048
11	44812-0049
12	44812-0050
13	44812-0051
14	44812-0052
15	44812-0053
16	44812-0054

SEC SHEET 1 EC NO: UCP2013-1814 DRAWN BY: MARGULIS CHECKED BY: MUELLER APPROVED BY: MARGULIS DATE: 2012/11/06 DATE: 2012/11/06 DATE: 2012/11/20	QUALITY SYMBOLS ∇=0 ∇=0 ∇=0	GENERAL TOLERANCES (UNLESS SPECIFIED)		DIMENSION STYLE IN/MM		SCALE 1:1	DESIGN UNITS INCH	THIRD ANGLE PROJECTION	
		4 PLACES ± --- ± ---	mm	INCH	DRAWN BY	DATE	KK 100 PCB CONN ASSY LOW PROFILE molex SD-44812-001 SHEET NO. 2 OF 2		
		3 PLACES ± --- ± .010			CHECKED BY	DATE			
		2 PLACES ± 0.25 ± .015			MUELLER	2011/09/23			
1 PLACE ± 0.38 ± ---			APPROVED BY	DATE					
0 PLACE ± ±			MARGULIS	2011/09/24	MATERIAL NO.		DOCUMENT NO.		
ANGULAR ±1/2° DRAFT WHERE APPLICABLE MUST REMAIN WITHIN DIMENSIONS				SEE CHART SIZE C		THIS DRAWING CONTAINS INFORMATION THAT IS PROPRIETARY TO MOLEX INCORPORATED AND SHOULD NOT BE USED WITHOUT WRITTEN PERMISSION			