

## Excellent Integrated System Limited

Stocking Distributor

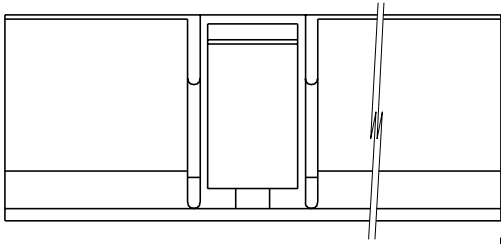
Click to view price, real time Inventory, Delivery & Lifecycle Information:

[Molex Connector Corporation](#)  
[0510670300](#)

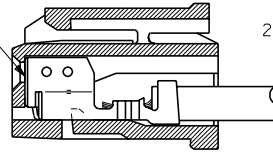
For any questions, you can email us directly:

[sales@integrated-circuit.com](mailto:sales@integrated-circuit.com)

DWG. NO. SD-51067-\*\*\*00  
E  
D  
C  
B  
A  
DIMENSIONS IN METRIC DO NOT SCALE DRAWING



△ターミナル  
TERMINAL



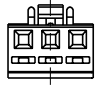
ターミナル装着状態図  
TERMINAL ASSEMBLY DRAWING

注記 NOTES

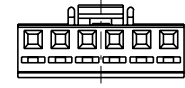
- △適合ターミナル: 50217-\*\*\*\*  
APPLICABLE TERMINAL : 50217-\*\*\*\*
- 2. 嵌合相手: 53258,53265,53259,53266 シリーズ  
MATE WITH : 53258,53265,53259,53266 SERIES



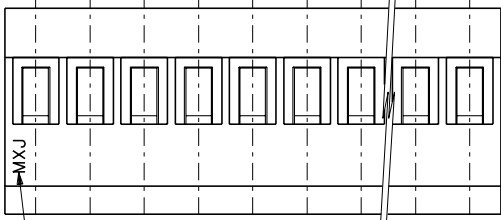
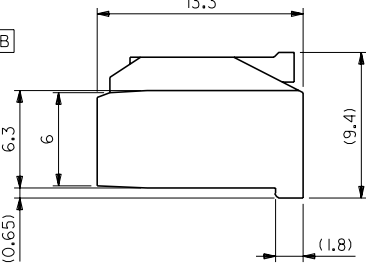
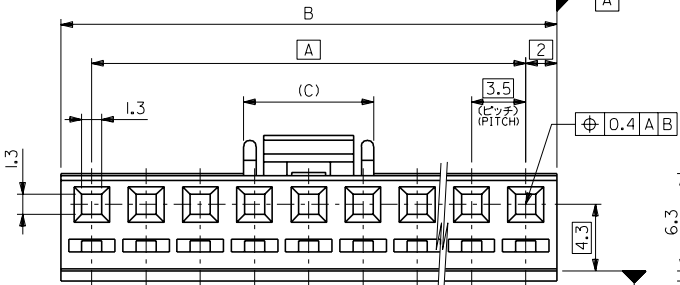
2極に適用  
APPLY FOR 2 CKTS.



3極に適用  
APPLY FOR 3 CKTS.

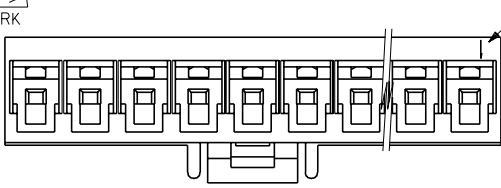


4極以上の偶数極に適用  
APPLY FOR EVEN OF 4 CKTS. OVER



トレードマーク  
TRADE MARK

回路番号  
CIRCUIT NO.



|      |      |       |            |         |
|------|------|-------|------------|---------|
| 8.4  | 53.0 | 49.0  | 51067-1500 | 15      |
| 49.5 | 45.5 | -1400 |            | 14      |
| 46.0 | 42.0 | -1300 |            | 13      |
| 42.5 | 38.5 | -1200 |            | 12      |
| 39.0 | 35.0 | -1100 |            | 11      |
| 35.5 | 31.5 | -1000 |            | 10      |
| 32.0 | 28.0 | -0900 |            | 9       |
| 28.5 | 24.5 | -0800 |            | 8       |
| 25.0 | 21.0 | -0700 |            | 7       |
| 21.5 | 17.5 | -0600 |            | 6       |
| 18.0 | 14.0 | -0500 |            | 5       |
| 8.4  | 14.5 | 10.5  | -0400      | 4       |
| 5.8  | 11.0 | 7.0   | -0300      | 3       |
| 5.8  | 7.5  | 3.5   | 51067-0200 | 2       |
| (C)  | B    | A     | ENG. NO.   | CKT. 極数 |

|                         |                      |             |               |      |          |
|-------------------------|----------------------|-------------|---------------|------|----------|
| 角度 ANGLE                | +3°                  | C           | 変更 (J40647)   | M.S. | 94/8/18  |
| 30以上 OVER               | +0.3                 | B           | 変更 (J30484)   | M.F. | 93/5/18  |
| 10以上 30未満 UNDER         | +0.25                | A           | 変更 (J00226)   | K.Y. | 90-2-28  |
| 10未満 UNDER              | +0.2                 | O           | 新規作成 (J91079) | K.Y. | 89-12-19 |
| 一般公差 GENERAL TOLERANCES |                      |             |               |      |          |
| 記号 LTR                  | 変更内容 REVISION RECORD | DR. 日付 DATE | CHK. 尺度 SCALE |      |          |

|                   |                  |
|-------------------|------------------|
| 材料 MATERIAL       | PBT,UL94V-0      |
| 仕上げ FINISH        | ---              |
| 適用電線範囲 WIRE RANGE | ---              |
| 被覆外径 INS. RANGE   | ---              |
| DRAWN BY 89-12-19 | CHK'D BY 94/8/18 |
| K.ASAKAWA         | H.HIRAMOTO       |
| APP'D BY 94/8/18  | 尺度 SCALE         |
| M.FUKUSHIMA       | ---              |

|  |
|--|
| molex MOLEX-JAPAN CO.,LTD.<br>日本モレックス株式会社  |
| REVISE ONLY ON CAD SYSTEM                  |
| TITLE 名称                                   |
| 3.5 WIRE TO BOARD CONN. RECEPTACLE HOUSING |
| DWG. NO. SD-51067-***00                    |
| REV C                                      |

THIS DRAWING CONTAINS INFORMATION THAT IS PROPRIETARY TO MOLEX(JAPAN) AND SHOULD NOT BE USED WITHOUT WRITTEN PERMISSION  
本図面は日本モレックス(株)の所有する情報を含むもので 当社の許可なく複製を禁止する。 EN-01C(032)MXJ-32