



**Distributor of Molex Connector Corporation: Excellent Integrated System Limited**  
Datasheet of 87340-1624 - Connector Receptacle 16 Position 0.079" (2.00mm) Gold Surface Mount

Contact us: [sales@integrated-circuit.com](mailto:sales@integrated-circuit.com) Website: [www.integrated-circuit.com](http://www.integrated-circuit.com)

---

## **Excellent Integrated System Limited**

Stocking Distributor

Click to view price, real time Inventory, Delivery & Lifecycle Information:

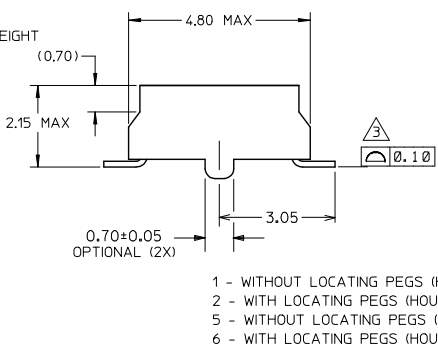
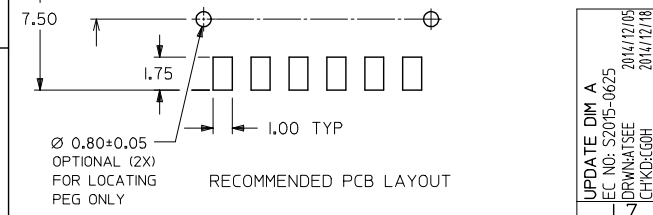
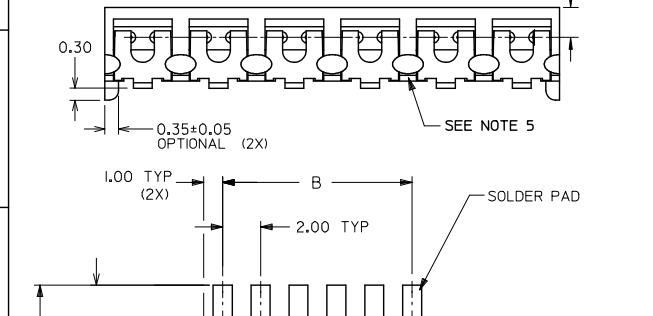
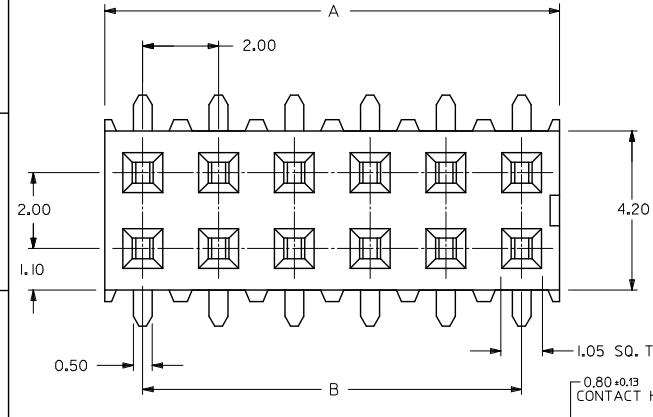
[Molex Connector Corporation](#)  
[87340-1624](#)

For any questions, you can email us directly:  
[sales@integrated-circuit.com](mailto:sales@integrated-circuit.com)

Contact us: sales@integrated-circuit.com Website: www.integrated-circuit.com

PART NO. IN TUBE	CKT. SIZE	DIM. B	DIM. A
87340-04**	4	2.00	4.00
87340-06**	6	4.00	6.00
87340-08**	8	6.00	8.00
87340-10**	10	8.00	10.00
87340-12**	12	10.00	12.00
87340-14**	14	12.00	14.00
87340-16**	16	14.00	16.00
87340-18**	18	16.00	18.00
87340-20**	20	18.00	20.00

- NOTES:
- 12 CIRCUIT SIZE SHOWN FOR ILLUSTRATION ONLY. SEE CHART FOR AVAILABLE PART SIZES.
  - PLATING FINISH:
    - 5 & 7 - 0.05um-0.25um GOLD IN CONTACT AREA  
1.90um/75uin MIN. TIN IN SOLDER TAIL AREA  
BOTH OVER 1.30um/50uin MIN. NICKEL OVERALL
    - 3 & 8 - 0.76um/30uin MIN. GOLD IN CONTACT AREA  
1.90um/75uin MIN. TIN IN SOLDER TAIL AREA  
BOTH OVER 1.30um/50uin MIN. NICKEL OVERALL
    - 4 & 9 - 0.38um/15uin MIN. GOLD IN CONTACT AREA  
1.90um/75uin MIN. TIN IN SOLDER TAIL AREA  
BOTH OVER 1.30um/50uin MIN. NICKEL OVERALL
  - COPLANARITY OF SOLDER TAIL IS TO BE MEASURED BY RESTING THE PART ON A FLAT GAUGE SURFACE.
  - PRODUCT SPECIFICATION PS-87340 APPLIES.
  - THIS AREA OF PART TO BE HEAT STAKED TO RETAIN CONTACTS.
  - PART IS MATEABLE TO ALL MILLI-GRID HEADERS WITH MINIMUM PIN LENGTHS OF 1.90mm FOR TOP ENTRY.



**PART NO. LEGEND**

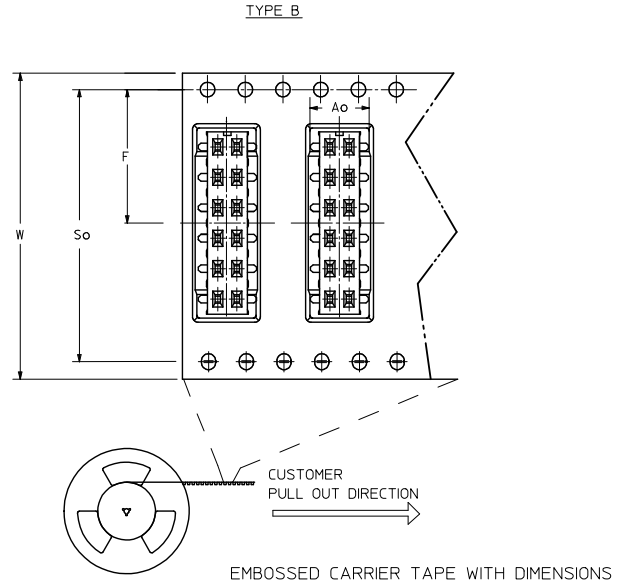
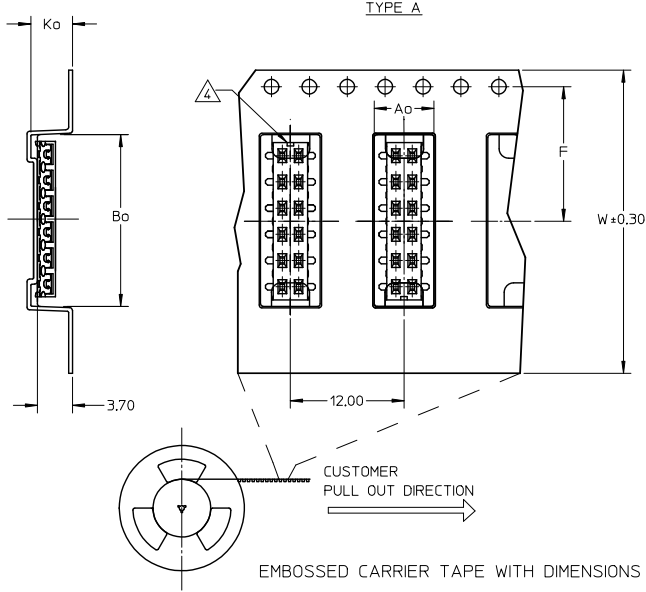
87340 - \* \* \* \*

- 3 - (TUBE WITH 0.76um MIN GOLD)
- 4 - (TUBE WITH 0.38um MIN GOLD)
- 5 - (TUBE WITH 0.05-0.25um GOLD)
- 7 - (T&R WITH 0.05-0.25um GOLD)
- 8 - (T&R WITH 0.76um MIN GOLD)
- 9 - (T&R WITH 0.38um MIN GOLD)

1 - WITHOUT LOCATING PEGS (HOUSING - BLACK)  
2 - WITH LOCATING PEGS (HOUSING - BLACK)  
5 - WITHOUT LOCATING PEGS (HOUSING - NATURAL)  
6 - WITH LOCATING PEGS (HOUSING - NATURAL)

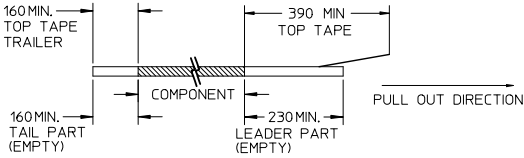
QUALITY SYMBOLS	GENERAL TOLERANCES (UNLESS SPECIFIED)		DIMENSION STYLE		SCALE	DESIGN UNITS	THIRD ANGLE PROJECTION
	mm	INCH	MM ONLY	DATE			
$\nabla=0$	4 PLACES	± ---	± ---	JKACHLI	1991/07/02	METRIC	MGRID VLPR II, 2MM DUAL ROW TOP ENTRY RECEPT., SMT
$\nabla=0$	3 PLACES	± ---	± ---	CHECKED BY	DATE		
$\nabla=0$	2 PLACES	± 0.20	± ---	JNG	1991/07/09		
$\nabla=0$	1 PLACE	± ---	± ---	APPROVED BY	DATE		
		ANGULAR ± 3°		MLONG	2009/11/24		
DRAFT WHERE APPLICABLE MUST REMAIN WITHIN DIMENSIONS				MATERIAL NO.		MOLEX INCORPORATED	
				SEE TABLE		DOCUMENT NO. SD-87340-**-01	
				SIZE		SHEET NO. 1 OF 3	
				THIS DRAWING CONTAINS INFORMATION THAT IS PROPRIETARY TO MOLEX INCORPORATED AND SHOULD NOT BE USED WITHOUT WRITTEN PERMISSION			

Contact us: [sales@integrated-circuit.com](mailto:sales@integrated-circuit.com) Website: [www.integrated-circuit.com](http://www.integrated-circuit.com)

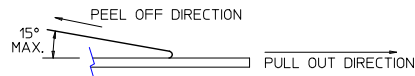


**NOTES:**

**1. LEADER AND TRAILER TAPE**



**2. PEELING OFF FORCE OF THE TOP TAPE: 20-80gf.**  
(PEELING DIRECTION AS SHOWN IN FOLLOWING FIGURE)



**3. PACKAGING STANDARD IS AS PER EIA-481.**

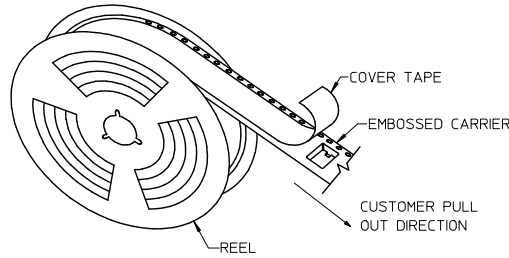
⚠ NO FIX ORIENTATION OF ASSEMBLY PART IN T&R.

**5. TAPE & REEL QUANTITY : TBA**

REMOVE DIM A MAX. EC. NO. S2015-0625 DRAWN/ISSUE: 2014/12/05 CHKD:GOH APPR:KILLIM 2015/01/08	QUALITY SYMBOLS ▽=0 ▽=0 ▽=0	GENERAL TOLERANCES (UNLESS SPECIFIED)		DIMENSION STYLE MM ONLY		SCALE NTS	DESIGN UNITS METRIC	THIRD ANGLE PROJECTION
		4 PLACES ± --- ± ---	3 PLACES ± --- ± ---	2 PLACES ± 0.20 ± ---	1 PLACE ± --- ± ---	ANGULAR ± 3 °	DRAWN BY JKACHLI	DATE 1991/07/02
L7	DESCRIPTION	DRAFT WHERE APPLICABLE MUST REMAIN WITHIN DIMENSIONS		SEE TABLE		APPROVED BY MLONG	DATE 2009/11/24	MOLEX INCORPORATED
				MATERIAL NO.	DOCUMENT NO.	SD-87340-**-01		SHEET NO. 2 OF 3
THIS DRAWING CONTAINS INFORMATION THAT IS PROPRIETARY TO MOLEX INCORPORATED AND SHOULD NOT BE USED WITHOUT WRITTEN PERMISSION								

Contact us: sales@integrated-circuit.com Website: www.integrated-circuit.com

PART NO. IN TUBE	PART NO. TAPE/REEL	CKT SIZE	Ao	Bo	F	W	Ko	So
87340-1014	87340-1019	10	6.70	10.40	11.50	24.00	5.30	-
87340-1613	87340-1618	16	6.60	16.30	11.50	24.00	4.40	-
87340-1424	87340-1429	14	6.60	14.40	11.50	24.00	4.40	-
87340-1813	87340-1818	18	6.60	18.40	14.20	32.00	4.40	28.40
87340-1814	87340-1819	18	6.60	18.40	14.20	32.00	4.40	28.40
87340-2024	87340-2029	20	6.60	20.30	20.20	44.00	5.40	40.40



TAPE AND REEL ASSEMBLY SHOWN IS FOR ILLUSTRATION ONLY.

SEE SHT 1 EC. NO. S2015-0625 DRAWN/ISSUE 2014/12/05 CHKD:GOH 2014/12/18 APPR:KILLIM 2015/01/08 REV L7	QUALITY SYMBOLS $\nabla=0$ $\nabla=0$ $\nabla=0$	GENERAL TOLERANCES (UNLESS SPECIFIED) 4 PLACES $\pm$ --- $\pm$ --- 3 PLACES $\pm$ --- $\pm$ --- 2 PLACES $\pm 0.20$ $\pm$ --- 1 PLACE $\pm$ --- $\pm$ --- ANGULAR $\pm 3^\circ$	DIMENSION STYLE MM ONLY DRAWN BY JKACHLI DATE 1991/07/02 CHECKED BY JNG DATE 1991/07/09 APPROVED BY MLONG DATE 2009/11/24	SCALE NTS DESIGN UNITS METRIC THIRD ANGLE PROJECTION	TITLE MGRID VLPR II, 2MM DUAL ROW TOP ENTRY RECEPT., SMT MOLEX INCORPORATED	MATERIAL NO. SEE TABLE DOCUMENT NO. SD-87340-**-01 SHEET NO. 3 OF 3
	DRAFT WHERE APPLICABLE MUST REMAIN WITHIN DIMENSIONS		THIS DRAWING CONTAINS INFORMATION THAT IS PROPRIETARY TO MOLEX INCORPORATED AND SHOULD NOT BE USED WITHOUT WRITTEN PERMISSION			