

Excellent Integrated System Limited

Stocking Distributor

Click to view price, real time Inventory, Delivery & Lifecycle Information:

[TE Connectivity Alcoswitch Switches](#)
[GDP02](#)

For any questions, you can email us directly:

sales@integrated-circuit.com

Dip Switches "End to End Stackable" Through Hole and Surface Mount **GD Series**

FEATURES:

- Conventional gold wiping contact system
- Available in PC and surface mount configurations
- Traditional tape seal standard
- 95% Minimum solder coverage (90/10 tin lead)
- Withstands wave soldering temperature of 245°C for 3-5 seconds
- Heat deflection temperature of 260°C for surface mount compatibility
- End stackable (GDS version)
- Auto-insertable (GDS and GDB version)
- Vacuum pick and place compatible (GDS, GDB and GDH)
- Half pitch .050" terminal spacing (GDH version)
- Available in optional tape & reel packaging

ENVIRONMENTAL SPECIFICATIONS:

Operating Temperature -30°C to +85°C
 Storage Temperature -45°C to +100°C
 Solder Heat Resistance See page M6-7

MATERIAL SPECIFICATIONS:

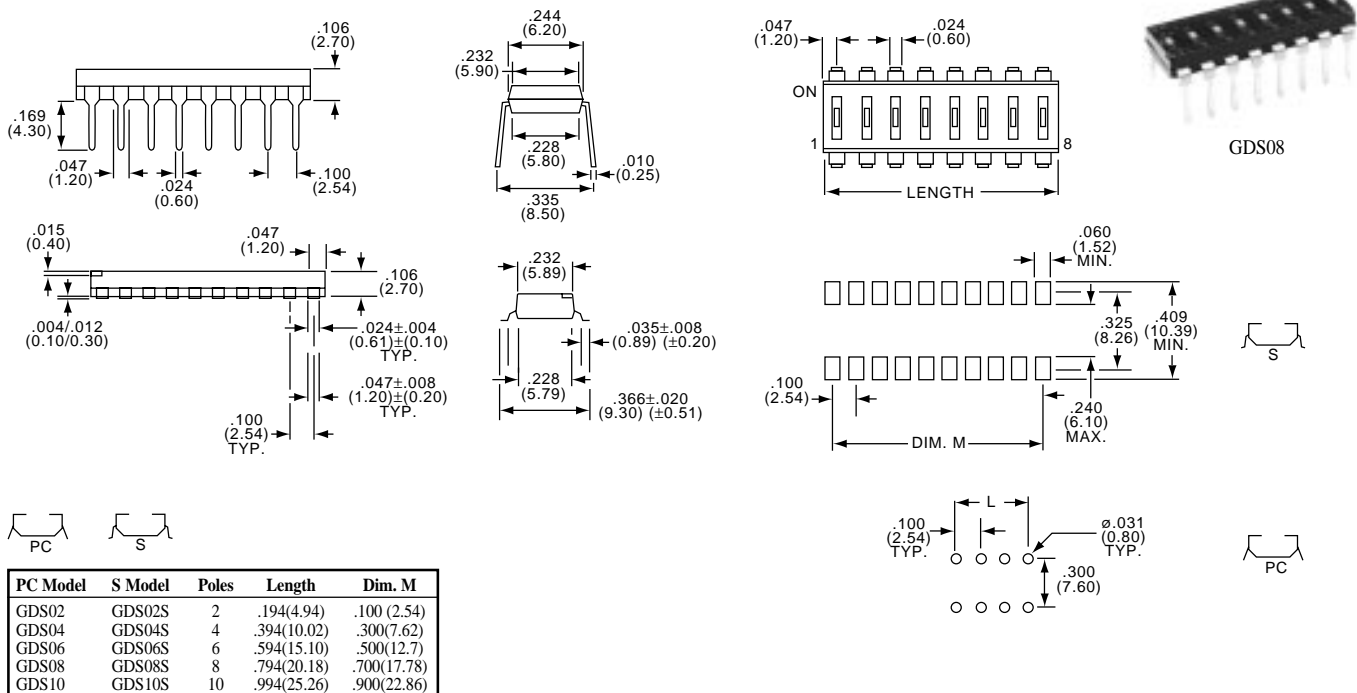
Moving Contact Gold over nickel over copper alloy
 Fixed Contact Gold over copper alloy
 Base Material PPS UL94V-0
 Cover Material PPS UL94V-0
 Actuator Material High temperature polyester/polyamide
 Terminal Tin lead plated over nickel over copper alloy

TYPICAL PERFORMANCE CHARACTERISTICS:

Contact Rating 0.4 VA 25ma @ 24 VDC
 Initial Contact Resistance 100 Milliohms max.
 Insulation Resistance 100 Megohms min. @ 250 VDC
 Dielectric Strength 300 VAC
 Life Expectancy 1,000 Cycles
 Operating Force 60-600 Grams

End to End Stackable!

GDS Low Profile Slide Actuator



See pages M2-M4 for application specific indexing.

Need more technical information?

Consult your Thomas & Betts
 sales office listed on the back cover

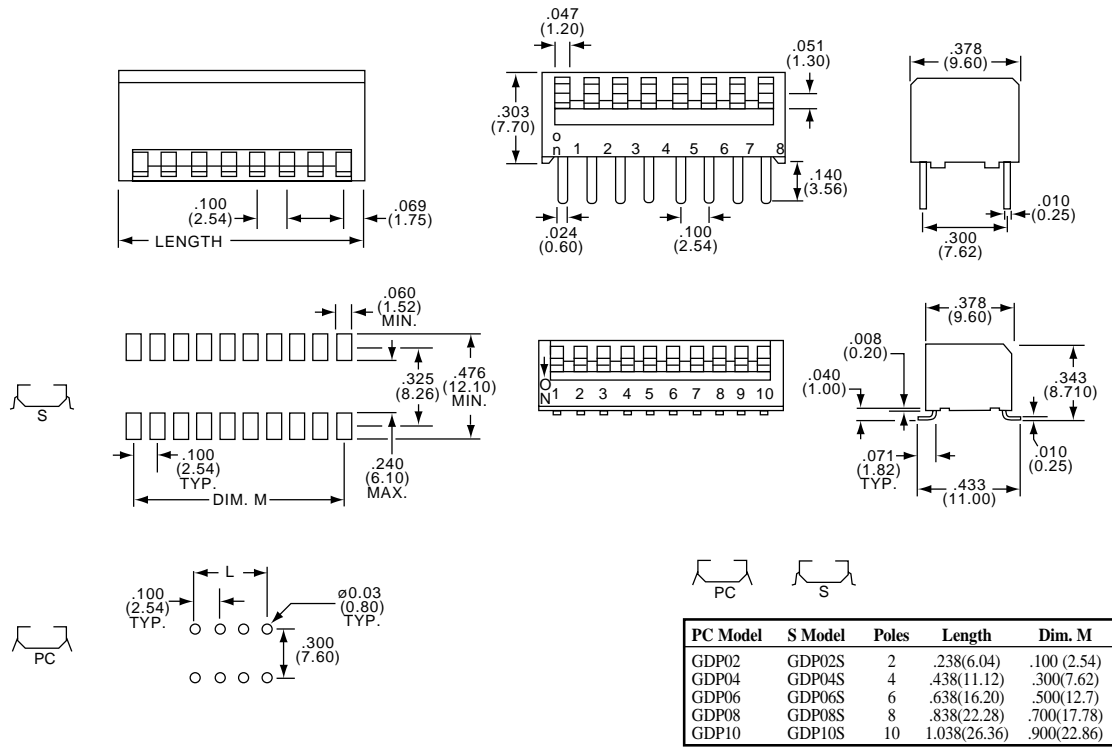
GD Series Dip Switches "Piano and Rocker" Actuator Through hole and Surface Mount

A

GDP
Classic Profile Piano Actuator



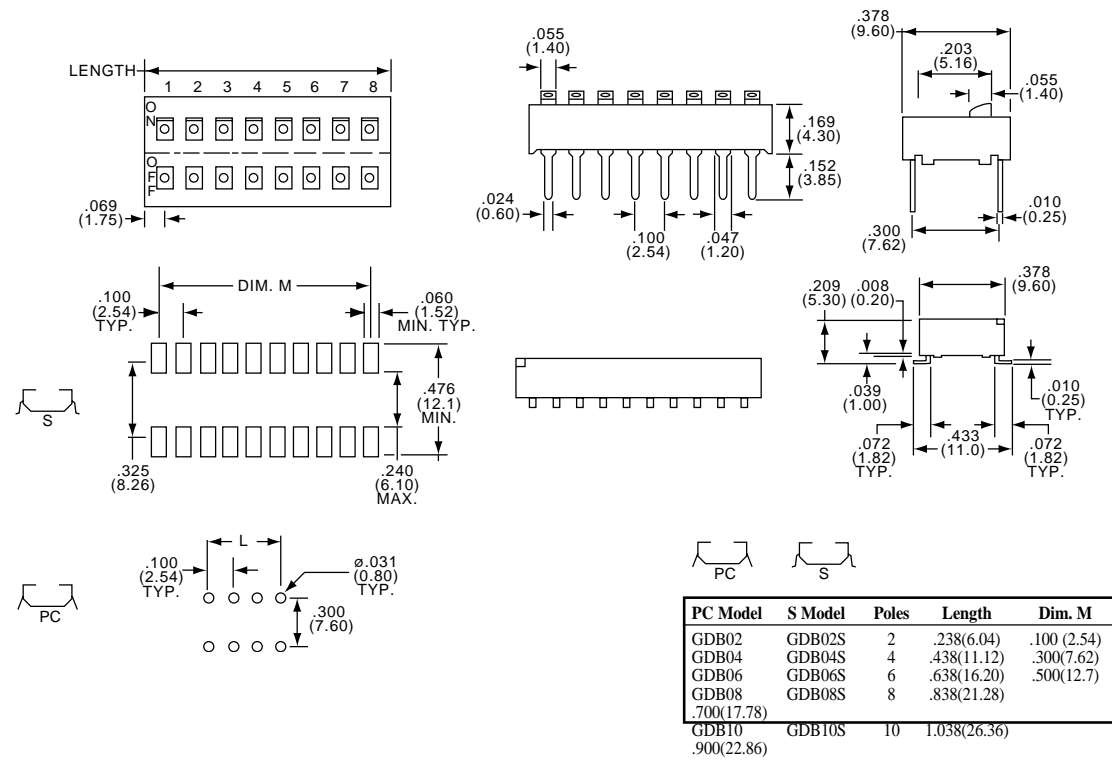
GDP08



GDB
Flush Rocker Actuator



GDB08



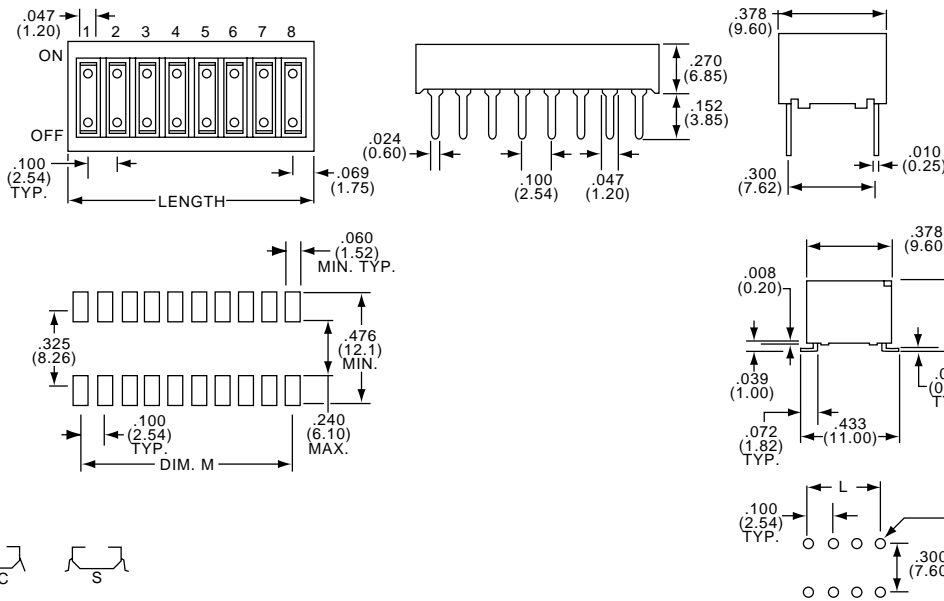
Dip Switches "Recessed Rocker" GD Series

Surface Mount "Half Pitch" .050" Low Profile

GDR
Classic Profile
Recessed Rocker Actuator



GDR08

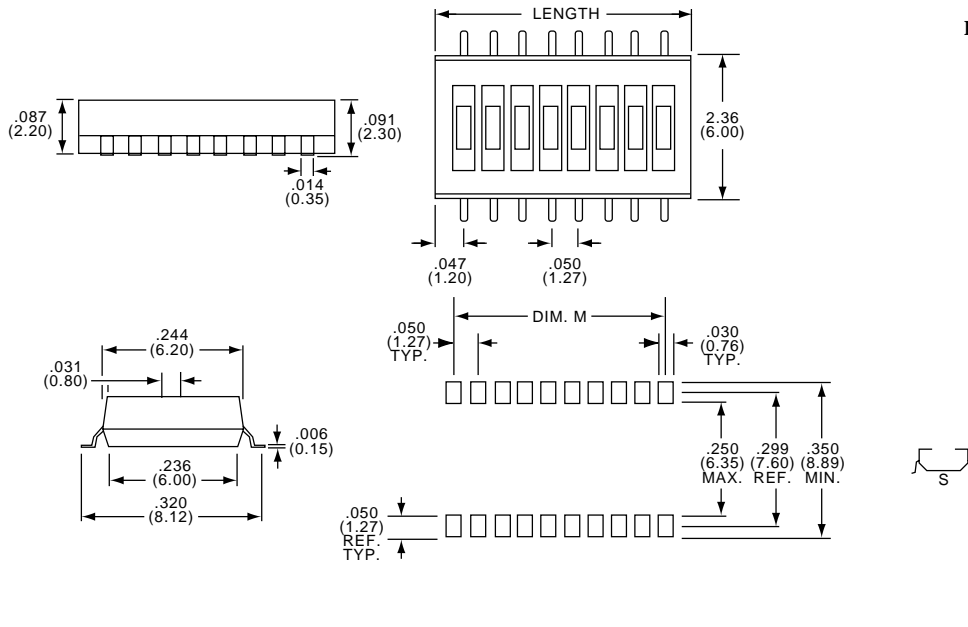


PC Model	S Model	Poles	Length	Dim. M
GDR02	GDR02S	2	.238(6.04)	.100 (2.54)
GDR04	GDR04S	4	.438(11.12)	.300(7.62)
GDR06	GDR06S	6	.638(16.20)	.500(12.70)
GDR08	GDR08S	8	.838(21.28)	.700(17.78)
GDR10	GDR10S	10	1.038(26.36)	.900(22.86)

GDH
Half Pitch .050" Terminal Spacing



GDH08S



S Model	Poles	Length	Dim. M
GDH02S	2	.144(3.66)	.050(1.27)
GDH04S	4	.244(6.20)	.150(3.81)
GDH06S	6	.344(8.75)	.250(6.35)
GDH08S	8	.444(11.29)	.350(8.89)
GDH10S	10	.544(13.82)	.450(11.43)

Need more technical information?
 Consult your Thomas & Betts
 sales office listed on the back cover

Thomas & Betts
 8155 T&B Blvd.
 Memphis, TN 38125
 (901) 252-5000 FAX (901) 252-1380