

Excellent Integrated System Limited

Stocking Distributor

Click to view price, real time Inventory, Delivery & Lifecycle Information:

[Twin Industries](#)
[7050-100-LF](#)

For any questions, you can email us directly:

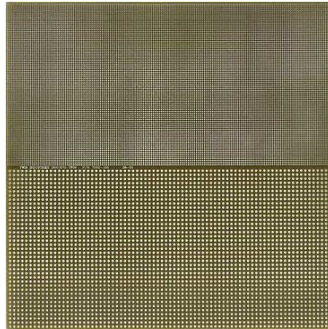
sales@integrated-circuit.com



TWIN INDUSTRIES

Extender Cards – Prototyping Boards – Development Tools

Twin Industries Part# 7050-100



Description:

General Purpose Prototyping Board

4" x 8" Grid of 0.05" Plated Holes (26 mils diameter)

4" x 8" Grid of 0.1" Plated Holes (35 mils diameter)

FR4 Laminate, 0.062" Thick

Overall Dimensions = 8.0" x 8.0"

Ground Plane on Rear Side of Board