

Excellent Integrated System Limited

Stocking Distributor

Click to view price, real time Inventory, Delivery & Lifecycle Information:

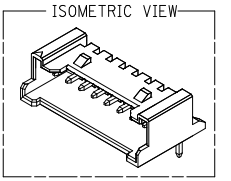
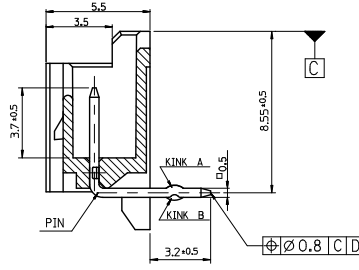
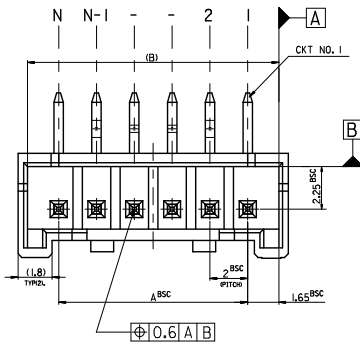
[Molex Connector Corporation](#)
[0353630460](#)

For any questions, you can email us directly:

sales@integrated-circuit.com

10 9 8 7 6 5 4 3 2 1

LEAD FREE

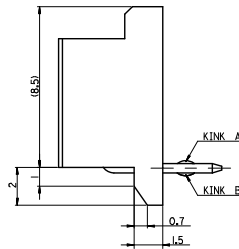
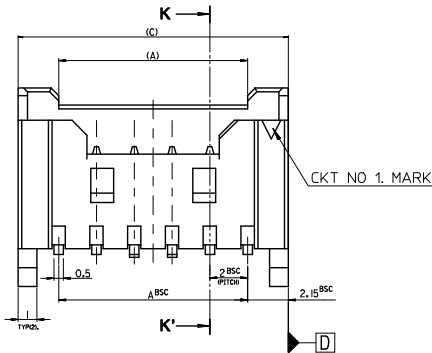
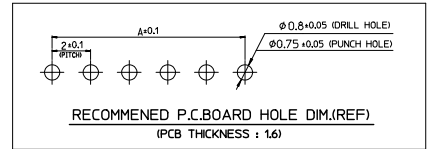


LEGEND

SD-35363-*** 6 * COLOR

- 0 : NATURAL
- 1 : BLACK
- 2 : RED
- 3 : YELLOW
- 4 : BLUE
- 5 : GREEN

CTKT NO. _____ LEAD FREE



32.3	31.3	28	156*	- 156*	15
30.3	29.3	26	146*	- 146*	14
28.3	27.3	24	136*	- 136*	13
26.3	25.3	22	126*	- 126*	12
24.3	23.3	20	116*	- 116*	11
22.3	21.3	18	106*	- 106*	10
20.3	19.3	16	096*	- 096*	9
18.3	17.3	14	086*	- 086*	8
16.3	15.3	12	076*	- 076*	7
14.3	13.3	10	066*	- 066*	6
12.3	11.3	8	056*	- 056*	5
10.3	9.3	6	35363046*	35363-046*	4
(C)	(B)	A	MATERIAL NO.	ENG. NO.	CKT

- NOTES**
- MATERIAL : WAFER - UNFILLED POLYAMIDE, UL94V-0
PIN - BRASS
 - FINISHES : PIN - Tin(Sn) 1 ~ 3 MICROMETER OVERALL
 - PRODUCT SPECIFICATION : PS-35507-003
 - MATES WITH : HOUSING - 35507-***0*
TERMINAL - 50212-8000

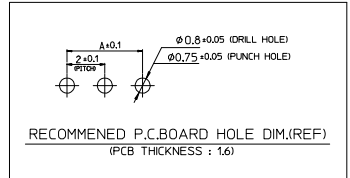
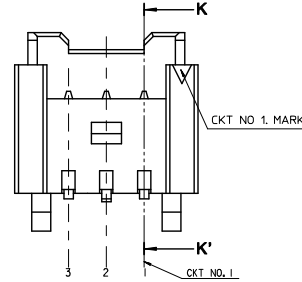
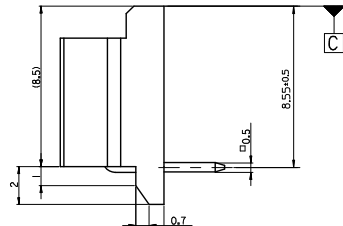
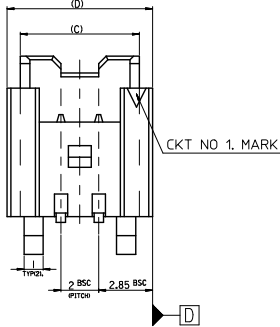
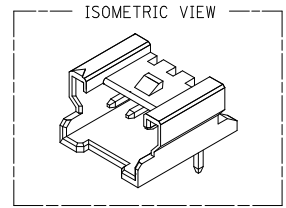
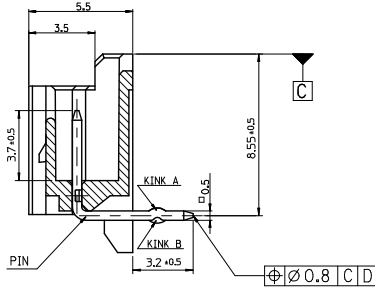
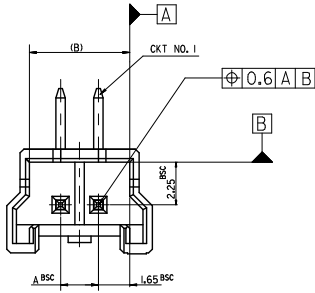
CTKT NO	1	2	3	4	N-2	N-1	N
6 CKT OVER	-	A	B	-	-	B	A
5 CKT	A	B	-	B	A		
4 CKT	A	B	B	A			

30 over	±0.3
10 over 30 under	±0.25
10 under	±0.2
ANGLE	±3°
GENERAL TOLERANCE	

REVISED EC NO: KOR2015-0019 DRW:YKI/M01 2014/08/25 CHK:KSK/H 2014/08/26 APPR:YSK/INOZ 2014/09/03	DESCRIPTION D	QUALITY SYMBOLS ∇=0 ∇=0 ∇=0 ∇=0	GENERAL TOLERANCES (UNLESS SPECIFIED) mm INCH 4 PLACES ± --- ± --- 3 PLACES ± --- ± --- 2 PLACES ± --- ± --- 1 PLACE ± --- ± --- 0 PLACE ± ±	DIMENSION STYLE MM ONLY DRAWN BY YSOK/I M DATE 1996/09/11 CHECKED BY JKOH DATE 1996/09/11 APPROVED BY DATE	SCALE 5:1 DESIGN UNITS METRIC THIRD ANGLE PROJECTION	TITLE 2.0 W/B WAFER R/A ASSY -LEAD FREE-					
							MATERIAL NO. SEE TABLE DRAFT WHERE APPLICABLE MUST REMAIN WITHIN DIMENSIONS SIZE A3 THIS DRAWING CONTAINS INFORMATION THAT IS PROPRIETARY TO MOLEX INCORPORATED AND SHOULD NOT BE USED WITHOUT WRITTEN PERMISSION	DOCUMENT NO. SD-35363-002	SHEET NO. 1 OF 1		

9 8 7 6 5 4 3 2 1

FOR 2 & 3 CKTS. LEAD FREE



LEGEND

SD-35363-*** 6 \pm COLOR

- 0 : NATURAL
- 1 : BLACK
- 2 : RED
- 3 : YELLOW
- 4 : BLUE
- 5 : GREEN

NOTES

1. MATERIAL : WAFER - UNFILLED POLYAMIDE, UL94V-0
PIN - BRASS
2. FINISHES : PIN - Tin(Sn) 1 ~ 3 MICROMETER OVERALL
3. PRODUCT SPECIFICATION : PS-35507-003
4. MATES WITH : HOUSING - 35507-***0*
TERMINAL - 50212-8000
5. KINK

CKT NO.	1	2	3
2 CKT	NONE	KINK	
3 CKT	A	B	A

30 over	± 0.3
10 over 30 under	± 0.25
10 under	± 0.2
ANGLE	$\pm 3^\circ$
GENERAL TOLERANCE	

REVISED	EC NO. KOR2015-0019	2014/08/25
D	DRW:KTK1M01	2014/08/26
	CHK:KSK1M	2014/09/03
	APP:YSK1M02	2014/09/03

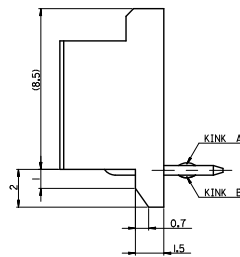
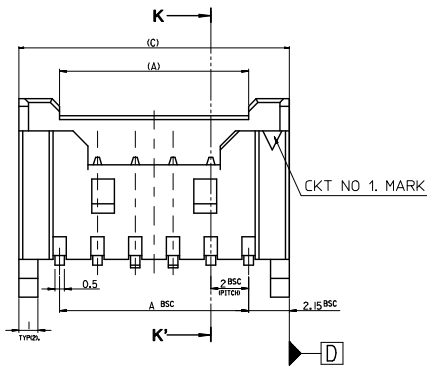
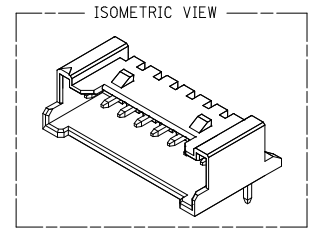
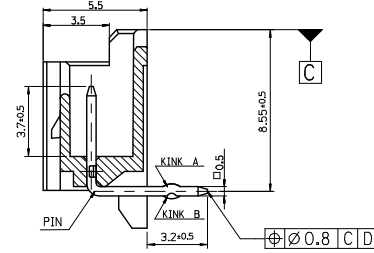
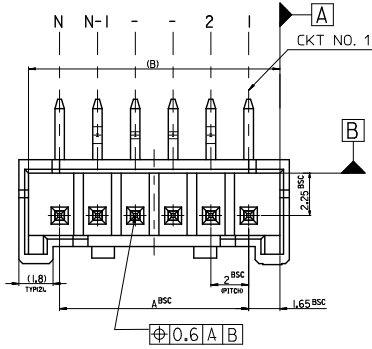
QUALITY SYMBOLS	DESCRIPTION
$\nabla=0$	
$\nabla=0$	
$\nabla=0$	

GENERAL TOLERANCES (UNLESS SPECIFIED)	
	mm INCH
4 PLACES	\pm --- \pm ---
3 PLACES	\pm --- \pm ---
2 PLACES	\pm --- \pm ---
1 PLACE	\pm --- \pm ---
0 PLACE	\pm --- \pm ---
ANGULAR \pm --- \circ	
DRAFT WHERE APPLICABLE MUST REMAIN WITHIN DIMENSIONS	

9.7	8.3	7.3	4	35363036*	35363-036*	3
7.7	6.3	5.3	2	35363026*	35363-026*	2
(D)	(C)	(B)	A	MATERIAL NO.	ENG. NO.	CKT

DIMENSION STYLE		SCALE	DESIGN UNITS	THIRD ANGLE PROJECTION
MM ONLY		5:1	METRIC	\odot \triangleleft
DRAWN BY		DATE	TITLE	
YSOOKIM		1996/09/11	2.0 W/B WAFER R/A ASS'Y	
CHECKED BY		DATE	-LEAD FREE-	
JKOH		1996/09/11	molex	
APPROVED BY		DATE	DOCUMENT NO.	
			SD-35363-002	
MATERIAL NO.		SEE TABLE		SHEET NO.
		THIS DRAWING CONTAINS INFORMATION THAT IS PROPRIETARY TO MOLEX INCORPORATED AND SHOULD NOT BE USED WITHOUT WRITTEN PERMISSION		1 OF 1

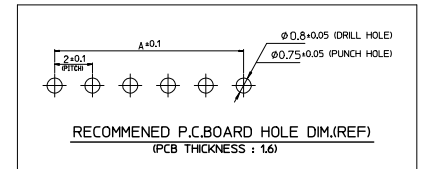
LEAD FREE



LEGEND

SD-35363-**-** 6 * COLOR

- 0 : NATURAL
- 1 : BLACK
- 2 : RED
- 3 : YELLOW
- 4 : BLUE
- 5 : GREEN



NOTES

1. MATERIAL : WAFER - UNFILLED POLYAMIDE, UL94V-0
PIN - BRASS
2. FINISHES : PIN - Tin(Sn) 1 ~ 3 MICROMETER OVERALL
3. PRODUCT SPECIFICATION : PS-35507-003
4. MATES WITH : HOUSING - 35507-**-0*
TERMINAL - 50212-8000
5. KINK

CKT NO	1	2	3	4	N-3	N-2	N-1	N
20	-	A	B	-	-	B	A	-

30 over	±0.3
10 over 30 under	±0.25
10 under	±0.2
ANGLE	±3°
GENERAL TOLERANCE	

REV	DESCRIPTION	DATE
REVISD	EC NO: KOR2015-0019	2014/08/25
D	DRWN:KIM	2014/08/26
	CHK:KSKIM	2014/08/26
	APP:YSKIM	2014/09/03

QUALITY SYMBOLS	GENERAL TOLERANCES (UNLESS SPECIFIED)	
	mm	INCH
▽=0	4 PLACES ±---	±---
▽=0	3 PLACES ±---	±---
▽=0	2 PLACES ±---	±---
▽=0	1 PLACE ±---	±---
▽=0	0 PLACE ±	±
	ANGULAR ±---°	

DRAFT WHERE APPLICABLE
MUST REMAIN WITHIN DIMENSIONS

42.3	41.3	38	35363206*	35363-206*	20
(C)	(B)	A	MATERIAL NO.	ENG. NO.	CKT
DIMENSION STYLE		SCALE	DESIGN UNITS	THIRD ANGLE PROJECTION	
MM ONLY		5:1	METRIC		
DRAWN BY			DATE	TITLE	
YSOOKIM			1998/04/23	2.0 W/B WAFER R/A ASS'Y	
CHECKED BY			DATE	-LEAD FREE-	
JKOH			1998/04/23		
APPROVED BY			DATE		
MATERIAL NO.			DOCUMENT NO.	SHEET NO.	
SEE TABLE			SD-35363-002	1 OF 1	
THIS DRAWING CONTAINS INFORMATION THAT IS PROPRIETARY TO MOLEX INCORPORATED AND SHOULD NOT BE USED WITHOUT WRITTEN PERMISSION					