

## **Excellent Integrated System Limited**

Stocking Distributor

Click to view price, real time Inventory, Delivery & Lifecycle Information:

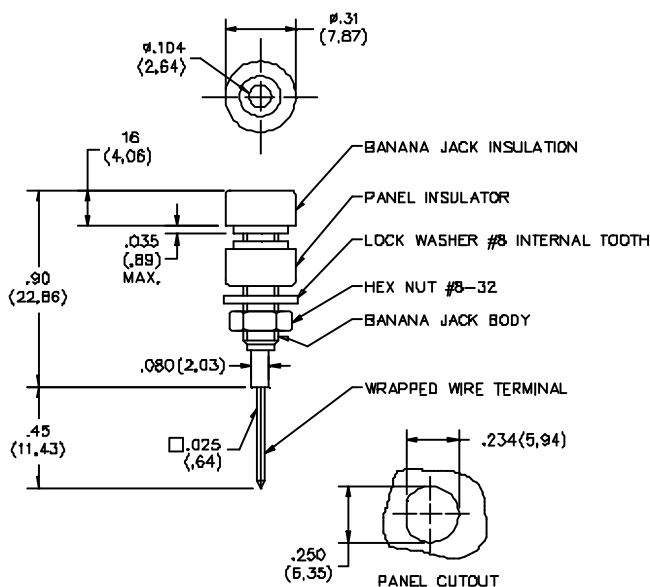
[Pomona Electronics](#)  
[4022-0](#)

For any questions, you can email us directly:

[sales@integrated-circuit.com](mailto:sales@integrated-circuit.com)

Pomona®

**Model 4022**  
**Insulated Banana Jack, Miniature**  
**With Wire Wrap Terminal**



**FEATURES:**

- Accepts miniature banana plugs.
- Mounts in panels up to .250" thick.

**MATERIALS:**

Jack: Nickel Plated Brass

Terminal: Gold Plated Phosphor Bronze

Insulation: Polycarbonate molded to Banana Jack body

Panel Insulator: Polycarbonate. Color matches color of Banana Jack insulation.

Lockwasher #8 Internal Tooth: Steel. Nickel plated per QQ-N-290 Class 2, 200/300 microinches.

Wrapped Wire Terminal: Beryllium Copper. Gold plated per MIL-G-45204, Type II Class 00 over electroless nickel per MIL-C-26074, Class 1, 200/300 microinches.

**RATINGS:**

Operating Temperature: +115°C (+239°F) Max.

Operating Voltage: 1500 VDC

Current: 3 Amperes

**ORDERING INFORMATION:** Model 4022-\*

Standard Colors: Available in 10 colors: -0 Black, -2 Red, -3 Orange, -4 Yellow, -5 Green, -6 Blue, -7 Violet, -8 Gray, -9 White

Sold in packages of 10 per color.

All dimensions are in inches. Tolerances (except noted): .xx = ±.02" (.51 mm), .xxx = ±.005" (.127 mm).  
 All specifications are to the latest revisions. Specifications are subject to change without notice.  
 Registered trademarks are the property of their respective companies.

Made in USA

Sales: 800-490-2361 Fax: 888-403-3360  
 Technical Assistance: 800-241-2060

PomonaACCESS 90223 (800) 444-6785 or (425) 446-6010  
 More drawings available at www.pomonaelectronics.com