

Excellent Integrated System Limited

Stocking Distributor

Click to view price, real time Inventory, Delivery & Lifecycle Information:

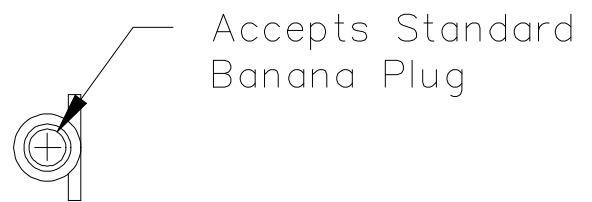
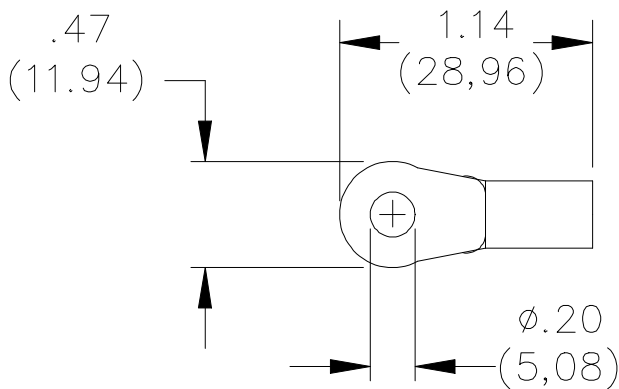
[Pomona Electronics](#)
[5531](#)

For any questions, you can email us directly:

sales@integrated-circuit.com

Pomona®

Model 5531 Ring Terminal With Banana Jack



MATERIALS:

High conductivity copper.

Finish: Tin plated

RATINGS:

Current: 15 Amperes

ORDERING INFORMATION: Model 5531

All dimensions are in inches. Tolerances (except noted): .xx = ±.02" (.51 mm), .xxx = ±.005" (.127 mm).

All specifications are to the latest revisions. Specifications are subject to change without notice.

Registered trademarks are the property of their respective companies.

Made in USA