

Excellent Integrated System Limited

Stocking Distributor

Click to view price, real time Inventory, Delivery & Lifecycle Information:

[TE Connectivity AMP Connectors](#)
[606287-1](#)

For any questions, you can email us directly:

sales@integrated-circuit.com

4

3

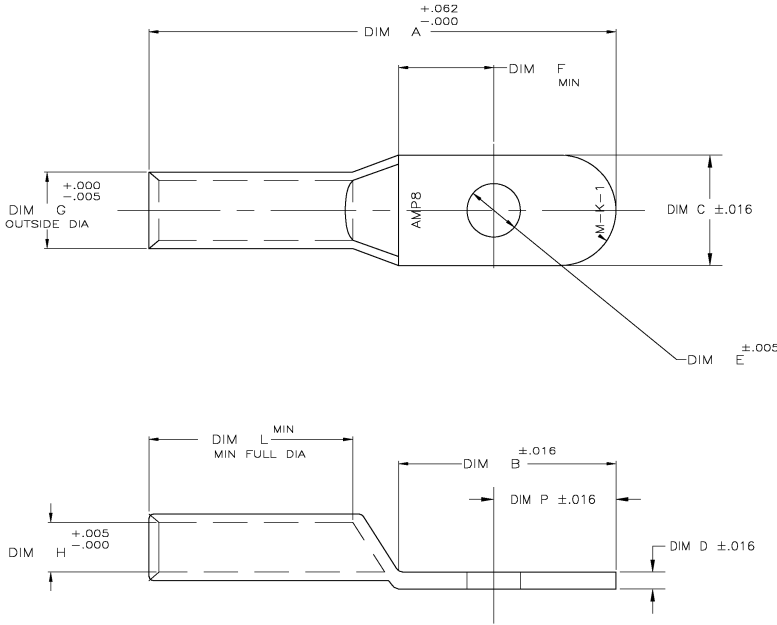
2

1

THIS DRAWING IS UNPUBLISHED. RELEASED FOR PUBLICATION
 © COPYRIGHT BY TYCO ELECTRONICS CORPORATION. ALL RIGHTS RESERVED.

LOC	DRGT	REVISIONS			
TP	LTN	DESCRIPTION	DATE	BY	APPD
C	86	E	REV PER 003A-0088-05	01JUN05	JR MS

△ HIGH CONDUCTIVITY WROUGHT COPPER, ANNEALED.



OBSOLETE
 OBSOLETE
 OBSOLETE

P	L	H	G	F	BOLT HOLE SIZE	E	D	C	B	A	PART NO
.220	.700	.182	.286	.248	#8	.173 DIA	.094	.406	.500	1.437	606287-6
.375	.700	.182	.286	.440	.375	3/94 DIA	.062	.594	.846	1.781	606287-4
.343	.700	.182	.286	.355	.312	3/31 DIA	.062	.594	.728	1.689	606287-3
.250	.700	.182	.286	.305	.250	.265 DIA	.078	.469	.587	1.531	606287-2
.220	.700	.182	.286	.251	#10	.197 DIA	.094	.406	.502	1.437	606287-1

THIS DRAWING IS A CONTROLLED DOCUMENT.		BY: R. RUTH	DATE: 09/07/99	Tyco Electronics Corporation Harrisburg, Pa 17105-3608	
DIMENSIONS: INCHES	TOLERANCES UNLESS OTHERWISE SPECIFIED:	BY: M. SPICER	DATE: 09/07/99	AMP TUBULAR TERMINAL, 8 AWG	
Ø FRC ± .005	FRC ± .005	BY: M. SPICER	DATE: 09/07/99	AMP TUBULAR TERMINAL, 8 AWG	
FRC ± .005	FRC ± .005	BY: M. SPICER	DATE: 09/07/99	AMP TUBULAR TERMINAL, 8 AWG	
ANGLES ± .5°	ANGLES ± .5°	BY: M. SPICER	DATE: 09/07/99	AMP TUBULAR TERMINAL, 8 AWG	
MATERIAL: FRESH ELECTRO TIN PLATE	WEIGHT: -	BY: M. SPICER	DATE: 09/07/99	AMP TUBULAR TERMINAL, 8 AWG	
CUSTOMER DRAWING		SIZE: A2	CAGE CODE: 00779	DRAWING NO: 606287	RESTRICTED TO: -
		SCALE: 1:1	SHEET: 1 OF 1	REV: E	