

Excellent Integrated System Limited

Stocking Distributor

Click to view price, real time Inventory, Delivery & Lifecycle Information:

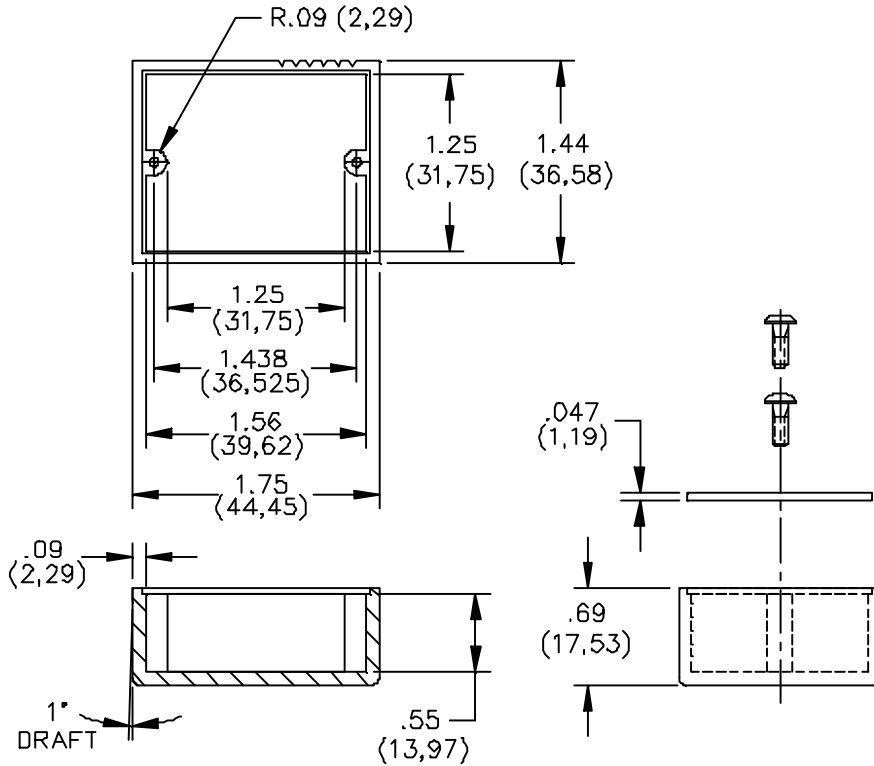
[Pomona Electronics](#)
[2105](#)

For any questions, you can email us directly:

sales@integrated-circuit.com

Pomona®

Model 2105 Phenolic Box With Cover



MATERIALS:

Screws: 2 ea. #2-56 x 3/16" Pan Head, Steel

Cover: Phenolic Plate. Color: Black

Molded Housing: Electrical grade Phenolic. Color: Black

Marking: POMONA ELECTRONICS CALIF.

RATINGS):

Operating Temperature: +150°C. (+302°F.) Max.

ORDERING INFORMATION: Model 2105

All dimensions are in inches. Tolerances (except noted): .xx = ±.02" (.51 mm), .xxx = ±.005" (.127 mm).

All specifications are to the latest revisions. Specifications are subject to change without notice.

Registered trademarks are the property of their respective companies. Made in USA