

Excellent Integrated System Limited

Stocking Distributor

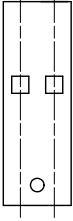
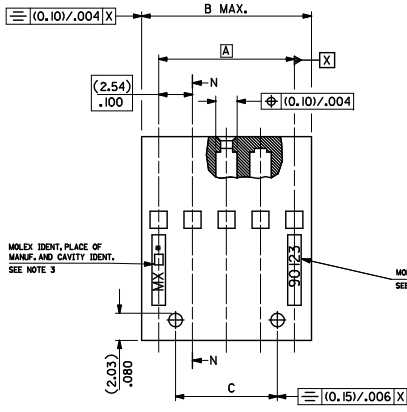
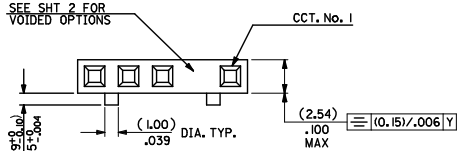
Click to view price, real time Inventory, Delivery & Lifecycle Information:

[Molex Connector Corporation](#)
[90123-0107](#)

For any questions, you can email us directly:

sales@integrated-circuit.com

13 12 11 10 9 8 7 6 5 4 3 2 1

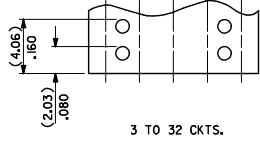


2 CKTS ONLY.

2 POLARISING BUTTON VERSION

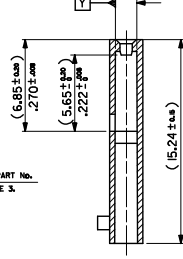


2 CKTS ONLY.



3 TO 32 CKTS.

4 POLARISING BUTTON VERSION



SECTION N-N

SECTION N-N (THROUGH VOIDS WHERE APPLICABLE)

NO. OF CKTS	PART NUMBER		DIM A	DIM B	DIM C
	2 BUTT'S	4 BUTT'S			
2	90123-0102	90123-0202	(2.54)/0.100	(5.08)/0.200	---
3	90123-0103	90123-0203	(5.08)/0.200	(7.62)/0.300	(2.54)/0.100
4	90123-0104	90123-0204	(7.62)/0.300	(10.16)/0.400	(5.08)/0.200
5	90123-0105	90123-0205	(10.16)/0.400	(12.70)/0.500	(7.62)/0.300
6	90123-0106	90123-0206	(12.70)/0.500	(15.24)/0.600	(10.16)/0.400
7	90123-0107	90123-0207	(15.24)/0.600	(17.78)/0.700	(12.70)/0.500
8	90123-0108	90123-0208	(17.78)/0.700	(20.32)/0.800	(15.24)/0.600
9	90123-0109	90123-0209	(20.32)/0.800	(22.86)/0.900	(17.78)/0.700
10	90123-0110	90123-0210	(22.86)/0.900	(25.40)/1.000	(20.32)/0.800
11	90123-0111	90123-0211	(25.40)/1.000	(27.94)/1.100	(22.86)/0.900
12	90123-0112	90123-0212	(27.94)/1.100	(30.48)/1.200	(25.40)/1.000
13	90123-0113	90123-0213	(30.48)/1.200	(33.02)/1.300	(27.94)/1.100
14	90123-0114	90123-0214	(33.02)/1.300	(35.56)/1.400	(30.48)/1.200
15	90123-0115	90123-0215	(35.56)/1.400	(38.10)/1.500	(33.02)/1.300
16	90123-0116	90123-0216	(38.10)/1.500	(40.64)/1.600	(35.56)/1.400
17	90123-0117	90123-0217	(40.64)/1.600	(43.18)/1.700	(38.10)/1.500
18	90123-0118	90123-0218	(43.18)/1.700	(45.72)/1.800	(40.64)/1.600
19	90123-0119	90123-0219	(45.72)/1.800	(48.26)/1.900	(43.18)/1.700
20	90123-0120	90123-0220	(48.26)/1.900	(50.80)/2.000	(45.72)/1.800
21	90123-0121	90123-0221	(50.80)/2.000	(53.34)/2.100	(48.26)/1.900
22	90123-0122	90123-0222	(53.34)/2.100	(55.88)/2.200	(50.80)/2.000
23	90123-0123	90123-0223	(55.88)/2.200	(58.42)/2.300	(53.34)/2.100
24	90123-0124	90123-0224	(58.42)/2.300	(60.96)/2.400	(55.88)/2.200
25	90123-0125	90123-0225	(60.96)/2.400	(63.50)/2.500	(58.42)/2.300
26	90123-0126	90123-0226	(63.50)/2.500	(66.04)/2.600	(60.96)/2.400
27	90123-0127	90123-0227	(66.04)/2.600	(68.58)/2.700	(63.50)/2.500
28	90123-0128	90123-0228	(68.58)/2.700	(71.12)/2.800	(66.04)/2.600
29	90123-0129	90123-0229	(71.12)/2.800	(73.66)/2.900	(68.58)/2.700
30	90123-0130	90123-0230	(73.66)/2.900	(76.20)/3.000	(71.12)/2.800
31	90123-0131	90123-0231	(76.20)/3.000	(78.74)/3.100	(73.66)/2.900
32	90123-0132	90123-0232	(78.74)/3.100	(81.28)/3.200	(76.20)/3.000

NOTES:

1. MATERIAL: POLYPHENYLENE OXIDE 94 VI COLOUR BLACK.
2. BUTTONS ARE LOCATED BETWEEN CIRCUITS 1 & 2 AND N-1 & N (WHERE N IS THE NUMBER OF CIRCUITS)
3. PART NO. AND CAVITY I.D. TO BE (1.00)/.040 HIGH AND RAISED (0.07)/.003 IN A (0.15)/.006 DEEP WELL
4. PRODUCT SPECIFICATION: PS-99020-0001

90123 - 0 * * *
INDICATES NO. OF CIRCUITS

INDICATES NO. OF BUTTONS.
1 - 2 BUTTONS
2 - 4 BUTTONS

90123 - 9 9 * * *
VOIDED OPTIONS, PER SHT 2.

ADDED NOTE 4 EC NO: S2015-0690 DRAWING: 2014/10/19 CHK'D: CHIKO SAEONG APPR: KILIM 2014/10/23 2014/10/29	QUALITY SYMBOLS ▽=0 ▽=0	GENERAL TOLERANCES (UNLESS SPECIFIED)		DIMENSION STYLE MM/IN		SCALE 5:1	DESIGN UNITS METRIC	THIRD ANGLE PROJECTION			
		4 PLACES ±--- ±---	3 PLACES ±--- ±.004	2 PLACES ±0.10 ±---	1 PLACE ±--- ±---	ANGULAR ±1/2°	DRAWN BY DB		DATE	TITLE C-GRID III SINGLE ROW MODULAR CRIMP CONNECTOR HOUSING	
		DRAFT WHERE APPLICABLE MUST REMAIN WITHIN DIMENSIONS					CHECKED BY J. DENNEHY		DATE 2006/05/22	APPROVED BY J. DENNEHY	DATE 2006/05/22
		MATERIAL NO. SEE CHART		DOCUMENT NO. SD-90123		SHEET NO. 1 OF 2					

13 12 11 10 9 8 7 6 5 4 3 2 1