

## Excellent Integrated System Limited

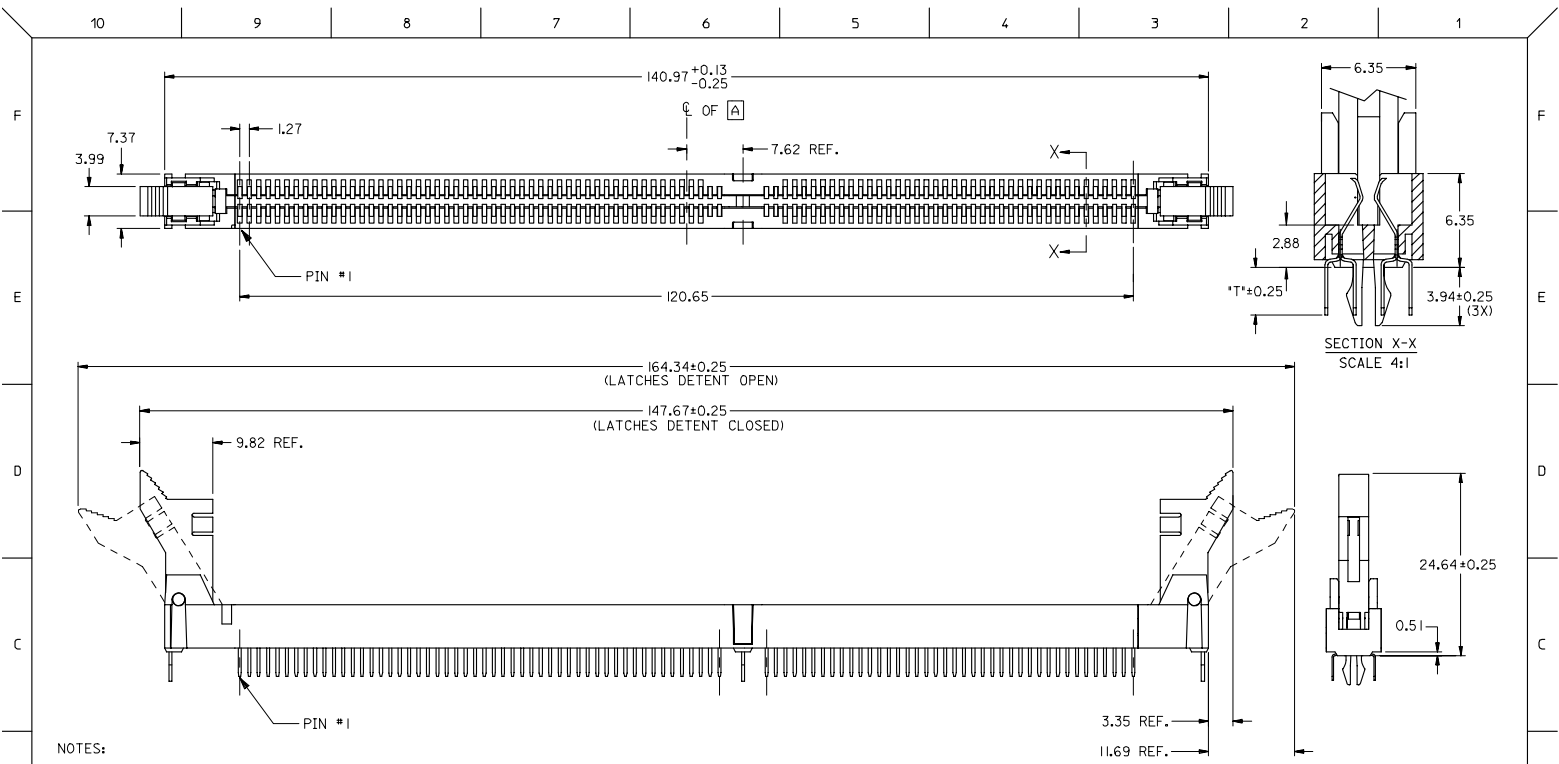
Stocking Distributor

Click to view price, real time Inventory, Delivery & Lifecycle Information:

[Molex Connector Corporation](#)  
[87636-2002](#)

For any questions, you can email us directly:

[sales@integrated-circuit.com](mailto:sales@integrated-circuit.com)



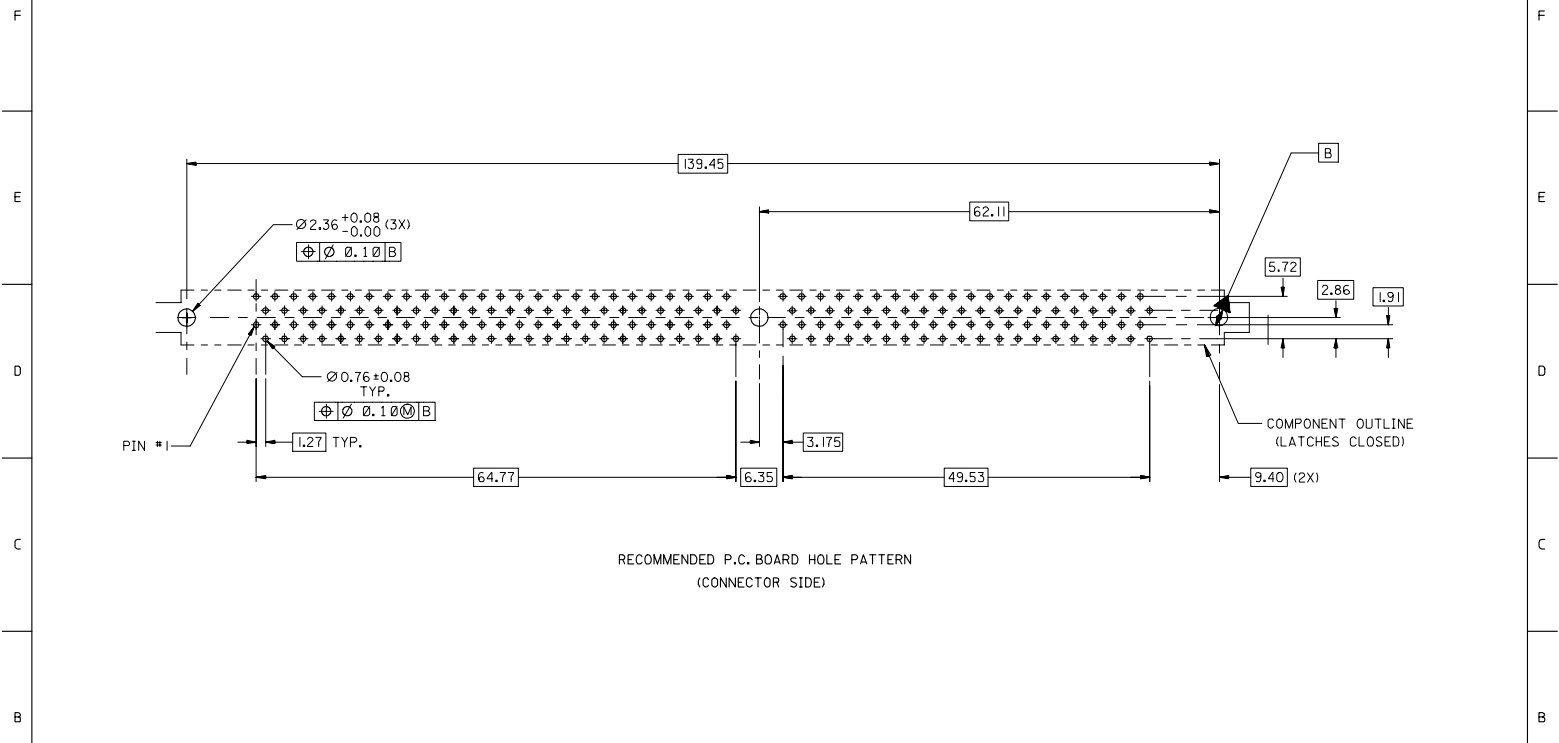
- NOTES:
- CARD SLOT ACCEPTS 1.27±0.10 MM MODULE THICKNESS. (MEASURED OVER P.C. PADS).
  - REFER TO PRODUCT SPEC. PS-87736-003 FOR PERFORMANCE SPECIFICATIONS.
  - RECOMMENDED MODULE LAYOUT SHALL BE PER MO-206.
  - RECOMMENDED PLATING ON MODULE PADS: 0.76 μM MIN HARD GOLD (Au) OVER 2.0 μM MIN NICKEL (Ni).
  - PRODUCT WILL HAVE DATE CODE STAMPED ON SIDE OF HOUSING.

MATERIALS:  
 HOUSING - LCP, GLASS FILLED, UL94V-0, COLOR: BLACK  
 TERMINAL - COPPER ALLOY  
 LATCHES - HIGH TEMP NYLON, GLASS FILLED, UL94V-0

PLATING:  
 CONTACT AREA: SEE TABLE IN SHEET 3.  
 SOLDER TAILS: TIN THICKNESS=1.91 μM/(75 μIN) MIN.  
 UNDERPLATE: 1.27 μM/(50 μIN) MIN NICKEL (Ni).

ADD DIMENSION EC NO: S2007-0163 2006/08/17 DRWING: MEO 2006/08/17 CHKD: SHLEN 2006/08/18 APPR: GLEE	DESCRIPTION REV E1	QUALITY SYMBOLS ▽=0 ▽=0	GENERAL TOLERANCES (UNLESS SPECIFIED)		DIMENSION STYLE MM ONLY		SCALE NTS	DESIGN UNITS METRIC	THIRD ANGLE PROJECTION
		4 PLACES ± --- ± --- 3 PLACES ± --- ± --- 2 PLACES ± 0.15 ± --- 1 PLACE ± --- ± ---	mm INCH	DRAWN BY MLONG DATE 2000/05/10	CHECKED BY SQUEK DATE 2000/05/11	TITLE DDR DIMM, 127MM PITCH 184 CKTS, SINGLE KEY			
		ANGULAR ± 3 °		APPROVED BY SKTOH DATE 2000/05/12	MOLEX INCORPORATED		MATERIAL NO. SEE TABLE	DOCUMENT NO. SD-87636-001	SHEET NO. 1 OF 4
		DRAFT WHERE APPLICABLE MUST REMAIN WITHIN DIMENSIONS			THIS DRAWING CONTAINS INFORMATION THAT IS PROPRIETARY TO MOLEX INCORPORATED AND SHOULD NOT BE USED WITHOUT WRITTEN PERMISSION				

10 9 8 7 6 5 4 3 2 1



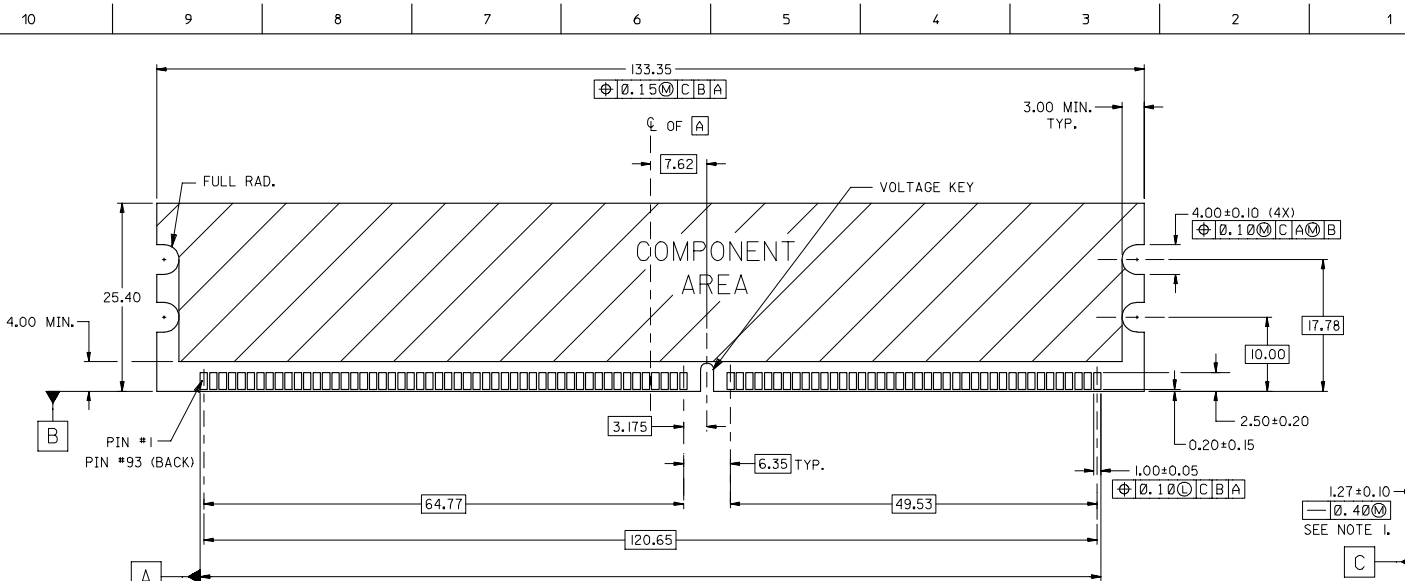
RECOMMENDED P.C. BOARD HOLE PATTERN  
(CONNECTOR SIDE)

ADD DIMENSION EC NO: S2007-0163 DRAWN/CMO: 2006/08/17 CHKD/SHEIN: 2006/08/17 APPR/GGLEE: 2006/08/18	QUALITY SYMBOLS ▽=0 ▽=0	GENERAL TOLERANCES (UNLESS SPECIFIED)		DIMENSION STYLE MM ONLY	SCALE NTS	DESIGN UNITS METRIC	THIRD ANGLE PROJECTION
		4 PLACES ± --- ± ---	3 PLACES ± --- ± ---	DRAWN BY MLONG	DATE 2000/05/10	TITLE DDR DIMM, 127MM PITCH 184 CKTS, SINGLE KEY	
		2 PLACES ± 0.15 ± ---	1 PLACE ± --- ± ---	CHECKED BY SQUEK	DATE 2000/05/11	MOLEX INCORPORATED	
		ANGULAR ± 3 °		APPROVED BY SKTOH	DATE 2000/05/12		
DRAFT WHERE APPLICABLE MUST REMAIN WITHIN DIMENSIONS		THIS DRAWING CONTAINS INFORMATION THAT IS PROPRIETARY TO MOLEX INCORPORATED AND SHOULD NOT BE USED WITHOUT WRITTEN PERMISSION					

9 8 7 6 5 4 3 2 1

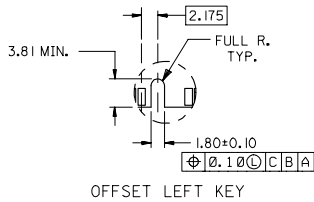
10	9	8	7	6	5	4	3	2	1
		PART NUMBER	DATUM VOLTAGE KEY	PACKAGING TYPE	DIM *T*	RECOMMENDED PCB THICKNESS	LATCH COLOR	CONTACT AREA PLATING	
		87636-2001	CENTER (1.8V)	TRAY	3.23	2.36	BEIGE	0.38uM/15uIN MIN. GOLD	
		87636-2002	LEFT (2.5V)						
		87636-2011	CENTER (1.8V)		2.67	1.57			
		87636-2012	LEFT (2.5V)						
		87636-3001	CENTER (1.8V)		3.23	2.36	BLACK	0.76uM/30uIN MIN. GOLD	
		87636-3002	LEFT (2.5V)						
		87636-3011	CENTER (1.8V)		2.67	1.57			
		87636-3012	LEFT (2.5V)						
		87636-2102	LEFT (2.5V)		3.23	2.36			

ADD DIMENSION EC NO: S2007-0163 DRAWN/CMO: 2006/08/17 CHKD/SHEIN: 2006/08/17 APPR/GGLEE: 2006/08/18	QUALITY SYMBOLS	GENERAL TOLERANCES (UNLESS SPECIFIED)		DIMENSION STYLE	SCALE	DESIGN UNITS	THIRD ANGLE PROJECTION
	$\nabla=0$ $\nabla=0$	mm	INCH	MM ONLY	NTS	METRIC	
		4 PLACES ± ---	± ---	LONG	DATE	TITLE	
		3 PLACES ± ---	± ---	CHECKED BY	DATE	DDR DIMM, 1.27MM PITCH 184 CKTS, SINGLE KEY	
	2 PLACES ± 0.15	± ---	SQUEK	DATE	MOLEX INCORPORATED		
	1 PLACE ± ---	± ---	APPROVED BY	DATE	MATERIAL NO.		
	ANGULAR ± 3 °		SKTOH	DATE	DOCUMENT NO.		
					SEE TABLE		
					SD-87636-001		
					SHEET NO.		
					3 OF 4		
					DRAFT WHERE APPLICABLE MUST REMAIN WITHIN DIMENSIONS		
					SIZE A3		
					THIS DRAWING CONTAINS INFORMATION THAT IS PROPRIETARY TO MOLEX INCORPORATED AND SHOULD NOT BE USED WITHOUT WRITTEN PERMISSION		

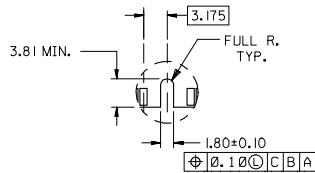


(OUTSIDE EDGE OF END PADS)

RECOMMENDED MODULE LAYOUT  
184 CKT 1.8V SHOWN



OFFSET LEFT KEY



CENTERED KEY

**NOTES:**

1. STRAIGHTNESS OF MODULE APPLIES TO THE AREA FROM THE BOTTOM OF THE CARD UP 4.00 MM.
2. IF TIE BARS ARE ATTACHED TO PADS, THE TIE BAR SHOULD BE ON AN INTERNAL LAYER, SO THAT THE REMNANT CANNOT CAUSE DAMAGE TO THE CONTACTS.

ADD DIMENSION EC NO: S2007-0163 2006/08/17 DRAWN/CMO CHKD/SHLEN APPR/GGLEE 2006/08/18	DESCRIPTION QUALITY SYMBOLS ▽=0 ▽=0	GENERAL TOLERANCES (UNLESS SPECIFIED)		DIMENSION STYLE MM ONLY	SCALE NTS	DESIGN UNITS METRIC	THIRD ANGLE PROJECTION		
		4 PLACES ± --- ± ---	INCH	DRAWN BY MLONG	DATE 2000/05/10	TITLE DDR DIMM, 127MM PITCH 184 CKTS, SINGLE KEY			
		3 PLACES ± --- ± ---	CHECKED BY SQUEK	DATE 2000/05/11	MOLEX INCORPORATED				
		2 PLACES ± 0.15 ± ---	APPROVED BY SKTOH	DATE 2000/05/12					
1 PLACE ± --- ± ---	ANGULAR ± 3 °	MATERIAL NO. SEE TABLE	DOCUMENT NO. SD-87636-001	SHEET NO. 4 OF 4					
DRAFT WHERE APPLICABLE MUST REMAIN WITHIN DIMENSIONS		THIS DRAWING CONTAINS INFORMATION THAT IS PROPRIETARY TO MOLEX INCORPORATED AND SHOULD NOT BE USED WITHOUT WRITTEN PERMISSION							