

Excellent Integrated System Limited

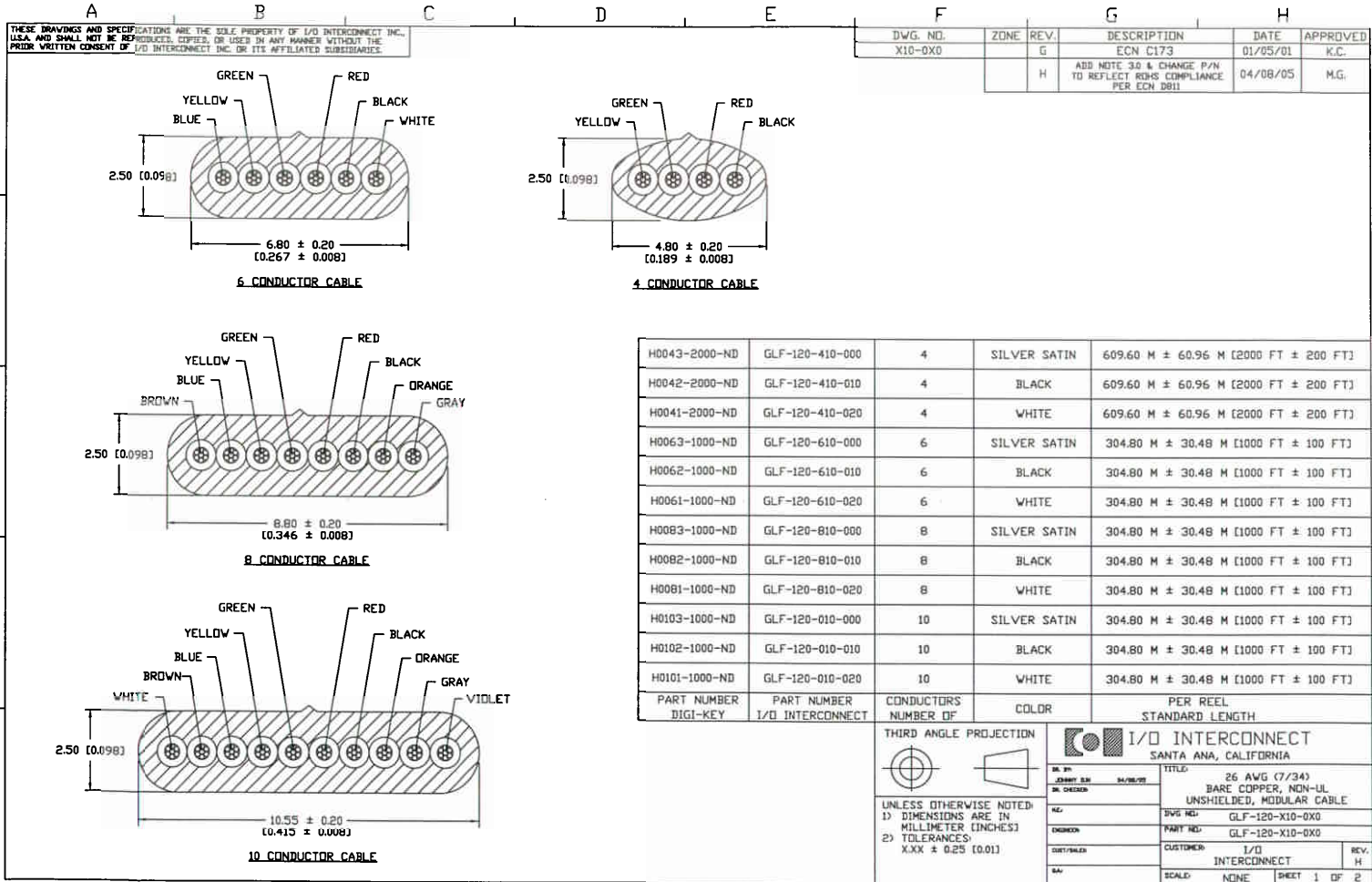
Stocking Distributor

Click to view price, real time Inventory, Delivery & Lifecycle Information:

[I/O Interconnect](#)
[GLF-120-010-000](#)

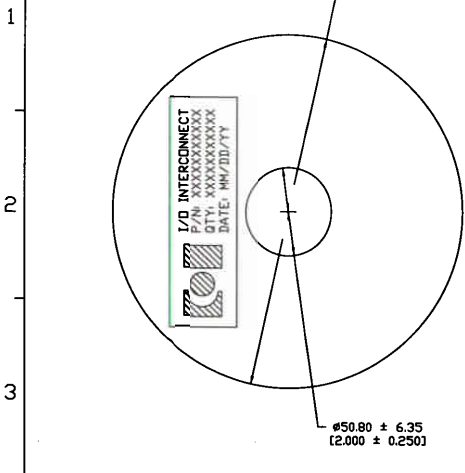
For any questions, you can email us directly:

sales@integrated-circuit.com

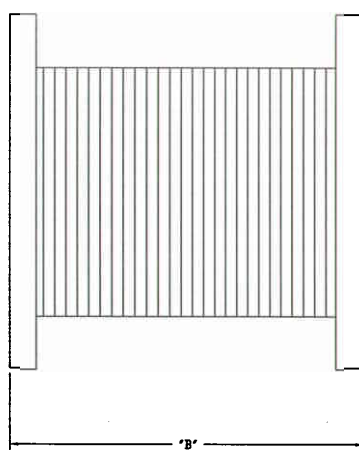


THESE DRAWINGS AND SPECIFICATIONS ARE THE SOLE PROPERTY OF I/O INTERCONNECT INC. U.S.A. AND SHALL NOT BE REPRODUCED, COPIED, OR USED IN ANY MANNER WITHOUT THE PRIOR WRITTEN CONSENT OF I/O INTERCONNECT INC. OR ITS AFFILIATED SUBSIDIARIES.

DWG. NO.	ZONE	REV.	DESCRIPTION	DATE	APPROVED
X10-0X0		G	ECN C173	01/05/01	K.C.
		H	ADD NOTE 3.0 & CHANGE P/N TO REFLECT ROHS COMPLIANCE PER ECN 0911	04/08/05	M.G.



Ø50.80 ± 6.35
(2.000 ± 0.250)



NOTES: UNLESS OTHERWISE SPECIFIED.

1.0 MATERIAL AND SPECIFICATIONS

- 1.01 CONDUCTORS: 26 AWG (7/34) STRANDED BARE COPPER.
- 1.02 INSULATION: POLYPROPYLENE
- 1.03 COLOR: PER CALLOUT

2.0 ELECTRICAL CHARACTERISTICS

- 2.01 TEMPERATURE & VOLTAGE RATING: 80°C 30 V
- 2.02 CONDUCTORS RESISTANCE: 148 OHMS/KM MAX. AT 20°C
- 2.03 INSULATION RESISTANCE: 100 MEGOHMS/KM MIN. AT 20°C
- 2.04 CAPACITANCE: 15 PF/FT (MAX)
- 2.05 DIELECTRIC TEST: AC-500V PER 1 MINUTE

2.0 PACKAGING SPECIFICATIONS

- 2.01 ADD LABEL ON REEL. (SEE LABEL IN FIGURE 1)
- 2.02 PLACE 2 CABLE REEL IN SHIPPING BOX. (SEE BOX SIZE.)
- 2.03 MARK BOX WITH PART NUMBER, QUANTITY, WEIGHT, AND PURCHASE ORDER NUMBER.

3.0 PART TO BE ROHS COMPLIANCE.



FIGURE 1: WHITE BACKGROUND WITH BLACK LETTERS

4	300.00 (11.811)	150.00 (5.906)	L=12.20' X W=12.20' X H=12.99'
6	250.00 (9.84)	150.00 (5.906)	L=9.84' X W=9.84' X H=12.99'
8	300.00 (11.811)	150.00 (5.906)	L=12.20' X W=12.20' X H=12.99'
10	300.00 (11.811)	180.00 (7.087)	L=12.20' X W=12.20' X H=8.66'
NUMBER OF CONDUCTOR	DIM "A" (REF.)	± 6.35 (0.250)	DIMENSIONS MAX. OUTSIDE SHIPPING BOX

THIRD ANGLE PROJECTION		I/O INTERCONNECT	
		SANTA ANA, CALIFORNIA	
UNLESS OTHERWISE NOTED: 1) DIMENSIONS ARE IN MILLIMETER (INCHES) 2) TOLERANCES: X.XX ± 0.25 (0.01)	DR. BY: _____ DR. CHECKED: _____ REV. _____ DATE/SCALE: _____	TITLE: 26 AWG (7/34) BARE COPPER, NON-UL UNSHIELDED, MODULAR CABLE DWG NO: GLF-120-X10-0X0 PART NO: GLF-120-X10-0X0 CUSTOMER: I/O INTERCONNECT SCALE: NONE	REV. H SHEET 2 OF 2