

Excellent Integrated System Limited

Stocking Distributor

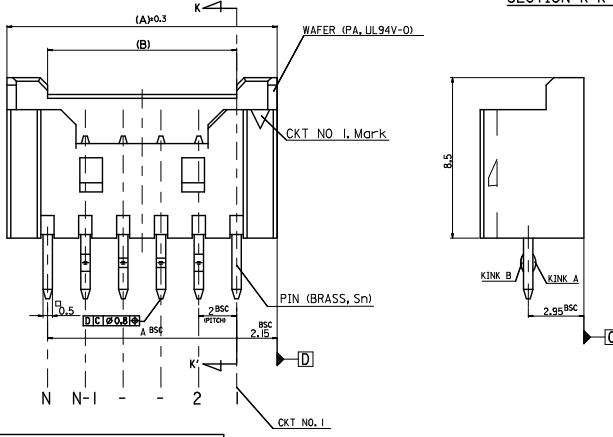
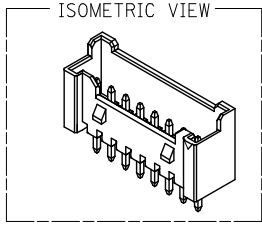
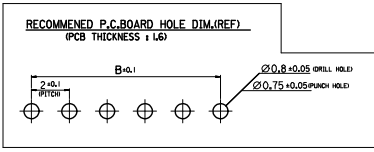
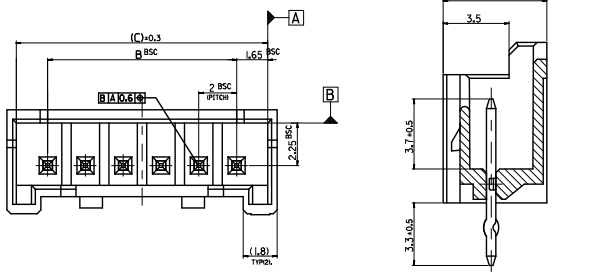
Click to view price, real time Inventory, Delivery & Lifecycle Information:

[Molex Connector Corporation](#)
[0353620750](#)

For any questions, you can email us directly:

sales@integrated-circuit.com

10 9 8 7 6 5 4 3 2 1



LEGEND

SD-35362-****
CKT NO. _____ COLOR _____

FINAL GOOD (BULK) 5 : SELECTIVE KINK (LEAD FREE) 6 : NONE KINK (LEAD FREE)

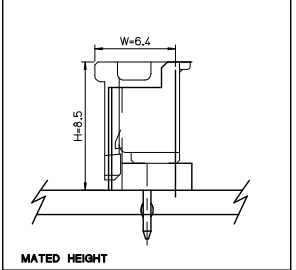
SUB ASSY (TUBE) 7 : SELECTIVE KINK (LEAD FREE) 8 : NONE KINK (LEAD FREE)

COLOR
0 : NATURAL
1 : BLACK
2 : RED
3 : YELLOW
4 : BLUE
5 : GREEN
6 : TUBE PACKING (Natural Color)
7 : TUBE PACKING (Red Color)
8 : TUBE PACKING (Blue Color)

- NOTES**
- MATERIAL : UNFILLED POLYAMIDE, UL94V-0
PIN : BRASS
 - FINISHES : PIN : Ti/Sn 1-3µm OVERALL
 - PRODUCT SPECIFICATION : PS-35507-003
 - MATING HOUSING : 35507-***0*
 - MATING TERMINAL : 50212-8000
 - KINK

31.3	28	32.3	3536215**	35362-15**	I5
29.3	26	30.3	3536214**	35362-14**	I4
27.3	24	28.3	3536213**	35362-13**	I3
25.3	22	26.3	3536212**	35362-12**	I2
23.3	20	24.3	3536211**	35362-11**	I1
21.3	18	22.3	3536210**	35362-10**	I0
19.3	16	20.3	3536209**	35362-09**	9
17.3	14	18.3	3536208**	35362-08**	8
15.3	12	16.3	3536207**	35362-07**	7
13.3	10	14.3	3536206**	35362-06**	6
11.3	8	12.3	3536205**	35362-05**	5
9.3	6	10.3	3536204**	35362-04**	4

CKT NO	1	2	3	4	5	N-2	N-1	N
6 CKT OVER	-	A	B	-	-	B	A	-
5 CKT	A	B	-	B	A			
4 CKT	A	B	B	A				



LEAD FREE

30 over	±0.3
10 over 30 under	±0.25
10 under	±0.2
ANGLE	±3°
GENERAL TOLERANCE	

REVISED
EC. NO. : KOR2015-0019
DRAWN BY : M01
CHKD BY : SKM
APPR. : YJM

2014/08/25
2014/08/26
2014/09/03

QUALITY SYMBOLS

▽=0
▽=0
▽=0

GENERAL TOLERANCES (UNLESS SPECIFIED)

	mm	INCH
4 PLACES	±---	±---
3 PLACES	±---	±---
2 PLACES	±---	±---
1 PLACE	±---	±---
0 PLACE	±	±

ANGULAR ±---°

DRAFT WHERE APPLICABLE MUST REMAIN WITHIN DIMENSIONS

DIMENSION STYLE: MM ONLY

SCALE: 5:1

DESIGN UNITS: METRIC

THIRD ANGLE PROJECTION

DRAWN BY: YS00KIM DATE: 1996/09/11
CHECKED BY: DATE: 1996/09/11
APPROVED BY: DATE:

2.0 W/B WAFER ASS'Y
-LEAD FREE-

molex

DOCUMENT NO. SD-35362-002

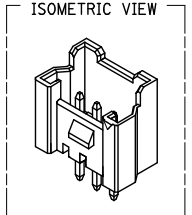
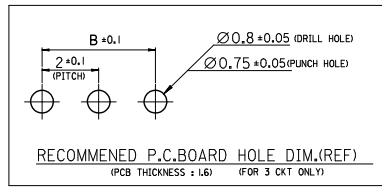
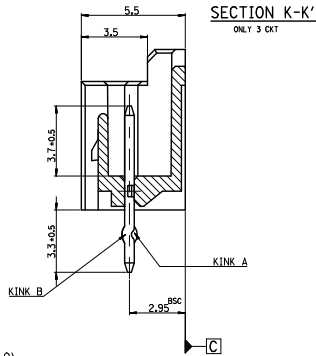
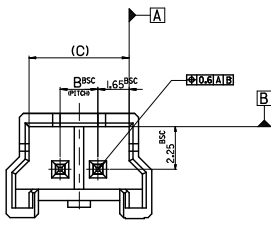
SHEET NO. 1 OF 1

THIS DRAWING CONTAINS INFORMATION THAT IS PROPRIETARY TO MOLEX INCORPORATED AND SHOULD NOT BE USED WITHOUT WRITTEN PERMISSION

9 8 7 6 5 4 3 2 1

10 9 8 7 6 5 4 3 2 1

FOR 2 & 3 CKTS.



LEGEND

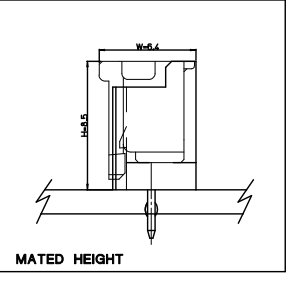
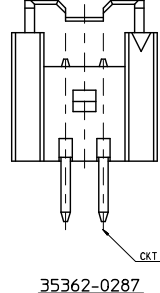
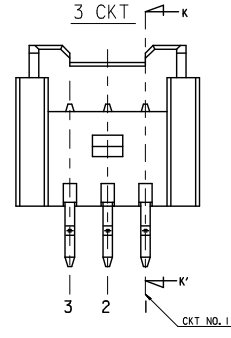
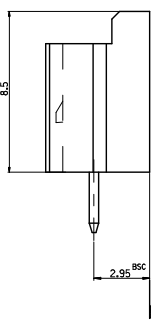
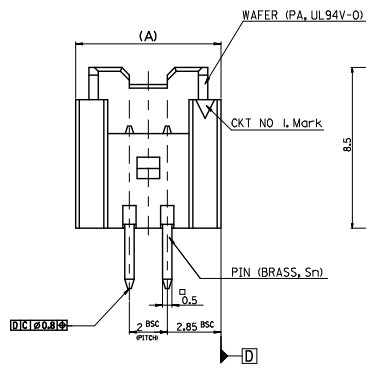
SD-35362-***		COLOR
FINAL GOOD (BULK)	5 + SELECTIVE KINK (LEAD FREE)	0 : NATURAL
	6 + NONE KINK (LEAD FREE)	1 : BLACK
SUB ASSY (TUBE)	7 + SELECTIVE KINK (LEAD FREE)	2 : RED
	8 + NONE KINK (LEAD FREE)	3 : YELLOW
		4 : BLUE
		5 : GREEN
		6 : TUBE PACKING (Natural Color)
		7 : TUBE PACKING (Red Color)
		8 : TUBE PACKING (Blue Color)

NOTES

- MATERIAL : UNFILLED POLYAMIDE, UL94V-0
PIN : BRASS
- FINISHES : PIN : Tin(Sn) 1-34um OVERALL
- PRODUCT SPECIFICATION : PS-35507-003
- MATING HOUSING : 35507-***0
MATING TERMINAL : 50212-8000
- KINK

CKT NO	1	2	3
2 CKT			
3 CKT	A	B	A

CKT NO	1	2
PRODUCT NO.	A	B
35362-0287		



7.3	4	9.7	3536203**	35362-03**	3
5.3	2	7.7	3536202**	35362-02**	2
(C)	B	(A)	MATERIAL NO.	ENG. NO.	CKT

LEAD FREE	
30 over	±0.3
10 over 30 under	±0.25
10 under	±0.2
ANGLE	±3°
GENERAL TOLERANCE	

REVISED	EC NO: KOR2015-0019	2014/08/25
DRW	DRW: YKIM	2011/08/26
CHK	CHK: KSKIM	2011/08/26
APP	APP: TSKIM02	2014/09/03

QUALITY SYMBOLS	GENERAL TOLERANCES (UNLESS SPECIFIED)	DIMENSION STYLE	SCALE	DESIGN UNITS	THIRD ANGLE PROJECTION
√=0	mm INCH	MM ONLY	5:1	METRIC	THIRD ANGLE PROJECTION
√=0	4 PLACES ± --- ± ---	DRAWN BY	DATE	TITLE	2.0 W/B WAFER ASSY -LEAD FREE-
√=0	3 PLACES ± --- ± ---	YSOOKIM	1996/09/11		
	2 PLACES ± --- ± ---	CHECKED BY	DATE		
	1 PLACE ± --- ± ---	JKOH	1996/09/11		
	0 PLACE ± --- ± ---	APPROVED BY	DATE		
	ANGULAR ± --- °	MATERIAL NO.	DOCUMENT NO.		
	DRAFT WHERE APPLICABLE MUST REMAIN WITHIN DIMENSIONS	SEE TABLE	SD-35362-002		
		SIZE A3			

MATERIAL NO.	35362-0287	DOCUMENT NO.	SD-35362-002	SHEET NO.	1 OF 1
--------------	------------	--------------	--------------	-----------	--------

9 8 7 6 5 4 3 2 1