

Excellent Integrated System Limited

Stocking Distributor

Click to view price, real time Inventory, Delivery & Lifecycle Information:

[Cinch Connectivity Solutions](#)

[CPN688](#)

For any questions, you can email us directly:

sales@integrated-circuit.com

4

3

2

1

受控 CONTROLLED DOCUMENT

编号 P/N	CPN688-CUST	版本 Rev	01	日期 Rel'd Date	SEP 14,09
-----------	-------------	-----------	----	------------------	-----------

Description: N crimp plug RG8
 Part No: CPN688
 Application: For RG8 Cable
 Crimp Tool: 24-313
 Impedance: 50 Ohms
 Frequency Range: 0-11 GHz
 Material: Crimp Sleeve Brass Nickel plated
 Contact Brass Ni/Au plated
 Body Brass Nickel plated
 Coupling Nut Brass Nickel plated
 RoHS Compliance: Yes
 Technical Detail: Refer to Emerson Document P/N 26-0000



DRAWING NO. CPN688-CUST	
REVISIONS	
01	OFFICIAL RELEASE
08-17-09	J J W T Betty 2009.09.02 010853.22 +0800E

D

D

C

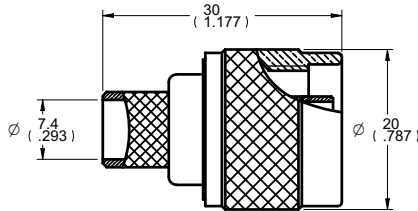
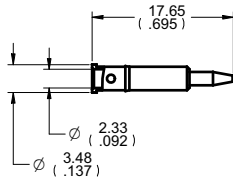
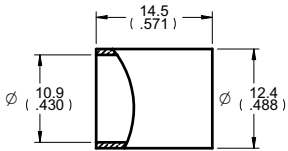
C

B

B

A

A



DIM OUTLINE

TOLERANCE UNLESS OTHERWISE SPECIFIED	DRAWN BY JEAN JIN	DATE 08-17-09
DECIMALS	CHECKED BY TERRY.W	DATE 08-17-09
X	APPROVED BY THOMAS	DATE 08-17-09
XX		
X.XX		
ANGLES	U/M	mm

CUSTOMER COPY



TITLE
N CRIMP PLUG RG8

THIS DRAWING WAS PRODUCED BY COMPUTER.
DO NOT SCALE DRAWING OR UPDATE MANUALLY.

SHEET 1 OF 1	DRAWING NO. CPN688-CUST	SIZE A
-----------------	----------------------------	-----------

5

4

3

2

1