

Excellent Integrated System Limited

Stocking Distributor

Click to view price, real time Inventory, Delivery & Lifecycle Information:

[EPCOS \(TDK\)](#)
[B39321B3765Z810](#)

For any questions, you can email us directly:

sales@integrated-circuit.com



SAW Components

Data Sheet B3765

Data Sheet

A large, stylized, 3D-rendered version of the EPCOS logo is shown in a dark, grayscale environment. The logo is tilted and appears to be glowing or emitting light, with a globe-like texture in the background.



| | |
|------------------------|-------------------|
| SAW Components | B3765 |
| Low-loss Filter | 315,50 MHz |

Data Sheet

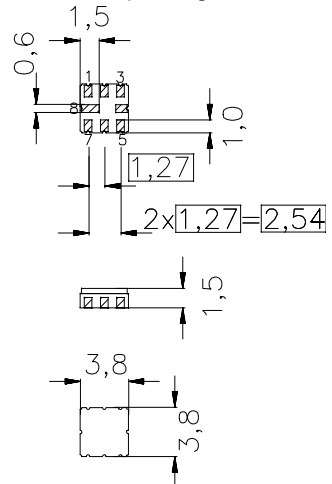
Features

- RF low-loss filter for remote control receivers
- Package for Surface Mounted Technology (SMT)
- Balanced and unbalanced operation possible
- Passivation layer: Elpas

Terminals

- Ni, gold plated

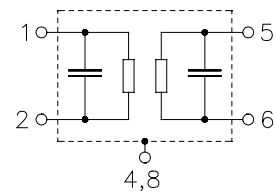
Ceramic package QCC8B



typ. dimensions in mm, approx. weight 0,07 g

Pin configuration¹⁾

- 1 Input Ground (recommended) or Input
- 2 Input (recommended) or Input Ground
- 5 Output (recommended) or Output Ground
- 6 Output Ground (recommended) or Output
- 4,8 Case - Ground
- 3,7 to be grounded



| Type | Ordering code | Marking and package according to | Packing according to |
|-------|-------------------|----------------------------------|----------------------|
| B3765 | B39321-B3765-Z810 | C61157-A7-A46 | F61074-V8167-Z000 |

Electrostatic Sensitive Device (ESD)

Maximum ratings

| | | | | |
|----------------------------|-----------|----------|-----|-----------------------|
| Operable temperature range | T_A | -45/+120 | °C | |
| Storage temperature range | T_{stg} | -45/+120 | °C | |
| DC voltage | V_{DC} | 6 | V | |
| Source power | P_S | 10 | dBm | source impedance 50 Ω |

¹⁾ The recommended pin configuration usually offers best suppression of electrical crosstalk. The filter characteristics refer to this configuration.



| | |
|------------------------|-------------------|
| SAW Components | B3765 |
| Low-loss Filter | 315,50 MHz |

Data Sheet

Characteristics

Reference temperature: $T_A = -45 \dots +95^\circ \text{C}$
 Terminating source impedance: $Z_S = 50 \Omega$ and matching network
 Terminating load impedance: $Z_L = 50 \Omega$ and matching network

| | | min. | typ. | max. | |
|--|-----------------------|------|---------------------|------|------------------------------|
| Center frequency (center frequency between 3 dB points) | f_c | — | 315,50 | — | MHz |
| Minimum insertion attenuation (including losses in matching network) | α_{\min} | | | | |
| 315,35 ... 315,65 MHz | | — | 1,9 | 2,9 | dB |
| Pass band (relative to α_{\min}) | | | | | |
| 315,35 ... 315,65 MHz | | — | 0,5 | 2,0 | dB |
| 315,32 ... 315,68 MHz | | — | 0,7 | 3,0 | dB |
| 314,28 ... 315,72 MHz | | — | 1,0 | 6,0 | dB |
| Pass bandwidth | | | | | |
| $\alpha_{\text{rel}} \leq 3 \text{ dB}$ | | 0,54 | 0,59 | 0,64 | MHz |
| Relative attenuation (relative to α_{\min}) | α_{rel} | | | | |
| 10,00 ... 295,00 MHz | | 48 | 53 | — | dB |
| 295,00 ... 305,00 MHz | | 45 | 50 | — | dB |
| 305,00 ... 313,30 MHz | | 25 | 30 | — | dB |
| 313,30 ... 313,70 MHz | | 33 | 40 | — | dB |
| 313,70 ... 314,80 MHz | | 13 | 18 | — | dB |
| 316,20 ... 323,50 MHz | | 13 | 17 | — | dB |
| 323,50 ... 335,50 MHz | | 38 | 45 | — | dB |
| 335,50 ... 600,00 MHz | | 43 | 48 | — | dB |
| 600,00 ... 1000,00 MHz | | 60 | 70 | — | dB |
| Impedance for pass band matching ¹⁾ | | | | | |
| Input: $Z_{\text{IN}} = R_{\text{IN}} \parallel C_{\text{IN}}$ | | — | 340 \parallel 2,6 | — | $\Omega \parallel \text{pF}$ |
| Output: $Z_{\text{OUT}} = R_{\text{OUT}} \parallel C_{\text{OUT}}$ | | — | 340 \parallel 2,6 | — | $\Omega \parallel \text{pF}$ |

¹⁾ Impedance for passband matching bases on an ideal, perfect matching of the SAW filter to source- and to load impedance (here 50 Ohm). After the SAW filter is removed and input impedance into the input matching / output matching network is calculated.

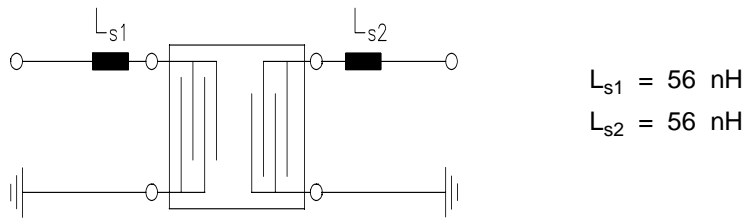
The conjugate complex value of these characteristic impedances are the input and output impedances for flat passband. For more details, we refer to EPCOS application note #4.



| | |
|------------------------|-------------------|
| SAW Components | B3765 |
| Low-loss Filter | 315,50 MHz |

Data Sheet

Matching network to 50 Ω (element values depend on pcb layout and equivalent circuit)



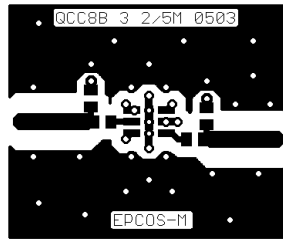
Minimising the crosstalk

For a good ultimate rejection a low crosstalk is necessary. Low crosstalk can be realised with a good RF layout. The major crosstalk mechanism is caused by the “ground-loop” problem.

Grounding loops are created if input-and output transducer GND are connected on the top-side of the PCB and fed to the system grounding plane by a common via hole. To avoid the common ground path, the ground pin of the input- and output transducer are fed to the system ground plane (bottom PCB plane) by their own via hole. The transducers’ grounding pins should be isolated from the upper grounding plane.

A common GND inductivity of 0.5nH degrades the ultimate rejection (crosstalk) by 20dB.

The optimised PCB layout, including matching network for transformation to 50 Ohm, is shown here. In this PCB layout the grounding loops are minimised to realise good ultimate rejection.



Optimised PCB layout for SAW filters in QCC8B package, pinning 2,5 (top side, scale 1:1)

The bottom side is a copper plane (system ground area). The input and output grounding pins are isolated and connected to the common ground by separated via holes.

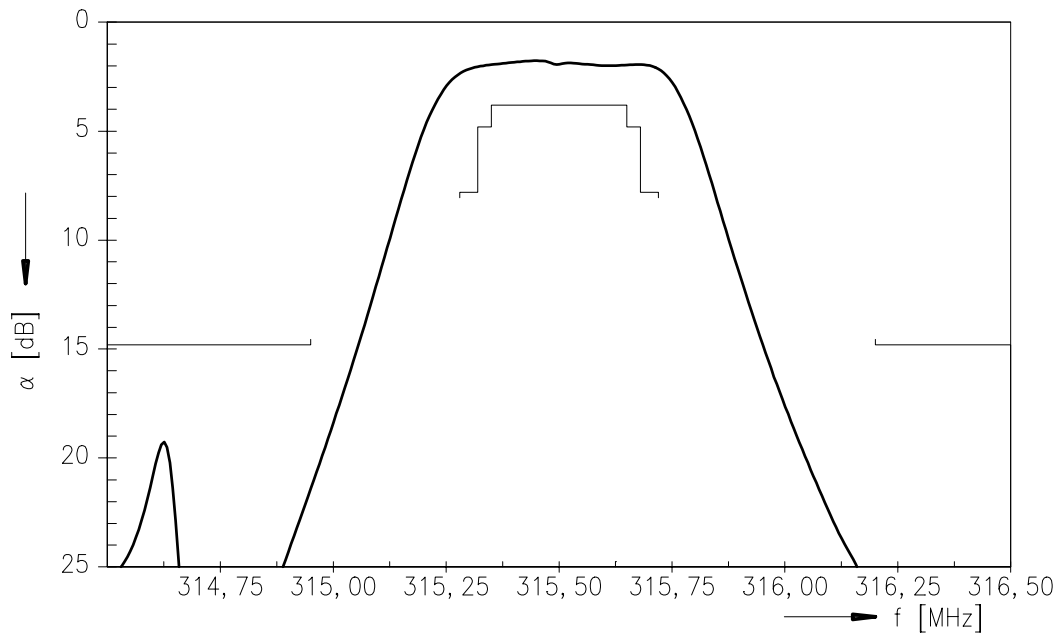
For good contact of the upper grounding area with the lower side it is necessary to place enough via holes.



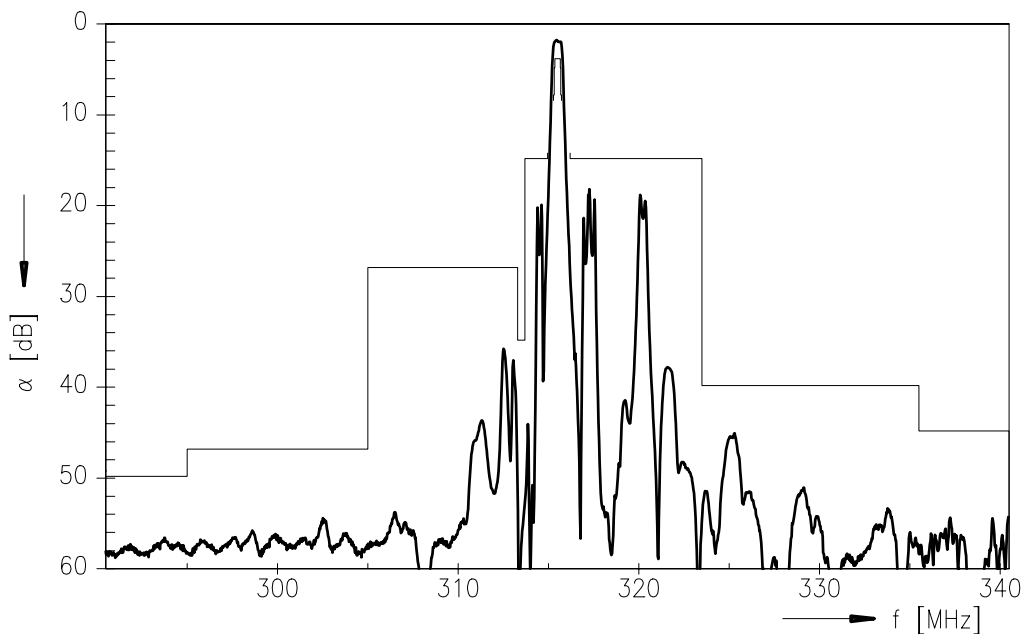
| | |
|------------------------|-------------------|
| SAW Components | B3765 |
| Low-loss Filter | 315,50 MHz |

Data Sheet

Frequency response



Frequency response (wideband)

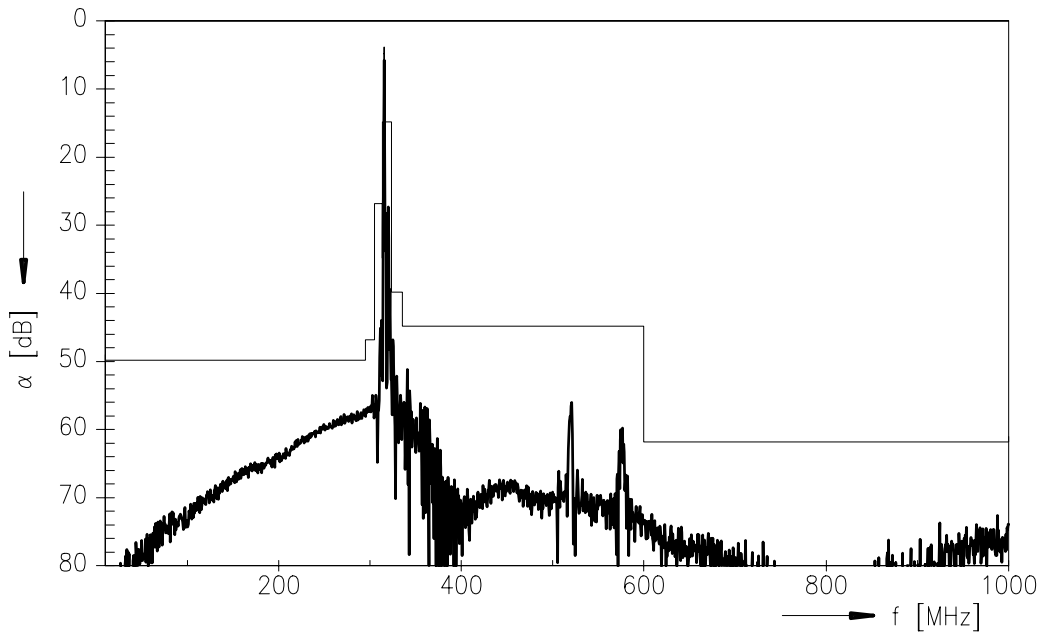




| | |
|------------------------|-------------------|
| SAW Components | B3765 |
| Low-loss Filter | 315,50 MHz |

Data Sheet

Frequency response (ultimate rejection)



Published by EPCOS AG
Surface Acoustic Wave Components Division, SAW CE AE PD
P.O. Box 80 17 09, D-81617 München

© EPCOS AG 2004. All Rights Reserved. Reproduction, publication and dissemination of this brochure and the information contained therein without EPCOS' prior express consent is prohibited.

The information contained in this brochure describes the type of component and shall not be considered as guaranteed characteristics. Purchase orders are subject to the General Conditions for the Supply of Products and Services of the Electrical and Electronics Industry recommended by the ZVEI (German Electrical and Electronic Manufacturers' Association), unless otherwise agreed.

This brochure replaces the previous edition.

For questions on technology, prices and delivery please contact the Sales Offices of EPCOS AG or the international Representatives.

Due to technical requirements components may contain dangerous substances. For information on the type in question please also contact one of our Sales Offices.