



**Distributor of Molex Connector Corporation: Excellent Integrated System Limited**  
Datasheet of 0009483106 - Connector Receptacle 10 Position 0.156" (3.96mm) Gold Through Hole

Contact us: [sales@integrated-circuit.com](mailto:sales@integrated-circuit.com) Website: [www.integrated-circuit.com](http://www.integrated-circuit.com)

---

## **Excellent Integrated System Limited**

Stocking Distributor

Click to view price, real time Inventory, Delivery & Lifecycle Information:

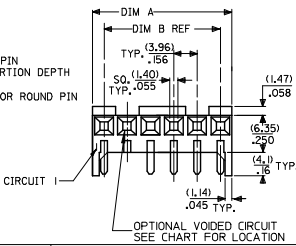
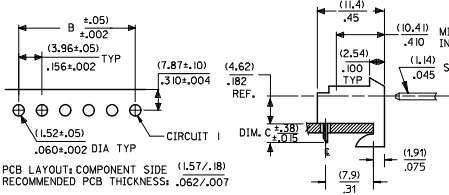
[Molex Connector Corporation](#)  
[0009483106](#)

For any questions, you can email us directly:  
[sales@integrated-circuit.com](mailto:sales@integrated-circuit.com)

Contact us: [sales@integrated-circuit.com](mailto:sales@integrated-circuit.com) Website: [www.integrated-circuit.com](http://www.integrated-circuit.com)

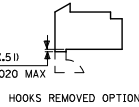
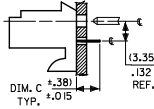
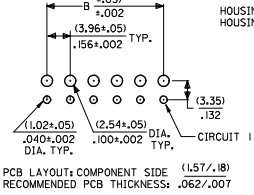
RIGHT ANGLE

HOUSING: 41815-N-AN-\*\* (WITH RAMP)  
 HOUSING: 41815-N-DN-\*\* (WITHOUT RAMP)



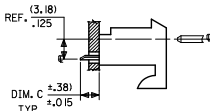
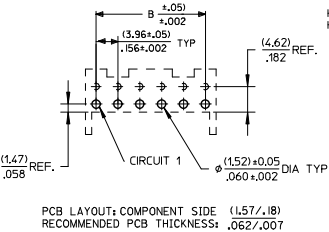
BOTTOM ENTRY

HOUSING: 41815-N-AN-\*\* (WITH RAMP)  
 HOUSING: 41815-N-DN-\*\* (WITHOUT RAMP)



TOP ENTRY

HOUSING: 41815-N-AN-\*\* (WITH RAMP)  
 HOUSING: 41815-N-DN-\*\* (WITHOUT RAMP)



DIM. B	DIM. A	NO. OF CKTS
(3.96)	(1.02±.25)	2
.156	.408±.010	2
(7.92)	(1.179±.25)	3
.312	.464±.010	3
(11.89)	(1.15±.25)	4
.468	.620±.010	4
(15.85)	(1.17±.25)	5
.624	.776±.010	5
(19.81)	(2.347±.25)	6
.780	.932±.010	6
(23.77)	(2.764±.30)	7
.936	1.088±.012	7
(27.74)	(3.161±.25)	8
1.092	1.244±.012	8
(31.70)	(3.556±.30)	9
1.248	1.400±.012	9
(35.66)	(3.952±.30)	10
1.404	1.556±.012	10
(39.62)	(4.348±.30)	11
1.560	1.712±.012	11
(43.59)	(4.745±.30)	12
1.716	1.868±.012	12
(47.55)	(5.141±.30)	13
1.872	2.024±.012	13
(51.51)	(5.537±.36)	14
2.028	2.180±.014	14
(55.47)	(5.933±.36)	15
2.184	2.336±.014	15

- NOTES:  
 1. MATERIAL: HOUSING: POLYESTER, RATED UL 94V-0. COLOR: NATURAL (WHITE)  
 2. FINISH:  
 (197) = OVERALL REFLOWED MATTE TIN: 0.00152/.000060 MIN OVER 0.00127/.000050 MIN NICKEL.  
 (208) = SELECT GOLD: 0.00038/.000015 MIN. SELECT TIN: 0.00254/.000100 MIN. OVERALL NICKEL UNDERPLATE: 0.00127/.000050 MIN.  
 (228) = SELECT GOLD: 0.00076/.000030 MIN. SELECT TIN: 0.00254/.000100 MIN. OVERALL NICKEL UNDERPLATE: 0.00127/.000050 MIN.  
 (909) = OVERALL TIN: 0.00254/.000100 MIN.  
 3. PRODUCT SPECIFICATION: PS-08-50  
 4. PACKAGING: SEE CHARTS  
 5. FOR TOP ENTRY AND RIGHT ANGLE ASSEMBLIES WITH LOWER INSERTION FORCE USE SINGLE BEAM CONTACT, (TERMINAL NO. 4244)  
 6. SOLDERABILITY: WHEN PARTS ARE SOLDERED AT A TEMPERATURE OF 230°C (446°F) FOR 5 SECONDS EACH SOLDERED SURFACE SHALL BE A MINIMUM OF 95% COVERED WITH A SMOOTH CONTINUOUS ADHERENT COATING. FOR ADDITIONAL INFORMATION SEE SMES-152.  
 7. PARTS ARE STACKABLE END TO END ON (3.96)/.156 CENTERLINE.  
 8. THIS PART CONFORMS TO CLASS B REQUIREMENTS OF COSMETIC SPEC PS-45499-002.

PCB LAYOUT: COMPONENT SIDE (1.57/.18)  
 RECOMMENDED PCB THICKNESS: .062/.007

QUALITY SYMBOLS	GENERAL TOLERANCES (UNLESS SPECIFIED)		DIMENSION STYLE		SCALE	DESIGN UNITS	THIRD ANGLE PROJECTION
	mm	INCH	MM/IN	DATE			
$\nabla=0$	4 PLACES ±	±	SAMIEC	01/28/87	TITLE	INCH	KK 156 HOUSING PCB 41815 SERIES
$\nabla=0$	3 PLACES ±	±.010	CHECKED BY	DATE			
$\nabla=0$	2 PLACES ±	±.015	SAMIEC	01/28/87			
$\nabla=0$	1 PLACE ±	±.038	APPROVED BY	DATE			
$\nabla=0$	0 PLACE ±	±	LENZ	01/28/87			
ANGULAR ±1/2° DRAFT WHERE APPLICABLE MUST REMAIN WITHIN DIMENSIONS			MATERIAL NO. SEE CHART		DOCUMENT NO.	molex SDA-41815	
			SIZE B		THIS DRAWING CONTAINS INFORMATION THAT IS PROPRIETARY TO MOLEX INCORPORATED AND SHOULD NOT BE USED WITHOUT WRITTEN PERMISSION		