



Distributor of Molex Connector Corporation: Excellent Integrated System Limited
Datasheet of 0391001103 - Connector Eurostyle Terminal Strip Strip 3 Circuit 0.394"
(10.00mm)

Contact us: sales@integrated-circuit.com Website: www.integrated-circuit.com

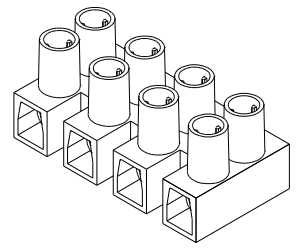
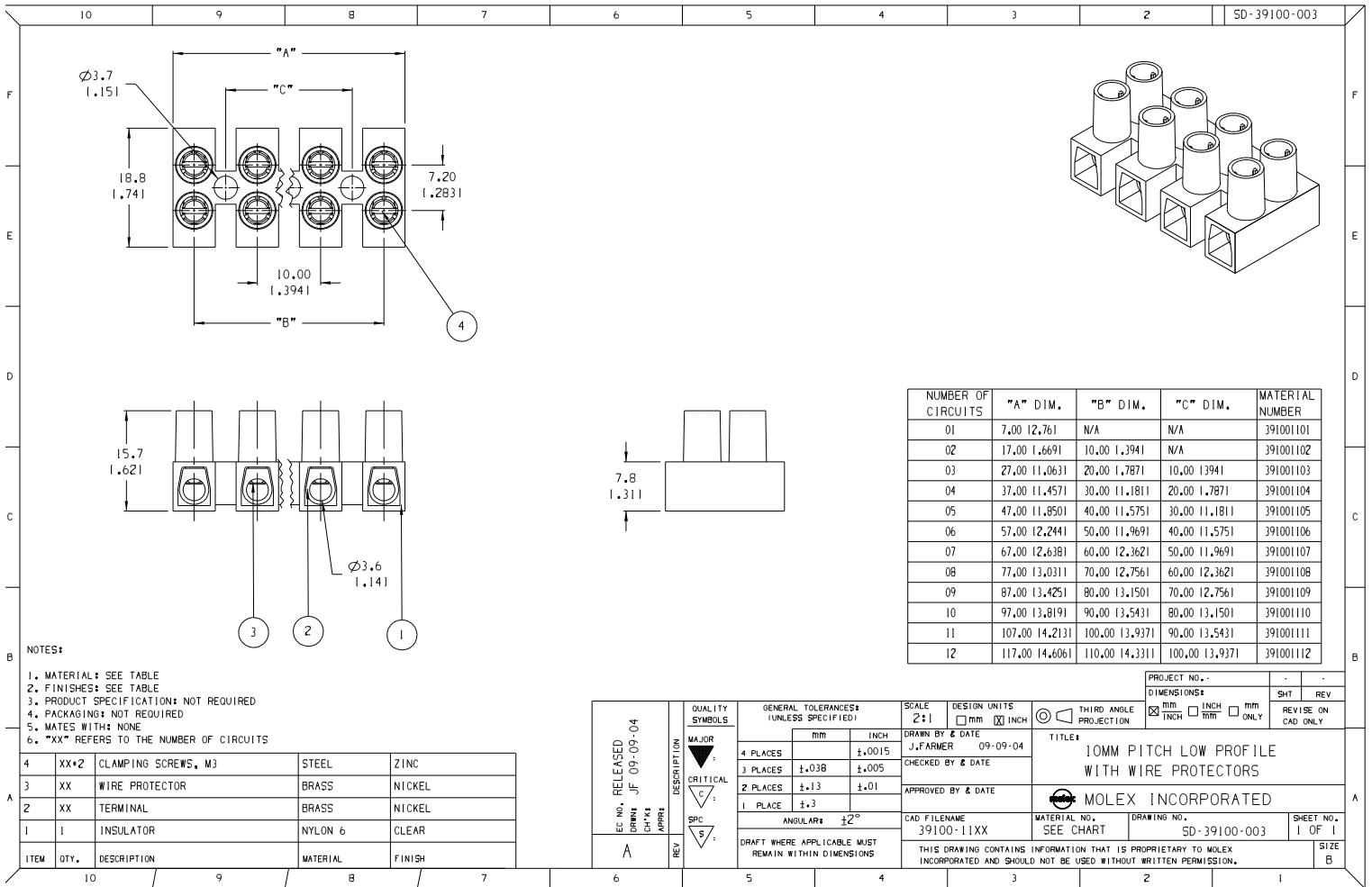
Excellent Integrated System Limited

Stocking Distributor

Click to view price, real time Inventory, Delivery & Lifecycle Information:

[Molex Connector Corporation](#)
[0391001103](#)

For any questions, you can email us directly:
sales@integrated-circuit.com



NUMBER OF CIRCUITS	"A" DIM.	"B" DIM.	"C" DIM.	MATERIAL NUMBER
01	7.00 12.761	N/A	N/A	391001101
02	17.00 1.6691	10.00 1.3941	N/A	391001102
03	27.00 11.0631	20.00 1.7871	10.00 1.3941	391001103
04	37.00 11.4571	30.00 1.1811	20.00 1.7871	391001104
05	47.00 11.8501	40.00 11.5751	30.00 1.1811	391001105
06	57.00 12.2441	50.00 11.9691	40.00 11.5751	391001106
07	67.00 12.6381	60.00 12.3621	50.00 11.9691	391001107
08	77.00 13.0311	70.00 12.7561	60.00 12.3621	391001108
09	87.00 13.4251	80.00 13.1501	70.00 12.7561	391001109
10	97.00 13.8191	90.00 13.5431	80.00 13.1501	391001110
11	107.00 14.2131	100.00 13.9371	90.00 13.5431	391001111
12	117.00 14.6061	110.00 14.3311	100.00 13.9371	391001112

- NOTES:
1. MATERIAL: SEE TABLE
 2. FINISHES: SEE TABLE
 3. PRODUCT SPECIFICATIONS: NOT REQUIRED
 4. PACKAGING: NOT REQUIRED
 5. MATES WITH: NONE
 6. "XX" REFERS TO THE NUMBER OF CIRCUITS

ITEM	QTY.	DESCRIPTION	MATERIAL	FINISH
4	XX*2	CLAMPING SCREWS, M3	STEEL	ZINC
3	XX	WIRE PROTECTOR	BRASS	NICKEL
2	XX	TERMINAL	BRASS	NICKEL
1	1	INSULATOR	NYLON 6	CLEAR

EC NO. RELEASED DRWG. JF 09-09-04 CH-XX APPROV.	QUALITY SYMBOLS	GENERAL TOLERANCES* (UNLESS SPECIFIED)	SCALE 2:1	DESIGN UNITS <input type="checkbox"/> mm <input checked="" type="checkbox"/> INCH	THIRD ANGLE PROJECTION	PROJECT NO. -	SHT -	REV -
	MAJOR	4 PLACES ±.0015	DRAWN BY & DATE J.J.FARMER 09-09-04	TITLE: 10MM PITCH LOW PROFILE WITH WIRE PROTECTORS	<input checked="" type="checkbox"/> INCH <input type="checkbox"/> mm ONLY	REVISE ON CAD ONLY		
	CRITICAL	3 PLACES ±.038 ±.005	CHECKED BY & DATE	APPROVED BY & DATE	MOLEX INCORPORATED			
	MINOR	2 PLACES ±.13 ±.01	CAD FILENAME 39100-11XX	MATERIAL NO. SEE CHART	DRAWING NO. SD-39100-003	SHEET NO. 1 OF 1		
REV A	ANGULAR ±2°	DRAFT WHERE APPLICABLE MUST REMAIN WITHIN DIMENSIONS	THIS DRAWING CONTAINS INFORMATION THAT IS PROPRIETARY TO MOLEX INCORPORATED AND SHOULD NOT BE USED WITHOUT WRITTEN PERMISSION.					