

Excellent Integrated System Limited

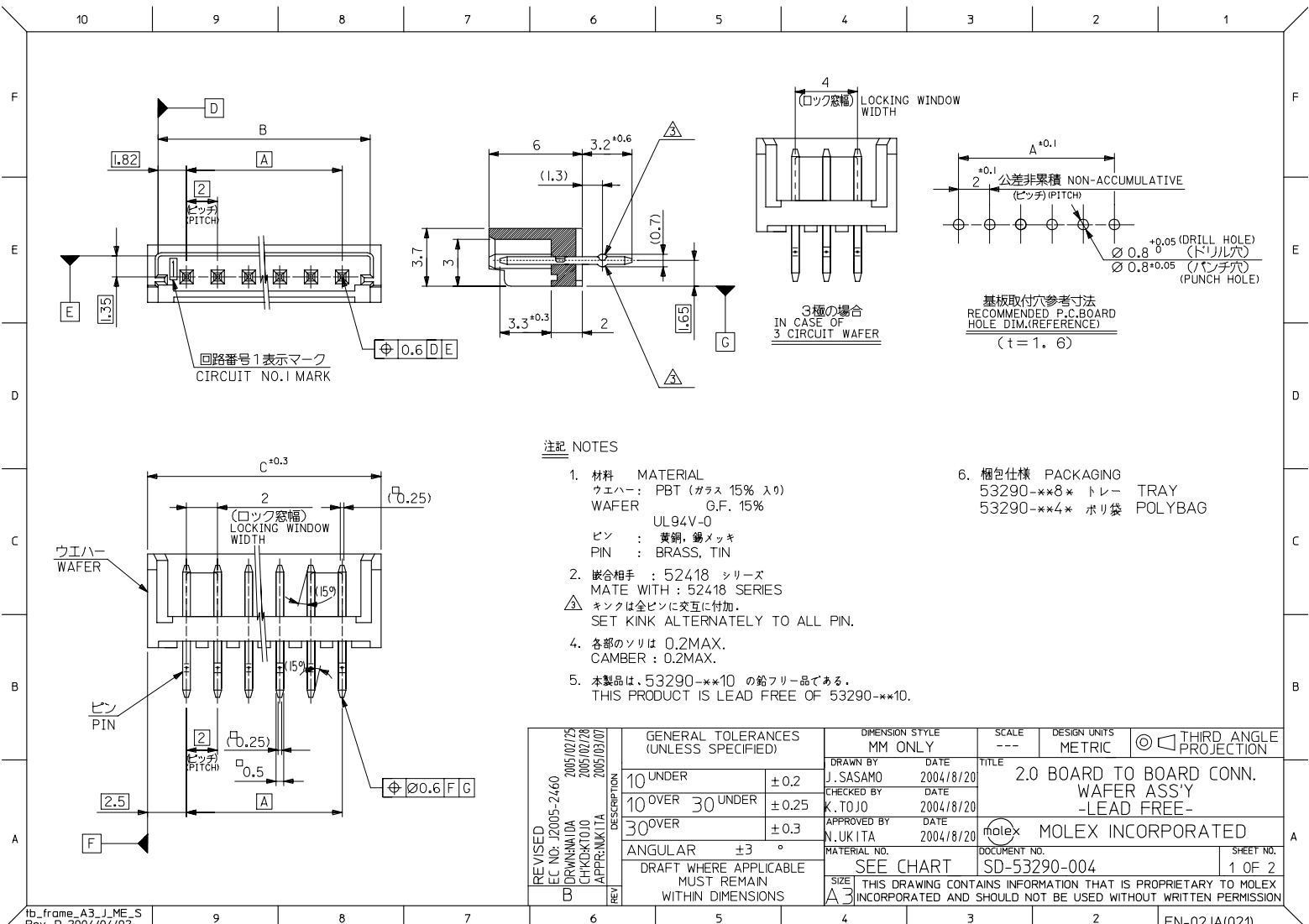
Stocking Distributor

Click to view price, real time Inventory, Delivery & Lifecycle Information:

[Molex Connector Corporation](#)
[53290-1480](#)

For any questions, you can email us directly:

sales@integrated-circuit.com



10 9 8 7 6 5 4 3 2 1

F
E
D
C
B
A

F
E
D
C
B
A

| | | | | | | | |
|----|-------|----|--|------------|---|------------|------------|
| 43 | 41.64 | 38 | 53290-2041 | 53290-2081 | 53290-2040 | 53290-2080 | 20 |
| 41 | 39.64 | 36 | -1941 | -1981 | -1940 | -1980 | 19 |
| 39 | 37.64 | 34 | -1841 | -1881 | -1840 | -1880 | 18 |
| 37 | 35.64 | 32 | -1741 | -1781 | -1740 | -1780 | 17 |
| 35 | 33.64 | 30 | -1641 | -1681 | -1640 | -1680 | 16 |
| 33 | 31.64 | 28 | -1541 | -1581 | -1540 | -1580 | 15 |
| 31 | 29.64 | 26 | -1441 | -1481 | -1440 | -1480 | 14 |
| 29 | 27.64 | 24 | -1341 | -1381 | -1340 | -1380 | 13 |
| 27 | 25.64 | 22 | -1241 | -1281 | -1240 | -1280 | 12 |
| 25 | 23.64 | 20 | -1141 | -1181 | -1140 | -1180 | 11 |
| 23 | 21.64 | 18 | -1041 | -1081 | -1040 | -1080 | 10 |
| 21 | 19.64 | 16 | -0941 | -0981 | -0940 | -0980 | 9 |
| 19 | 17.64 | 14 | -0841 | -0881 | -0840 | -0880 | 8 |
| 17 | 15.64 | 12 | -0741 | -0781 | -0740 | -0780 | 7 |
| 15 | 13.64 | 10 | -0641 | -0681 | -0640 | -0680 | 6 |
| 13 | 11.64 | 8 | -0541 | -0581 | -0540 | -0580 | 5 |
| 11 | 9.64 | 6 | -0441 | -0481 | -0440 | -0480 | 4 |
| 9 | 7.64 | 4 | 53290-0341 | 53290-0381 | 53290-0340 | 53290-0380 | 3 |
| C | B | A | MATERIAL NO. COLOR : BLACK 色 : 黒 | | MATERIAL NO. COLOR : NATURAL (WHITE) 色 : 自然色(白) | | 極数 CKT. |

| | | | | | | |
|--|---------------------------------------|------------|----------------------------|---|---|------------------------|
| REVISED EC NO: J2005-2460 2005/02/25 01DRNNMUDA 2005/02/28 CHKCKC10 2005/03/07 APPENIKITA 2005/03/07 REVISION DESCRIPTION | GENERAL TOLERANCES (UNLESS SPECIFIED) | | DIMENSION STYLE MM ONLY | SCALE --- | DESIGN UNITS METRIC | THIRD ANGLE PROJECTION |
| | 10 UNDER | ±0.2 | DRAWN BY J.SASAMO | DATE 2004/8/20 | TITLE 2.0 BOARD TO BOARD CONN. WAFER ASSY -LEAD FREE- | |
| | 10 OVER 30 UNDER | ±0.25 | CHECKED BY K.TOJO | DATE 2004/8/20 | | |
| | 30 OVER | ±0.3 | APPROVED BY N.UKITA | DATE 2004/8/20 | MOLEX INCORPORATED MATERIAL NO. SEE CHART DOCUMENT NO. SD-53290-004 SHEET NO. 2 OF 2 | |
| | ANGULAR | ±3 ° | MATERIAL NO. SEE CHART | | | |
| DRAFT WHERE APPLICABLE MUST REMAIN WITHIN DIMENSIONS | | SIZE A3 | | THIS DRAWING CONTAINS INFORMATION THAT IS PROPRIETARY TO MOLEX INCORPORATED AND SHOULD NOT BE USED WITHOUT WRITTEN PERMISSION | | |