

Excellent Integrated System Limited

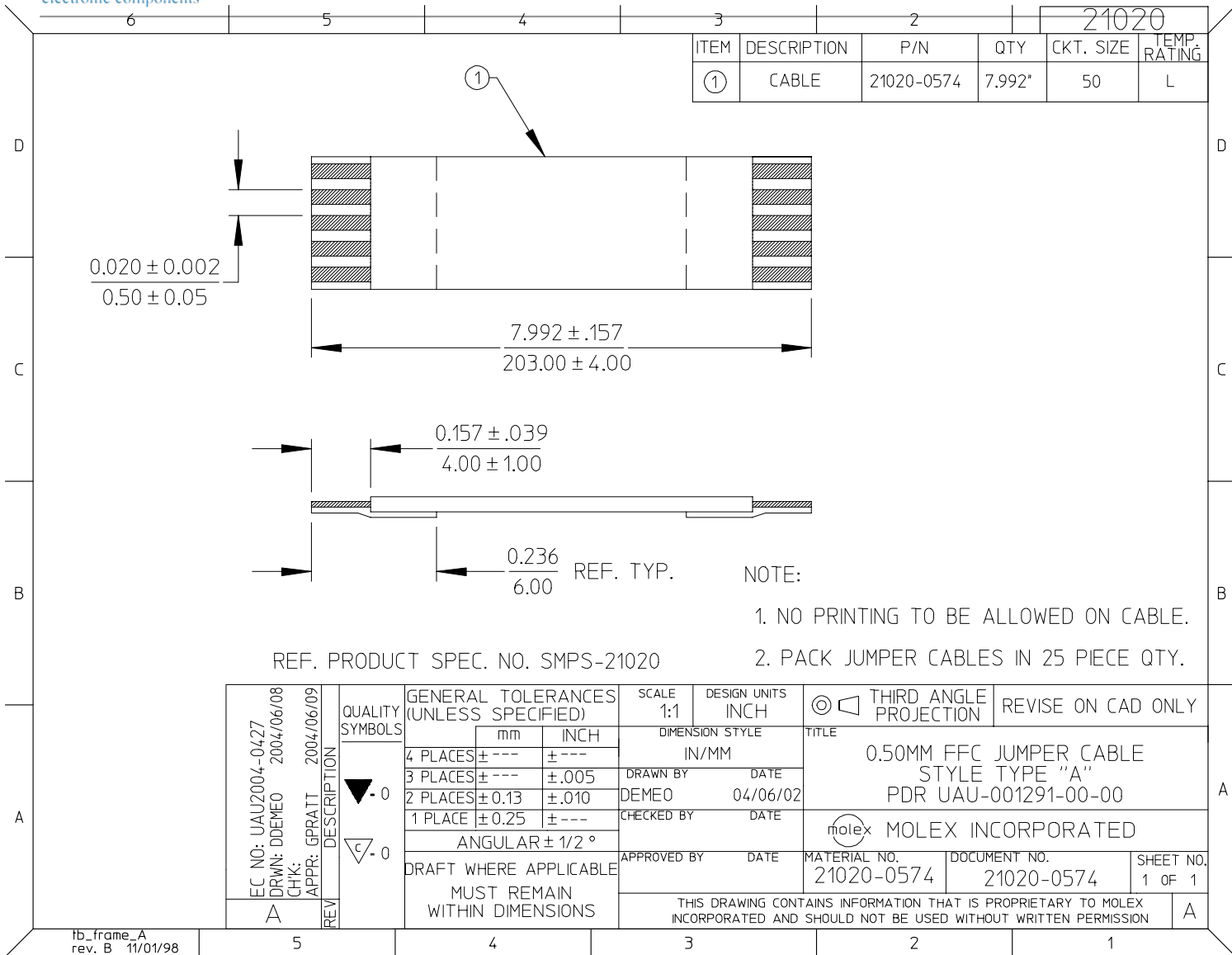
Stocking Distributor

Click to view price, real time Inventory, Delivery & Lifecycle Information:

[Molex Connector Corporation](#)
[21020-0574](#)

For any questions, you can email us directly:

sales@integrated-circuit.com



21020					
ITEM	DESCRIPTION	P/N	QTY	CKT. SIZE	TEMP. RATING
①	CABLE	21020-0574	7.992*	50	L

REF. PRODUCT SPEC. NO. SMPS-21020

- NOTE:
1. NO PRINTING TO BE ALLOWED ON CABLE.
 2. PACK JUMPER CABLES IN 25 PIECE QTY.

EC NO: UAU2004-0427 DRWN: DDEMO 2004/06/08 CHK: GPRATT 2004/06/09 APPR: GPRATT 2004/06/09	QUALITY SYMBOLS	GENERAL TOLERANCES (UNLESS SPECIFIED)		SCALE 1:1	DESIGN UNITS INCH	THIRD ANGLE PROJECTION	REVISE ON CAD ONLY	
	▽ -0 ◻ -0	4 PLACES	mm	INCH	DIMENSION STYLE IN/MM		TITLE	0.50MM FFC JUMPER CABLE STYLE TYPE "A" PDR UAU-001291-00-00
		3 PLACES	± ---	± ---	DRAWN BY DEMEO	DATE 04/06/02		
		2 PLACES	± 0.13	± .010	CHECKED BY	DATE	MOLEX INCORPORATED MATERIAL NO. 21020-0574 DOCUMENT NO. 21020-0574	SHEET NO. 1 OF 1
1 PLACE	± 0.25	± ---	APPROVED BY DATE					
DRAFT WHERE APPLICABLE		ANGULAR ± 1/2 °		MATERIAL NO. 21020-0574		DOCUMENT NO. 21020-0574	SHEET NO. 1 OF 1	
MUST REMAIN WITHIN DIMENSIONS		THIS DRAWING CONTAINS INFORMATION THAT IS PROPRIETARY TO MOLEX INCORPORATED AND SHOULD NOT BE USED WITHOUT WRITTEN PERMISSION						