

Excellent Integrated System Limited

Stocking Distributor

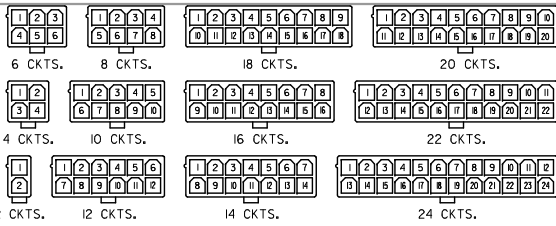
Click to view price, real time Inventory, Delivery & Lifecycle Information:

[Molex Connector Corporation](#)
[0039296168](#)

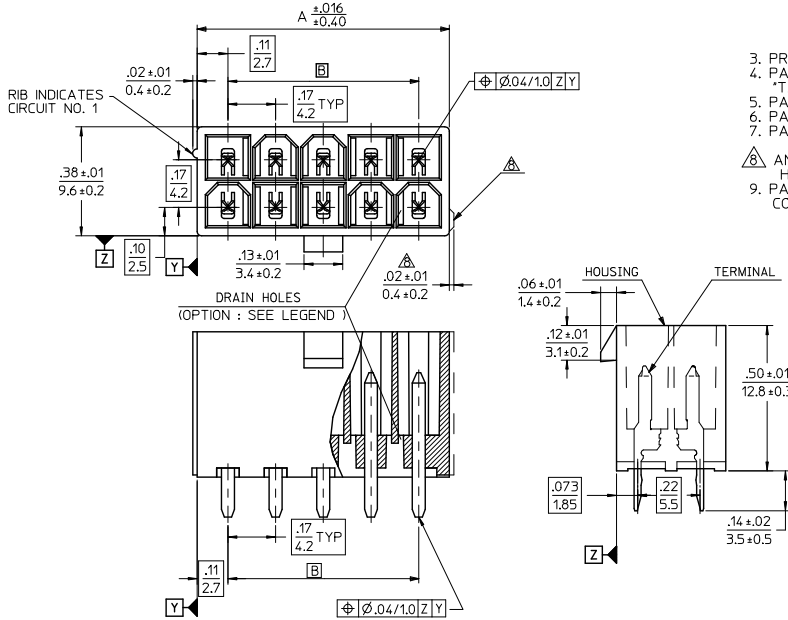
For any questions, you can email us directly:

sales@integrated-circuit.com

| CIRCUIT SIZE | DIM. 'A' | DIM. 'B' |
|--------------|----------------|----------------|
| 2 | .21 (5.4) | — |
| 4 | .38 (9.6) | .17 (4.2) |
| 6 | .54 (13.8) | .33 (8.4) |
| 8 | .71 (18.0) | .50 (12.6) |
| 10 | .87 (22.2) | .66 (16.8) |
| 12 | 1.04 (26.4) | .83 (21.0) |
| 14 | 1.20 (30.6) | .99 (25.2) |
| 16 | 1.37 (34.8) | 1.16 (29.4) |
| 18 | 1.54 (39.0) | 1.32 (33.6) |
| 20 | 1.70 (43.2) | 1.49 (37.8) |
| 22 | 1.87 (47.4) | 1.65 (42.0) |
| 24 | 2.03 (51.6) | 1.82 (46.2) |

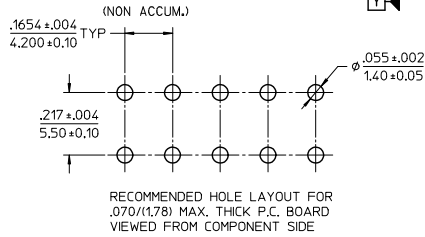
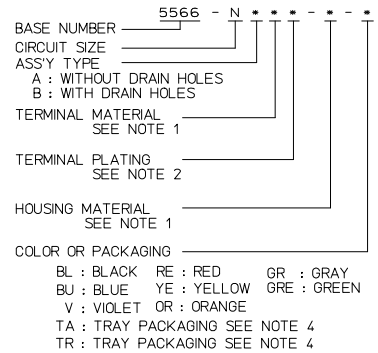


CIRCUIT SIZE LAYOUT



- NOTES:
- MATERIALS: HOUSING: "BLANK"=NYLON 6/6, UL94V-2, COLOR: NATURAL "210"=NYLON 6/6, UL94V-0, COLOR: NATURAL "400"=NYLON 6/6, UL94V-0, COLOR: BLACK TERMINALS: "BLANK" = BRASS "PB" = PHOSPHOR BRONZE
 - TERMINAL PLATING: "BLANK" = BRIGHT TIN 0.00035/(0.00090) MIN. OVER COPPER .00020/(0.00050) MIN. (BRASS) TIN .00035/(0.00090) MIN. REFLOW TREATMENT OR BRIGHT TIN .00035/(0.00090) MIN. (PHOSPHOR BRONZE) "S"=.000100/(0.00254) MIN. BRIGHT TIN OVER .000050/(0.00127) MIN NICKEL "GS2"=.000015/(0.00038) MIN. SELECT GOLD AND .000100/(0.00254) MIN. SELECT MATTE TIN OVER .000050/(0.00127) MIN. NICKEL OVERALL "GS"=.000030/(0.00076) MIN. SELECT GOLD AND .000100/(0.00254) MIN. SELECT MATTE TIN OVER .000050/(0.00127) MIN. NICKEL OVERALL
 - PRODUCT SPECIFICATION: PS-5566-001
 - PACKAGING: "BLANK"= BULK PACKED, "TA"=TRAY PACK PER PK-5566-001, "TR"=TRAY PACK PER PK-5566
 - PART MATES WITH MINI-FIT JR. RECEPTACLE NO. 5557.
 - PART IS NOT DESIGNED FOR CURRENT SHARING.
 - PARTS ARE NOT DESIGNED TO BE MATED OR UN-MATED WHILE CIRCUITS ARE LIVE.
 - ANTI-SHINGLING RIB MAY OR MAY NOT APPEAR ON HOUSINGS.
 - PART CONFORMS TO CLASS 'B' REQUIREMENTS OF COSMETIC SPECIFICATION PS-45499-002.

LEGEND

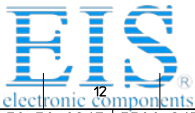


| | | | | | | |
|---|--|---|--------------------------|---------------------------|--|------------------------|
| ADD PINS EC NO: UCP2014-212 DRAWING NO: 2013/11/13 CHKD: JELL APPR: SMITH | QUALITY SYMBOLS ▽=0 ▽=0 ▽=0 | GENERAL TOLERANCES (UNLESS SPECIFIED) mm INCH 4 PLACES ± --- ± --- 3 PLACES ± --- ± .005 2 PLACES ± .13 ± .010 1 PLACE ± .25 ± --- ANGULAR ± 3° | DIMENSION STYLE IN/MM | SCALE 4:1 | DESIGN UNITS METRIC | THIRD ANGLE PROJECTION |
| | | | DRAWN BY H. HIRAMOTO | DATE '89/04/03 | TITLE MINI FIT JR VERTICAL HEADER ASSEMBLIES WITHOUT PEGS | |
| REV L7 | DRAFT WHERE APPLICABLE MUST REMAIN WITHIN DIMENSIONS | APPROVED BY M. FUKUSHIMA | DATE '94/04/20 | MATERIAL NO. SEE TABLE | DOCUMENT NO. SD-5566-002 | SHEET NO. 1 OF 5 |

| | | | | | | | | | | | | |
|---------------|----------------|----------------|-----------------|---------------|----------------|--------------|---------------|-------------|--------------|---------|----------|-----------|
| 13 | 12 | 11 | 10 | 9 | 8 | 7 | 6 | 5 | 4 | 3 | 2 | 1 |
| 39-29-5247 | 5566-24APB-210 | 39-30-9245 | 5566-24AGS2-210 | 39-29-6248 | 5566-24AGS-210 | 39-30-6242 | 5566-24AS-210 | 39-28-8240 | 5566-24A-210 | 24 | | |
| ↑ -5227 | ↑ -22APB-210 | ↑ -9225 | ↑ -22AGS2-210 | ↑ -6228 | ↑ -22AGS-210 | ↑ -6222 | ↑ -22AS-210 | ↑ -8220 | ↑ -22A-210 | 22 | | |
| ↑ -5207 | ↑ -20APB-210 | ↑ -9205 | ↑ -20AGS2-210 | ↑ -6208 | ↑ -20AGS-210 | ↑ -6202 | ↑ -20AS-210 | ↑ -8200 | ↑ -20A-210 | 20 | | |
| ↑ -5187 | ↑ -18APB-210 | ↑ -9185 | ↑ -18AGS2-210 | ↑ -6188 | ↑ -18AGS-210 | ↑ -6182 | ↑ -18AS-210 | ↑ -8180 | ↑ -18A-210 | 18 | | |
| ↑ -5167 | ↑ -16APB-210 | ↑ -9165 | ↑ -16AGS2-210 | ↑ -6168 | ↑ -16AGS-210 | ↑ -6162 | ↑ -16AS-210 | ↑ -8160 | ↑ -16A-210 | 16 | | |
| ↑ -5147 | ↑ -14APB-210 | ↑ -9145 | ↑ -14AGS2-210 | ↑ -6148 | ↑ -14AGS-210 | ↑ -6142 | ↑ -14AS-210 | ↑ -8140 | ↑ -14A-210 | 14 | | |
| ↑ -5127 | ↑ -12APB-210 | ↑ -9125 | ↑ -12AGS2-210 | ↑ -6128 | ↑ -12AGS-210 | ↑ -6122 | ↑ -12AS-210 | ↑ -8120 | ↑ -12A-210 | 12 | | |
| ↑ -5107 | ↑ -10APB-210 | ↑ -9105 | ↑ -10AGS2-210 | ↑ -6108 | ↑ -10AGS-210 | ↑ -6102 | ↑ -10AS-210 | ↑ -8100 | ↑ -10A-210 | 10 | | |
| ↑ -5087 | ↑ -08APB-210 | ↑ -9085 | ↑ -08AGS2-210 | ↑ -6088 | ↑ -08AGS-210 | ↑ -6082 | ↑ -08AS-210 | ↑ -8080 | ↑ -08A-210 | 8 | | |
| ↑ -5067 | ↑ -06APB-210 | ↑ -9065 | ↑ -06AGS2-210 | ↑ -6068 | ↑ -06AGS-210 | ↑ -6062 | ↑ -06AS-210 | ↑ -8060 | ↑ -06A-210 | 6 | | |
| ↓ -5047 | ↓ -04APB-210 | ↓ -9045 | ↓ -04AGS2-210 | ↓ -6048 | ↓ -04AGS-210 | ↓ -6042 | ↓ -04AS-210 | ↓ -8040 | ↓ -04A-210 | 4 | | |
| 39-29-5027 | 5566-02APB-210 | 39-30-9025 | 5566-02AGS2-210 | 39-29-6028 | 5566-02AGS-210 | 39-30-6022 | 5566-02AS-210 | 39-28-8020 | 5566-02A-210 | 2 | | |
| EDP NO. | ENG. NO. | EDP NO. | ENG. NO. | EDP NO. | ENG. NO. | EDP NO. | ENG. NO. | EDP NO. | ENG. NO. | EDP NO. | ENG. NO. | CKT. SIZE |
| 5566-NAPB-210 | | 5566-NAGS2-210 | | 5566-NAGS-210 | | 5566-NAS-210 | | 5566-NA-210 | | | | |
| 39-29-5246 | 5566-24APB | 39-30-9244 | 5566-24AGS2 | 39-29-0243 | 5566-24AGS | 39-30-6241 | 5566-24AS | 39-28-1243 | 5566-24A | 24 | | |
| ↑ -5226 | ↑ -22APB | ↑ -9224 | ↑ -22AGS2 | ↑ -0223 | ↑ -22AGS | ↑ -6221 | ↑ -22AS | ↑ -1223 | ↑ -22A | 22 | | |
| ↑ -5206 | ↑ -20APB | ↑ -9204 | ↑ -20AGS2 | ↑ -0203 | ↑ -20AGS | ↑ -6201 | ↑ -20AS | ↑ -1203 | ↑ -20A | 20 | | |
| ↑ -5186 | ↑ -18APB | ↑ -9184 | ↑ -18AGS2 | ↑ -0183 | ↑ -18AGS | ↑ -6181 | ↑ -18AS | ↑ -1183 | ↑ -18A | 18 | | |
| ↑ -5166 | ↑ -16APB | ↑ -9164 | ↑ -16AGS2 | ↑ -0163 | ↑ -16AGS | ↑ -6161 | ↑ -16AS | ↑ -1163 | ↑ -16A | 16 | | |
| ↑ -5146 | ↑ -14APB | ↑ -9144 | ↑ -14AGS2 | ↑ -0143 | ↑ -14AGS | ↑ -6141 | ↑ -14AS | ↑ -1143 | ↑ -14A | 14 | | |
| ↑ -5126 | ↑ -12APB | ↑ -9124 | ↑ -12AGS2 | ↑ -0123 | ↑ -12AGS | ↑ -6121 | ↑ -12AS | ↑ -1123 | ↑ -12A | 12 | | |
| ↑ -5106 | ↑ -10APB | ↑ -9104 | ↑ -10AGS2 | ↑ -0103 | ↑ -10AGS | ↑ -6101 | ↑ -10AS | ↑ -1103 | ↑ -10A | 10 | | |
| ↑ -5086 | ↑ -08APB | ↑ -9084 | ↑ -08AGS2 | ↑ -0083 | ↑ -08AGS | ↑ -6081 | ↑ -08AS | ↑ -1083 | ↑ -08A | 8 | | |
| ↑ -5066 | ↑ -06APB | ↑ -9064 | ↑ -06AGS2 | ↑ -0063 | ↑ -06AGS | ↑ -6061 | ↑ -06AS | ↑ -1063 | ↑ -06A | 6 | | |
| ↓ -5046 | ↓ -04APB | ↓ -9044 | ↓ -04AGS2 | ↓ -0043 | ↓ -04AGS | ↓ -6041 | ↓ -04AS | ↓ -1043 | ↓ -04A | 4 | | |
| 39-29-5026 | 5566-02APB | 39-30-9024 | 5566-02AGS2 | 39-29-0023 | 5566-02AGS | 39-30-6021 | 5566-02AS | 39-28-1023 | 5566-02A | 2 | | |
| EDP NO. | ENG. NO. | EDP NO. | ENG. NO. | EDP NO. | ENG. NO. | EDP NO. | ENG. NO. | EDP NO. | ENG. NO. | EDP NO. | ENG. NO. | CKT. SIZE |
| 5566-NAPB | | 5566-NAGS2 | | 5566-NAGS | | 5566-NAS | | 5566-NA | | | | |

PARTS WITH OUT DRAIN HOLES

| | | | | | | | | | |
|---|---------------------|---|--------------|--------------------|-----------|---|--------------|------------------------|--|
| SEE SHEET 1 EC NO: UCP2014-212 DRAWING NO: 2013/11/13 CHKD: BELL APPR: SMITH L7 REV | QUALITY SYMBOLS | GENERAL TOLERANCES (UNLESS SPECIFIED) | | DIMENSION STYLE | | SCALE | DESIGN UNITS | THIRD ANGLE PROJECTION | |
| | | mm | INCH | IN/MM | | 1:1 | METRIC | | |
| | | 4 PLACES ± --- | ± --- | DRAWN BY | DATE | TITLE | | | |
| | | 3 PLACES ± --- | ± .005 | H.HIRAMOTO | '89/04/03 | MINI FIT JR VERTICAL HEADER ASSEMBLIES WITHOUT PEGS | | | |
| 2 PLACES ± .13 | ± .010 | CHECKED BY | DATE | MOLEX INCORPORATED | | | | | |
| 1 PLACE ± .25 | ± --- | M.FUKUSHIMA | '94/04/20 | | | | | | |
| ANGULAR ± 3° | | APPROVED BY | DATE | | | | | | |
| | | F.SMITH | 2012/05/04 | | | | | | |
| DRAFT WHERE APPLICABLE MUST REMAIN WITHIN DIMENSIONS | | MATERIAL NO. | DOCUMENT NO. | SHEET NO. | | | | | |
| | | SEE TABLE | SD-5566-002 | 2 OF 5 | | | | | |
| | | THIS DRAWING CONTAINS INFORMATION THAT IS PROPRIETARY TO MOLEX INCORPORATED AND SHOULD NOT BE USED WITHOUT WRITTEN PERMISSION | | | | | | | |



Distributor of Molex Connector Corporation: Excellent Integrated System Limited

Datasheet of 0039296168 - CONN HEADER 16POS 4.2MM VERT GOL

Contact us: sales@integrated-circuit.com Website: www.integrated-circuit.com

Main table with columns for part numbers (e.g., 39-30-9247, 5566-24BGS2-210) and quantities (e.g., 24, 22, 20, 18, 16, 14, 12, 10, 8, 6, 4, 2). Rows are labeled J, I, H, G, F, E, D, C, B, A.

PARTS WITH DRAIN HOLES

Technical drawing header containing: SEE SHEET 1, EC NO: UCP2014-212, DRAWING NO: 2013/11/13, CHKD: BELL, APPR: SMITH, 2013/11/21, QUALITY SYMBOLS, GENERAL TOLERANCES (UNLESS SPECIFIED), DIMENSION STYLE IN/MM, SCALE 1:1, DESIGN UNITS METRIC, THIRD ANGLE PROJECTION, DRAWN BY H.HIRAMOTO, DATE '89/04/03, CHECKED BY M.FUKUSHIMA, DATE '94/04/20, APPROVED BY F.SMITH, DATE 2012/05/04, MATERIAL NO., DOCUMENT NO. SD-5566-002, SHEET NO. 3 OF 5, DRAFT WHERE APPLICABLE MUST REMAIN WITHIN DIMENSIONS, SEE TABLE, THIS DRAWING CONTAINS INFORMATION THAT IS PROPRIETARY TO MOLEX INCORPORATED AND SHOULD NOT BE USED WITHOUT WRITTEN PERMISSION.

[TRAY PACKED PART NUMBERS]

| | | | | | | | | | |
|---------------------------|------------------|-------------------|-------------------|-----------------|----------------|-----------------|------------|-------------|-----------|
| PARTS WITHOUT DRAIN HOLES | | | | | 39-53-9249 | 5566-24A-210-TA | 39-53-9248 | 5566-24A-TA | 24 |
| | | | | | | ↑ -22A-210-TA | ↑ -9228 | ↑ -22A-TA | 22 |
| | | | | | | -20A-210-TA | -9208 | -20A-TA | 20 |
| | | | 39-34-1180 | 5566-18A-210-TR | | -18A-210-TA | -9188 | -18A-TA | 18 |
| | | | | | | -16A-210-TA | -9168 | -16A-TA | 16 |
| | | | | | | -14A-210-TA | -9148 | -14A-TA | 14 |
| | | | | | | -12A-210-TA | -9128 | -12A-TA | 12 |
| | | | | | | -10A-210-TA | -9108 | -10A-TA | 10 |
| | | | | | | -08A-210-TA | -9088 | -08A-TA | 8 |
| | | 46999-0630 | 5566-06AGS2-BL-TA | | | -06A-210-TA | -9068 | -06A-TA | 6 |
| | 46999-0629 | 5566-04AGS2-BL-TA | | | ↓ -04A-210-TA | ↓ -9048 | ↓ -04A-TA | 4 | |
| | EDP NO. | ENG. NO. | EDP NO. | ENG. NO. | EDP NO. | ENG. NO. | EDP NO. | ENG. NO. | CKT. SIZE |
| | 5566-NAGS2-BL-TA | | 5566-NA-210-TR | | 5566-NA-210-TA | | 5566-NA-TA | | |

| | | | | | | | | | |
|---|----|-------------|----------------------|---------------------------------------|---|--|--------------|------------------------|--|
| SEE SHEET 1 EC NO: UCP204-212 DRAWING NO: 2013/11/13 CHKD: BELL APPR: SMITH | L7 | DESCRIPTION | QUALITY SYMBOLS | GENERAL TOLERANCES (UNLESS SPECIFIED) | DIMENSION STYLE | SCALE | DESIGN UNITS | THIRD ANGLE PROJECTION | |
| | | | ▽=0 | mm INCH | IN/MM | 1:1 | METRIC | ☉ | |
| | | | ▽=0 | 4 PLACES ± --- ± --- | DRAWN BY DATE | TITLE MINI FIT JR VERTICAL HEADER ASSEMBLIES WITHOUT PEGS | | | |
| | | | ▽=0 | 3 PLACES ± --- ± .005 | H.HIRAMOTO '89/04/03 | | | | |
| | | | 2 PLACES ± 13 ± .010 | CHECKED BY DATE | MOLEX INCORPORATED | | | | |
| | | | 1 PLACE ± 25 ± --- | M. FUKUSHIMA '94/04/20 | | | | | |
| | | | ANGULAR ± 3 ° | APPROVED BY DATE | MATERIAL NO. DOCUMENT NO. SHEET NO. | | | | |
| | | | | F. SMITH 2012/05/04 | | | | | |
| DRAFT WHERE APPLICABLE MUST REMAIN WITHIN DIMENSIONS | | | | SEE TABLE | SD-5566-002 | | 5 OF 5 | | |
| | | | | SIZE | THIS DRAWING CONTAINS INFORMATION THAT IS PROPRIETARY TO MOLEX INCORPORATED AND SHOULD NOT BE USED WITHOUT WRITTEN PERMISSION | | | | |