

## Excellent Integrated System Limited

Stocking Distributor

Click to view price, real time Inventory, Delivery & Lifecycle Information:

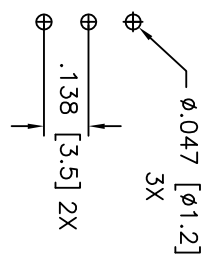
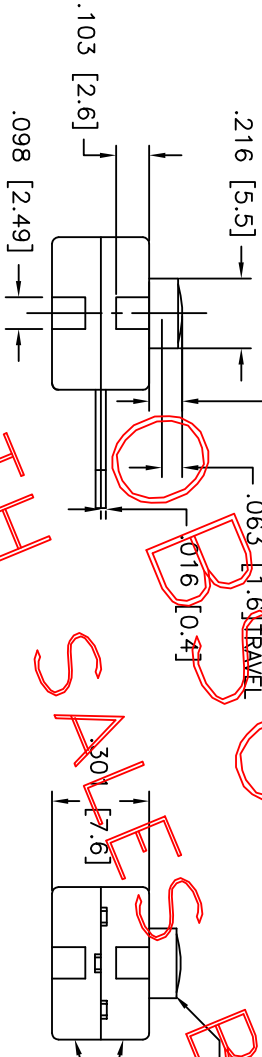
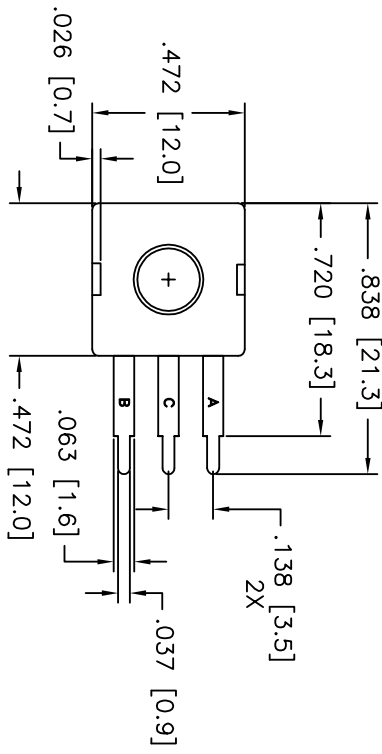
[Judco Manufacturing, Inc.](#)  
[50-0089-00](#)

For any questions, you can email us directly:

[sales@integrated-circuit.com](mailto:sales@integrated-circuit.com)

This document embodies a product, component, and/or design proprietary to JUDCO MANUFACTURING INC., and which is protected either as a trade secret, by U.S. Patent, or by copyright. It may not be used in any way without written express consent of JUDCO MANUFACTURING INC.

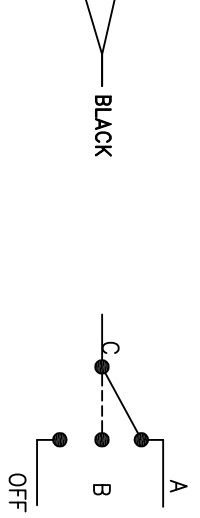
CHECK WITH SALES BEFORE USING



LTR	EN	DESCRIPTION	APPR	BY	DATE
A	-	INITIAL RELEASE	RB	NH	09-30-05
B	-	ADDED CUSTOMER PART# AND CHANGE DIMENSIONS FROM MM TO INCH.	RB	DC	12-20-05
B1	-	ADDED COLOR OF ACTUATOR (BLUE).	RB	DC	12-28-05
B2	-	CHANGE SCHEMATIC DIAGRAM TO MATCH SWITCH OPERATION.	RB	DC	02-13-06
C	-	UPDATED DRAWING TO MATCH SAMPLE PARTS. CALLED OUT DIMENSIONS BOTH IN INCHES & MM.	MT	DC	10-18-07
C1	-	ADDED HEIGHT OF PLUNGER AND TRAVEL.	MT	DC	08-06-08
C2	-	ADDED TOLERANCES	MT	DC	08-07-08

JUDCO INVENTORY NO. 50-0089-00  
 SWITCH TYPE: SPDT J-977-8 (ON A-ON B-OFF)  
 ELECTRICAL RATING: 12 VDC, 500mA

CUSTOMER: \_\_\_\_\_  
 CUSTOMER PN: \_\_\_\_\_  
 APPROVED BY: \_\_\_\_\_  
 DATE: \_\_\_\_\_



DO NOT SCALE DRAWING  
 DIMENSIONS IN INCHES (MM) UNLESS OTHERWISE SPECIFIED  
 TOLERANCES: ±.012 (0.30) X.X  
 ±.008 (0.20) X.XX  
 ±.004 (0.10) X.XXX  
 ANGLE: X° ±5°  
 X.X' ±3°  
 X.XX' ±1°

HARBOR CITY CALIFORNIA  
 MINI FLAT PACK J977-8  
 W/STRAIGHT TERMINALS

DRAWN: NH 09-30-05  
 APPR: KU 08-06-08  
 DWG. NO. 1415-860  
 SHEET 1 OF 1