

Excellent Integrated System Limited

Stocking Distributor

Click to view price, real time Inventory, Delivery & Lifecycle Information:

[FCI](#)
[7434L1025V01LF](#)

For any questions, you can email us directly:
sales@integrated-circuit.com

CATALOGUE NUMBER

7434L1025V01

7434L1025V01LF  LEAD FREE Version

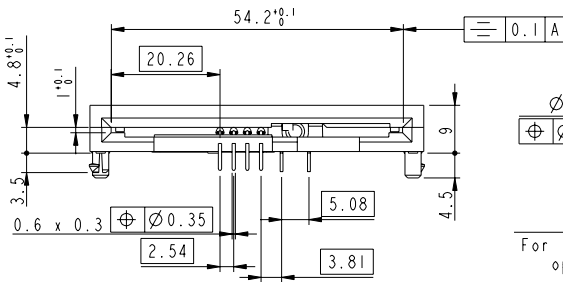
A

B

C

D

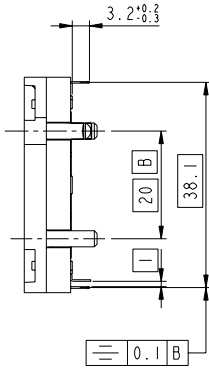
Copyright FCI



IMPLANTATION C.1
PCB FOOTPRINT

Tol Gen: 0mm to 10mm ±0.1mm
 10mm to 30mm ±0.15mm
 30mm to 60mm ±0.2mm
 60mm and above ±0.3mm

Crimping part to use with a thickness PCB of 1.6 holes $\phi=3.2^{+0.1}_0$



LEAD FREE VERSION:

"This product meets European Union Directives and other country regulations as described in GS-22-008"

The housing will withstand exposure to 260°C peak temperature for 10seconds in a wave solder application with a 1.6mm minimum thick circuit board

rev	ech no	dr	date
A	F20307	DLE	2002/04/29
B	105-0181	DTK	2005/12/28
C	106-0078	DTK	2006/06/19
-	-	-	-
-	-	-	-
-	-	-	-

www.fciconnect.com		surface ISO:1302	tolerance std ISO:406 ISO:1101	projection	MM
TOLERANCES UNLESS OTHERWISE SPECIFIED					
Dr	D. LEGRAND	02/04/29	ANGULAR	size	Scale
Eng	F. TISSERAND	02/04/29	LINEAR	A3	3:2
Chr	DILIPTHOMAS	2006/06/19	$\phi^+ \pm^*$	ECN	106-0078
Appr	DILIPTHOMAS	2006/06/19	Product family	SMARTCARD	Spec ref
FCI SMARTCARD ASSEMBLY				dbg no	VJW53519
L10				Rev.	C
catalog no				SEE TABLE	CUSTOMER
				sheet 1 of 1	