

Excellent Integrated System Limited

Stocking Distributor

Click to view price, real time Inventory, Delivery & Lifecycle Information:

[FCI](#)

[51952-001LF](#)

For any questions, you can email us directly:

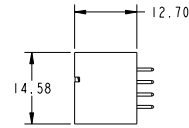
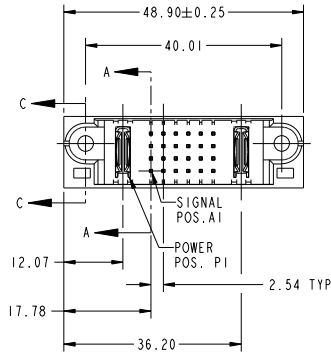
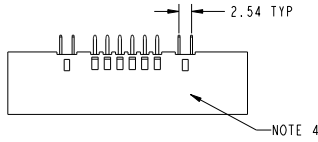
sales@integrated-circuit.com

Tous droits strictement réservés. Reproduction ou communication à des tiers interdite sous quelque forme que ce soit sans autorisation écrite du propriétaire. Propriété de FCI. Droits de reproduction FCI.



All rights strictly reserved. Reproduction or issue to third parties in any form whatever is not permitted without written authority from the proprietor. Property of FCI. Copyright FCI.

PRODUCT No.	ROWS	POWER		SIGNAL				POWER			
		E1	P1	1	2	3	4	5	6	P2	E2
51952-001-- NOTE: 3	D C B A										



CODE	DIM "M" ±0.25	CONTACT TYPE
E	[6.86]	SIGNAL
H	[5.59]	SIGNAL
PA	[N/A]	POWER

SEE NOTE				tolerances unless otherwise specified		CUSTOMER	
ltr	ecn no.	dr	date	linear	0.X ±0.5	COPY	www.fciconnect.com
A	V12513	DAI	10/31/01		0.XX ±0.25	projection	
B	V21104	TAB	10/01/02		0.XXX ±0.10		title
C	V03-0093	DAI	05/09/03	angles	0° ±2°	MM	IP + 24S + 1P VERTICAL SOLDER HEADER
D	DG05-0240	Guan	07/27/05	dr	J. WITMER 9/19/01	product family	PwrBlade
E	DG05-0450	Ryan	11/09/05	enr	J. ALLISON 9/19/01	size	dwg no
F	DG07-0498	JW	09/15/08	chr	J. ALLISON 9/19/01	scale	51952-001
				oppd	J. ALLISON 9/19/01	1:1	213
sheet index	revision sheet	F 1	F 2	F 3			sheet 1 of 3

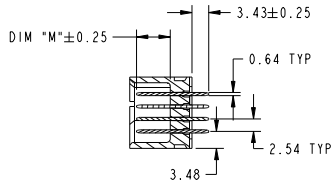
cage code 22526

Tous droits strictement réservés. Reproduction ou communication à des tiers interdite sous quelque forme que ce soit sans autorisation écrite du propriétaire. Propriété de FCI. Droits de reproduction FCI.

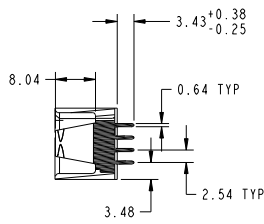


All rights strictly reserved. Reproduction or issue to third parties in any form whatever is not permitted without written authority from the proprietor. Property of FCI. Copyright FCI.

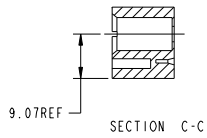
PRODUCT NUMBER
51952-001LF
NOTE: 3



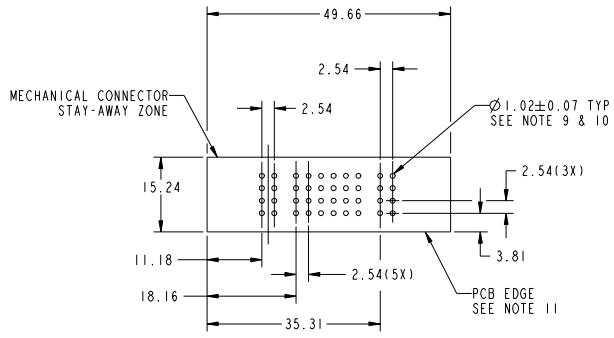
SECTION A-A



SECTION B-B



SECTION C-C



RECOMMENDED PCB LAYOUT

mat'l code		SEE NOTE		tolerances unless otherwise specified		CUSTOMER	
ltr	ecm no.	dr	date	linear	0.X ± 0.5	COPY	www.fciconnect.com
f					0.XX ± 0.25	projection	
				angles	0.XXX ± 0.10		title
				dr	0° ± 2°	MM	IP + 24S + 1P
				enr	J. WITMER 9/19/01	scale	VERTICAL SOLDER HEADER
				chr	J. ALLISON 9/19/01	1:1	product family
				oppd	J. ALLISON 9/19/01		PwrBlade
sheet index	revision sheet						size
							dwg no
							51952-001
							code
							213
							sheet
							2
							code
							22526

Pro/E

cage code 22526

Tous droits strictement réservés. Reproduction ou communication à des tiers interdite sous quelque forme que ce soit sans autorisation écrite du propriétaire. Propriété de FCI. Droits de reproduction FCI.

All rights strictly reserved. Reproduction or issue to third parties in any form whatever is not permitted without written authority from the proprietor. Property of FCI. Copyright FCI.

PRODUCT NUMBER
51952-001LF
NOTE: 3

NOTES:

1. DIMENSIONS AND TOLERANCES ARE IN ACCORDANCE WITH ASME Y14.5M, 1994 UNLESS OTHERWISE SPECIFIED.

CONNECTOR NOTES:

2. HOUSING MATERIAL: UL 94 V-0 GLASS FILLED HIGH TEMP THERMOPLASTIC
 POWER CONTACT MATERIAL: COPPER ALLOY
 SIGNAL CONTACT MATERIAL: COPPER ALLOY

3. **PLATING:**
 SEE ITEM 1 & 2 IN PRINT 10064183 FOR PLATING SPEC OF 51952-001; 51952-001LF RESPECTIVELY

4. *MANUFACTURER'S* NAME, P/N, AND DATE CODE TO APPEAR ON THIS SURFACE

5. PRODUCT SPECIFICATION GS-12-149.
 APPLICATION SPECIFICATION BUS-20-067.

6. PACKAGED IN TRAYS.

PCB NOTES:

7. ALL DIMENSIONS ARE BASIC UNLESS OTHERWISE SPECIFIED.

8. ALL THROUGH HOLES ARE LOCATED WITH A TRUE POSITION OF 0.004 [0.10]

9. ALL HOLE DIAMETERS ARE FINISHED HOLE SIZE

10. $\varnothing 1.151 \pm 0.025$ DRILLED HOLES PLATED WITH)
 0.008 MIN SnPb OR Sn OVER 0.03
 TO 0.08 Cu PLATING TO ACHIEVE
 $\varnothing 1.02 \pm .07$ HOLE.

11. CONNECTOR KEEP-OUT ZONE.

12. A Δ SYMBOL WILL BE NEXT TO ANY DIMENSION, VIEW, OR NOTE WHICH HAS BEEN MODIFIED WITH THE CURRENT DRAWING REVISION.

mat'l code		SEE NOTE		tolerances unless otherwise specified		CUSTOMER	
ltr	ecm no.	dr	date	linear	0.X ± 0.5	projection	www.fciconnect.com
F					0.XX ± 0.25	MM	IP + 24S + 1P
				angles	0.XXX ± 0.10	scale	VERTICAL SOLDER HEADER
				dr	0" ± 2"	1:1	product family PwrBlade
				engr	J. WITMER 9/19/01		size
				chr	J. ALLISON 9/19/01		dwg no
				oppd	J. ALLISON 9/19/01		51952-001
sheet index	revision sheet						code
							213
							sheet
							3

Pro/E

cage code 22526