

Excellent Integrated System Limited

Stocking Distributor

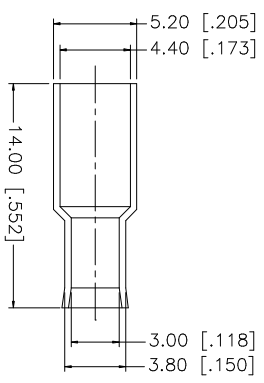
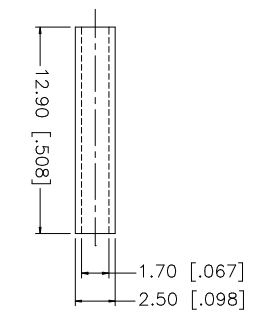
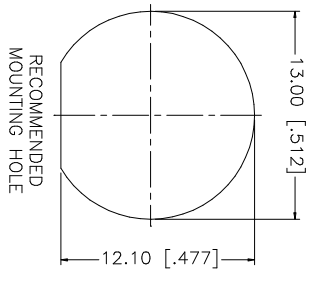
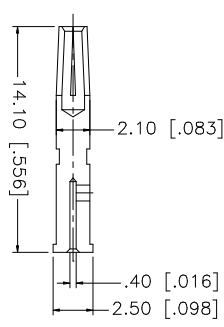
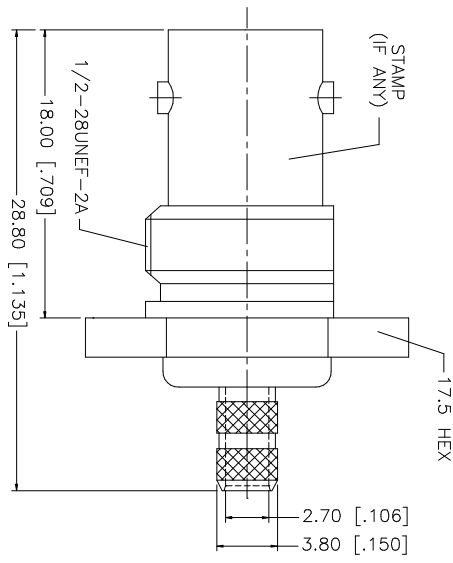
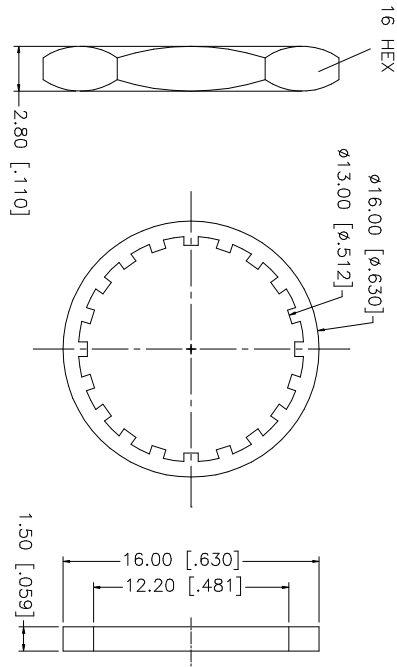
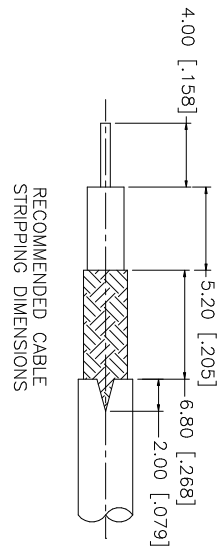
Click to view price, real time Inventory, Delivery & Lifecycle Information:

[Amphenol RF](#)
[112235](#)

For any questions, you can email us directly:

sales@integrated-circuit.com

REV.	DATE	DESCRIPTION
A	10/12/03	MODIFY DRAWING FORMAT



NOTE:
 1. CRIMPED FERRULE
 HEX CRIMP SIZE .178"
 2. CRIMPED CONTACT PIN
 HEX CRIMP SIZE .068"

DESCRIPTION	MATERIAL	FINISH	QTY	DO NOT SCALE DRAWING	APPROVALS	DATE	PART DESCRIPTION			
8 FERRULE	COPPER	NICKEL	1	UNLESS OTHERWISE SPECIFIED DIMENSIONS ARE IN INCHES DIMENSIONS IN PARENTHESES ARE FOR SUBSTITUTED SERVICE ONLY. TOLERANCES FOR MILLIMETERS ARE: 0.5 - 8mm ± 0.20mm 8 - 30mm ± 0.40mm 30 - 120mm ± 0.50mm UNLESS OTHERWISE SPECIFIED TOLERANCES FOR INCHES ARE: .020 - .315 = ± 0.007" .315 - 1.180 = ± 0.015" 1.180 - 4.724 = ± 0.020"	APPROVALS	DATE	Amphenol Connex BNC BULKHEAD CRIMP JACK (FOR RG-179/U, 187A/U) 112235			
7 SLEEVE	DELFIN	NATURAL	1		DRAWN	G.R.S.		10/12/03		
6 HEX NUT	BRASS	NICKEL	1		CHECKED					
5 LOCK WASHER	BRASS	NICKEL	1		ISSUED					
4 GASKET	RUBBER	RED	1		SHEET	1 OF 1				
3 CONTACT PIN	PHOS. BRONZE	GOLD	1							
2 INSULATOR	DELFIN	NATURAL	1							
1 BODY	BRASS	NICKEL	1							
DESCRIPTION	MATERIAL	FINISH	QTY	DO NOT SCALE DRAWING	CAD FILE	C:\112\112235.DWG	DWG. NO. 112235.DWG	REV. A	SIZE A	SCALE NA