

## **Excellent Integrated System Limited**

Stocking Distributor

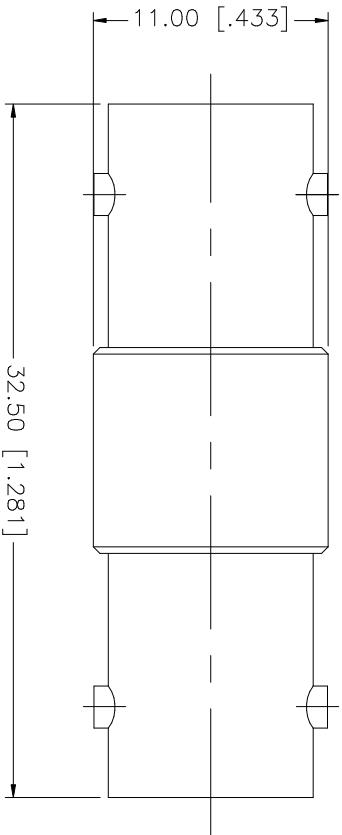
Click to view price, real time Inventory, Delivery & Lifecycle Information:


[Amphenol RF](#)  
[112445](#)

For any questions, you can email us directly:

[sales@integrated-circuit.com](mailto:sales@integrated-circuit.com)

REV.	DATE	DESCRIPTION
NC	05/01/04	INITIAL RELEASE
A	06/09/06	REMOVE "BULKHEAD" FROM PART DESCRIPTION



8						UNLESS OTHERWISE SPECIFIED DIMENSIONS ARE IN MILLIMETERS. DIMENSIONS IN [ ] ARE IN INCHES AND FOR CUSTOMER REFERENCE ONLY.	APPROVALS	DATE	 <b>BNC FEMALE TO FEMALE ADAPTER</b> PART NO. 112445		
7							DRAWN	06/09/06			
6						UNLESS OTHERWISE SPECIFIED TOLERANCES FOR MILLIMETERS ARE: 0.5 - 8mm ± 0.20mm 8 - 30mm ± 0.40mm 30 - 120mm ± 0.50mm	CHECKED				
5						UNLESS OTHERWISE SPECIFIED TOLERANCES FOR INCHES ARE: .020 - .315 = ± 0.007" .315 - 1.180 = ± 0.015" 1.180 - 4.724 = ± 0.020"	ISSUED				
4											
3	CONTACT PIN	PHOS. BRONZE	GOLD	1					CAD FILE C:/112/112445.DWG		
2	INSULATOR	DELFIN	NATURAL	1							
1	BODY	BRASS	NICKEL	1							
	DESCRIPTION	MATERIAL	FINISH	QTY		DO NOT SCALE DRAWING			REV. A	SIZE A	SCALE NA