

## Excellent Integrated System Limited

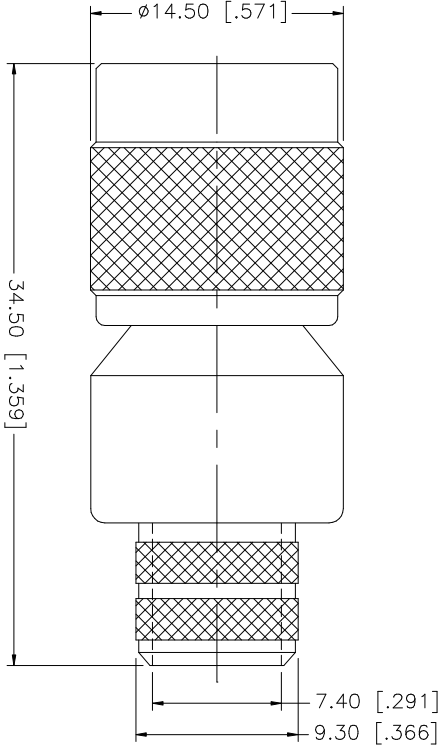
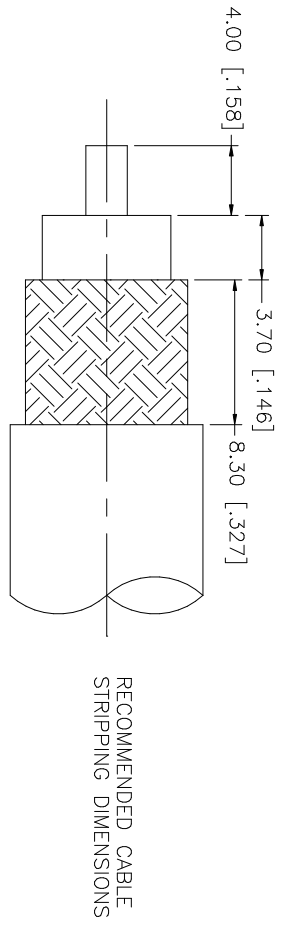
Stocking Distributor

Click to view price, real time Inventory, Delivery & Lifecycle Information:

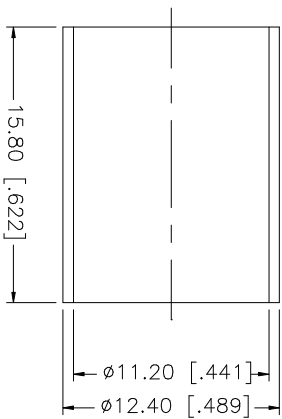
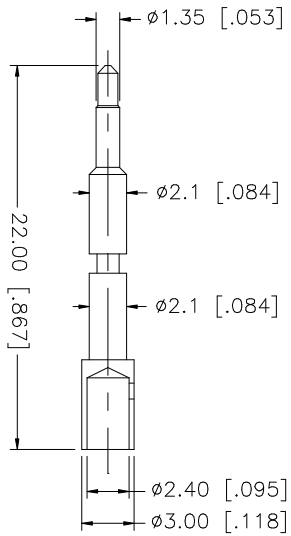
[Amphenol RF](#)  
[122398](#)

For any questions, you can email us directly:

[sales@integrated-circuit.com](mailto:sales@integrated-circuit.com)



- CRIMP NOTES:
1. CRIMPED FERRULE  
HEX CRIMP SIZE .429"
  2. CRIMPED CONTACT PIN  
HEX CRIMP SIZE .100"



REV.	DATE	DESCRIPTION
NC	08/28/98	INITIAL RELEASE
A	07/20/05	UPDATE DRAWING FORMAT

8					UNLESS OTHERWISE SPECIFIED DIMENSIONS ARE IN MILLIMETERS, DIMENSIONS IN [ ] ARE IN INCHES AND FOR CUSTOMER REFERENCE ONLY.
7					UNLESS OTHERWISE SPECIFIED TOLERANCES FOR MILLIMETERS ARE:
6					0.5 - 8mm ± 0.20mm
5					8 - 30mm ± 0.40mm
4	FERRULE	BRASS	NICKEL	1	30 - 120mm ± 0.50mm
3	CONTACT PIN	BRASS	GOLD	1	UNLESS OTHERWISE SPECIFIED TOLERANCES FOR INCHES ARE:
2	INSULATOR	TEFLON	NATURAL	1	.020 - .315 = ± 0.007"
1	BODY	BRASS	NICKEL	1	.315 - 1.180 = ± 0.015"
	DESCRIPTION	MATERIAL	FINISH	QTY	1.180 - 4.724 = ± 0.020"
					DO NOT SCALE DRAWING
		APPROVALS		DATE	
		DRAWN G.R.S.		07/20/05	
		CHECKED			
		ISSUED			
		SHEET 1 OF 1			
		CAD FILE C:/122/122398.DWG			
		DWG. NO. 122398.DWG		REV. A	SCALE N/A
		PART DESCRIPTION			
		TNC CRIMP PLUG (FOR 214/U CABLE)			
		PART NO. 122398			

**Amphenol Connex**