

## Excellent Integrated System Limited

Stocking Distributor

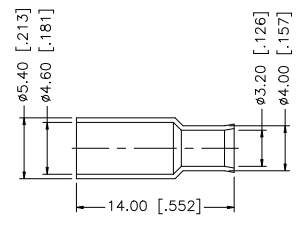
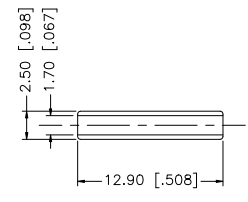
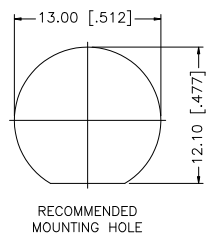
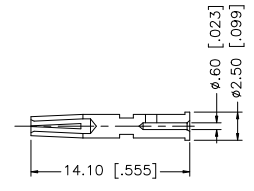
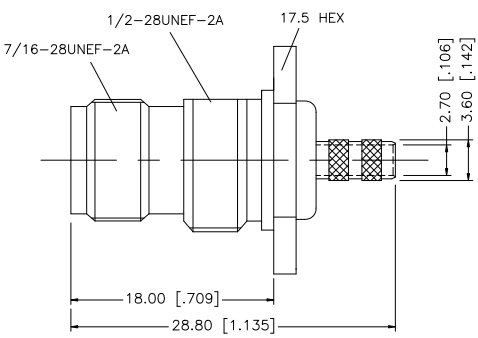
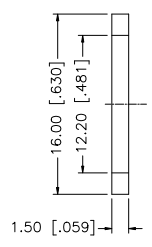
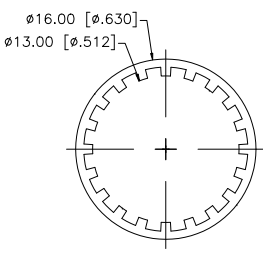
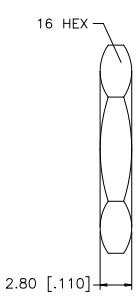
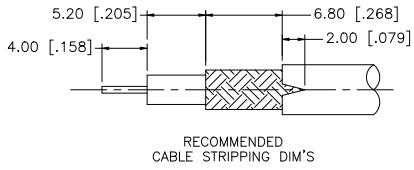
Click to view price, real time Inventory, Delivery & Lifecycle Information:

[Amphenol RF](#)  
[122358](#)

For any questions, you can email us directly:

[sales@integrated-circuit.com](mailto:sales@integrated-circuit.com)

| REV. | DATE     | ECR NO. | DESCRIPTION           |
|------|----------|---------|-----------------------|
| NC   | 03/20/05 | -       | INITIAL RELEASE       |
| A    | 01/20/09 | 100073  | UPDATE DRAWING FORMAT |



| QTY          | DESCRIPTION | MATERIAL    | FINISH  | QTY | DO NOT SCALE DRAWING  | CAD FILE          | APPROVALS  | DATE      | PART NO. | PART DESCRIPTION | DWG. NO. | REV.    | SIZE | SCALE  |  |              |  |  |        |   |            |    |   |    |
|--------------|-------------|-------------|---------|-----|---|-------------------|--|-----------|----------|------------------|----------|---------|------|--------|--|--------------|--|--|--------|---|------------|----|---|----|
| 8            | FERRULE     | COPPER      | NICKEL  | 1   | <small>UNLESS OTHERWISE SPECIFIED DIMENSIONS ARE IN MILLIMETERS. DIMENSIONS IN [ ] ARE IN INCHES AND FOR CUSTOMER REFERENCE ONLY.</small><br><small>UNLESS OTHERWISE SPECIFIED TOLERANCES FOR MILLIMETERS ARE:</small><br>0.5 - 8mm ± 0.20mm<br>8 - 30mm ± 0.40mm<br>30 - 120mm ± 0.50mm<br><small>UNLESS OTHERWISE SPECIFIED TOLERANCES FOR INCHES ARE:</small><br>.020 - .315 = ± 0.007"<br>.315 - 1.180 = ± 0.015"<br>1.180 - 4.724 = ± 0.020" | C:/122/122358.DWG | <table border="1"> <tr><td>APPROVALS</td><td>DATE</td></tr> <tr><td>DRAWN GRS</td><td>01/20/09</td></tr> <tr><td>CHECKED</td><td></td></tr> <tr><td>ISSUED</td><td></td></tr> <tr><td>SHEET 1 OF 1</td><td></td></tr> </table> | APPROVALS | DATE     | DRAWN GRS        | 01/20/09 | CHECKED |      | ISSUED |  | SHEET 1 OF 1 |  |  | 122358 | TNC BULKHEAD CRIMP JACK<br>(FOR RG-174/U, 316/U DOUBLE BRAID) | 122358.DWG | NC | A | NA |
| APPROVALS    | DATE        |             |         |     |   |                   |  |           |          |                  |          |         |      |        |  |              |  |  |        |   |            |    |   |    |
| DRAWN GRS    | 01/20/09    |             |         |     |   |                   |  |           |          |                  |          |         |      |        |  |              |  |  |        |   |            |    |   |    |
| CHECKED      |             |             |         |     |   |                   |  |           |          |                  |          |         |      |        |  |              |  |  |        |   |            |    |   |    |
| ISSUED       |             |             |         |     |   |                   |  |           |          |                  |          |         |      |        |  |              |  |  |        |   |            |    |   |    |
| SHEET 1 OF 1 |             |             |         |     |   |                   |  |           |          |                  |          |         |      |        |  |              |  |  |        |   |            |    |   |    |
| 7            | SLEEVE      | DELTRIN     | NATURAL | 1   |   |                   |  |           |          |                  |          |         |      |        |  |              |  |  |        |   |            |    |   |    |
| 6            | HEX NUT     | BRASS       | NICKEL  | 1   |   |                   |  |           |          |                  |          |         |      |        |  |              |  |  |        |   |            |    |   |    |
| 5            | LOCK WASHER | BRASS       | NICKEL  | 1   |   |                   |  |           |          |                  |          |         |      |        |  |              |  |  |        |   |            |    |   |    |
| 4            | GASKET      | SILICONE    | RED     | 1   |   |                   |  |           |          |                  |          |         |      |        |  |              |  |  |        |   |            |    |   |    |
| 3            | CONTACT PIN | BER. COPPER | GOLD    | 1   |   |                   |  |           |          |                  |          |         |      |        |  |              |  |  |        |   |            |    |   |    |
| 2            | INSULATOR   | DELTRIN     | NATURAL | 1   |   |                   |  |           |          |                  |          |         |      |        |  |              |  |  |        |   |            |    |   |    |
| 1            | BODY        | BRASS       | NICKEL  | 1   |   |                   |  |           |          |                  |          |         |      |        |  |              |  |  |        |   |            |    |   |    |

**Amphenol Connex**