

Excellent Integrated System Limited

Stocking Distributor

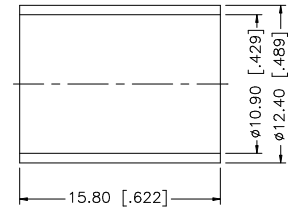
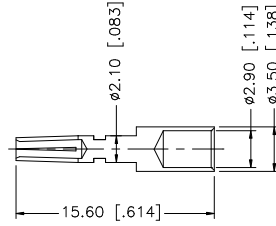
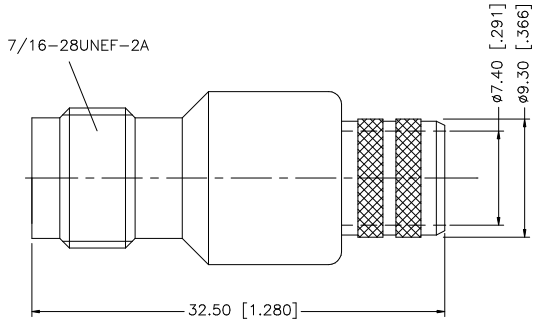
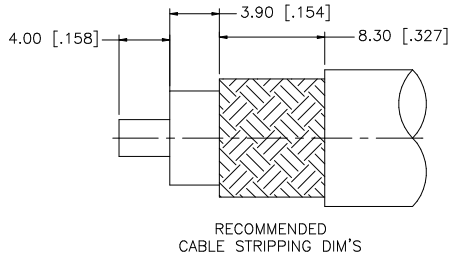
Click to view price, real time Inventory, Delivery & Lifecycle Information:

[Amphenol RF](#)
[122392](#)

For any questions, you can email us directly:

sales@integrated-circuit.com

REV.	DATE	DESCRIPTION
NC	04/15/98	INITIAL RELEASE
A	01/31/07	UPDATE DRAWING FORMAT



NOTE:

1. CRIMPED FERRULE HEX CRIMP SIZE .429"
2. CRIMPED CONTACT PIN HEX CRIMP SIZE .118"

				UNLESS OTHERWISE SPECIFIED DIMENSIONS ARE IN MILLIMETERS. DIMENSIONS IN [] ARE IN INCHES AND FOR CUSTOMER REFERENCE ONLY.	APPROVALS	DATE	Amphenol Connex
8					DRAWN	G.R.S.	
7					CHECKED		
6					ISSUED		
5					SHEET	1 OF 1	
4	FERRULE	COPPER	NICKEL	1	PART DESCRIPTION		
3	CONTACT PIN	PHOS. BRONZE	GOLD	1	TNC CRIMP JACK (FOR BELDEN 8214, 9913, LMR400 CABLE)		
2	INSULATOR	TEFLON	NATURAL	1	PART NO.		
1	BODY	BRASS	NICKEL	1	122392		
	DESCRIPTION	MATERIAL	FINISH	QTY	CAD FILE	C:/122/122392.DWG	DWG. NO. 122392.DWG
				DO NOT SCALE DRAWING			REV. A SIZE A SCALE NA