

Excellent Integrated System Limited

Stocking Distributor

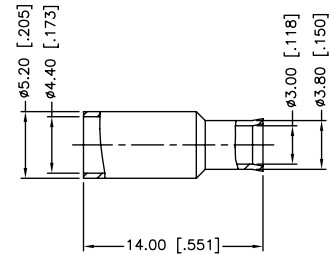
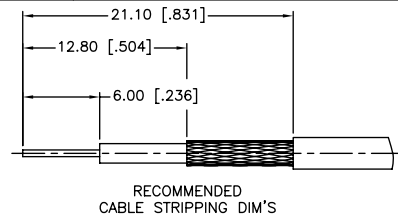
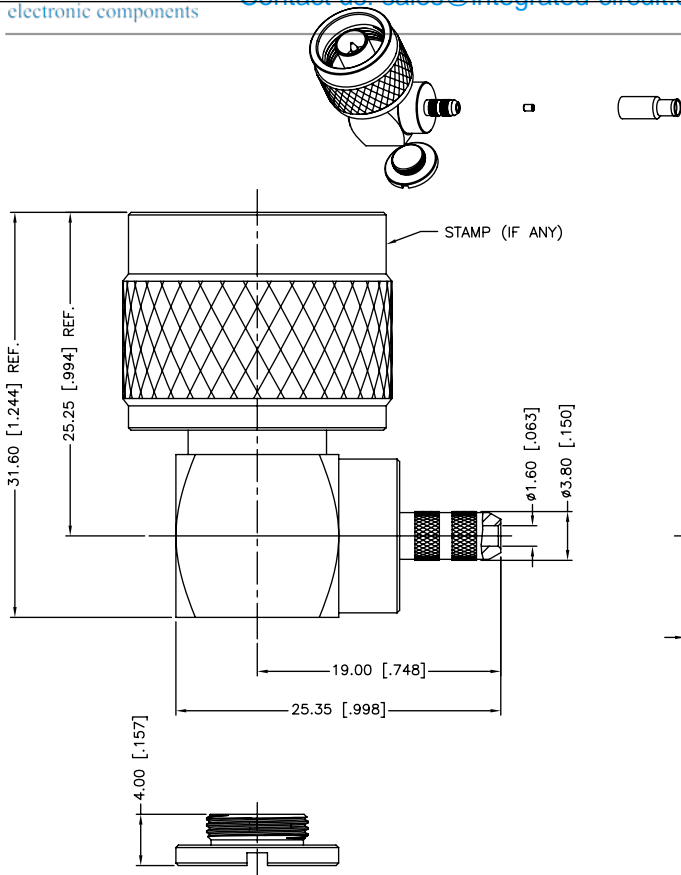
Click to view price, real time Inventory, Delivery & Lifecycle Information:

[Amphenol RF](#)
[172180](#)

For any questions, you can email us directly:

sales@integrated-circuit.com

REV.	DATE	ECR NO.	DESCRIPTION
A	06/16/01	XXXXXX	MODIFY PLATING SPEC.
B	01/30/04	XXXXXX	UPDATE DRAWING FORMAT/MODIFY BODY LENGTH/COVER
C	06/21/12	2294	REVISE THE DESIGN



1. IMPEDANCE:50 OHM
2. FREQUENCY RANGE: DC-2.5 GHz
3. VSWR: 1.2 MAX.
4. DIELECTRIC WITHSTANDING VOLTAGE: 2500 VRMS, MIN.
5. DURABILITY: 500 CYCLES MIN.
6. TEMPERATURE RANGE: -65°C TO +165°C
7. CONTACT PIN TO SOLDER
HEX. CRIMP SIZE .178"

DESCRIPTION	MATERIAL	FINISH	QTY	DO NOT SCALE DRAWING	APPROVALS	DATE	Amphenol Connex																																					
9	FERRULE	BRASS	NEXCOTE	1	<small>UNLESS OTHERWISE SPECIFIED DIMENSIONS ARE IN MILLIMETERS. DIMENSIONS IN [] ARE IN INCHES AND FOR CUSTOMER REFERENCE ONLY.</small> <small>UNLESS OTHERWISE SPECIFIED TOLERANCES FOR MILLIMETERS ARE:</small> 0.5 - 8mm ± 0.20mm 8 - 30mm ± 0.40mm 30 - 120mm ± 0.50mm <small>UNLESS OTHERWISE SPECIFIED TOLERANCES FOR INCHES ARE:</small> .020 - .315 = ± 0.007" .315 - 1.180 = ± 0.015" 1.180 - 4.724 = ± 0.020"			N R/A CRIMP PLUG (FOR RG-316/U,174/U CABLE)																																				
8	INSULATOR	ULTEM	NATURAL	1		DRAWN	M.ZHANG					06/21/12	PART NO. 172180 DWG. NO. 172180.DWG																															
7	COVER	BRASS	NEXCOTE	1		CHECKED											REV. C SIZE A SCALE NA																											
6	BODY WITH BARREL	BRASS	NEXCOTE	1		ISSUED															SHEET 1 OF 1																							
5	CONTACT PIN	BRASS	GOLD	1																					CAD FILE C:/CONNEX/172180.DWG																			
4	RETAINER RING	PHOSPHOR BRONZE	NATURAL	1																									PART DESCRIPTION															
3	GASKET	SILICONE	RED	1																													PART NO. 172180											
2	INSULATOR	PTFE	NATURAL	1																																	DWG. NO. 172180.DWG							
1	COUPLING NUT	BRASS	NEXCOTE	1																																					REV. C SIZE A SCALE NA			
	DESCRIPTION	MATERIAL	FINISH	QTY																																								