

Excellent Integrated System Limited

Stocking Distributor

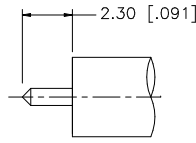
Click to view price, real time Inventory, Delivery & Lifecycle Information:

[Amphenol RF](#)
[132100](#)

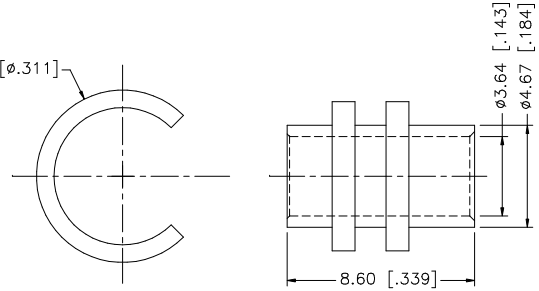
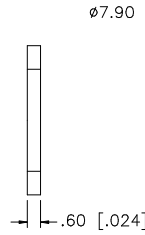
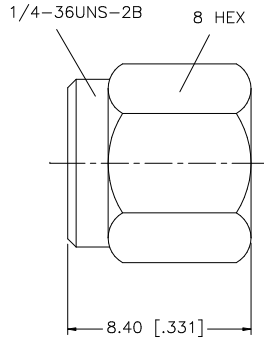
For any questions, you can email us directly:

sales@integrated-circuit.com

REV.	DATE	DESCRIPTION
A	01/20/04	UPDATE DRAWING FORMAT



RECOMMENDED CABLE STRIPPING DIMENSIONS



REV.	DATE	DESCRIPTION
A	01/20/04	UPDATE DRAWING FORMAT

8				<small>UNLESS OTHERWISE SPECIFIED DIMENSIONS ARE IN MILLIMETERS. DIMENSIONS IN [] ARE IN INCHES AND FOR CUSTOMER REFERENCE ONLY.</small> <small>UNLESS OTHERWISE SPECIFIED TOLERANCES FOR MILLIMETERS ARE:</small> 0.5 - 8mm ± 0.20mm 8 - 30mm ± 0.40mm 30 - 120mm ± 0.50mm <small>UNLESS OTHERWISE SPECIFIED TOLERANCES FOR INCHES ARE:</small> .020 - .315 = ± 0.007" .315 - 1.180 = ± 0.015" 1.180 - 4.724 = ± 0.020"	APPROVALS	DATE		
7					DRAWN	G.R.S.		01/20/04
6					CHECKED			
5					ISSUED			
4	RETAINER RING	BER. COPPER	NATURAL		1			
3	GASKET	SILICONE	RED	1				
2	BODY	BRASS	GOLD	1				
1	HOUSING	BRASS	GOLD	1				
	DESCRIPTION	MATERIAL	FINISH	QTY	DO NOT SCALE DRAWING	C:/132/132100.DWG	PART DESCRIPTION SMA DIRECT SOLDER PLUG (.141 SEMI-RIGID CABLE) PART NO. 132100 DWG. NO. 132100 REV. A SIZE A SCALE NA	