

Excellent Integrated System Limited

Stocking Distributor

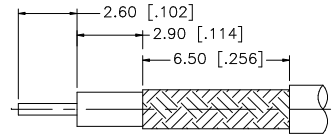
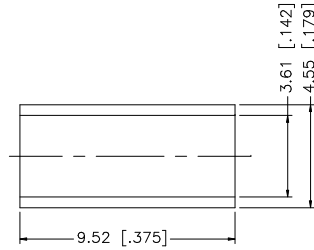
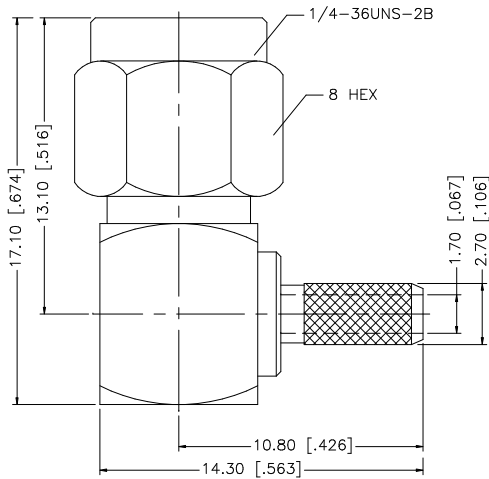
Click to view price, real time Inventory, Delivery & Lifecycle Information:

[Amphenol RF](#)
[132182](#)

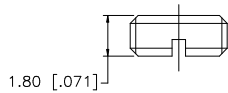
For any questions, you can email us directly:

sales@integrated-circuit.com

REV.	DATE	DESCRIPTION
C	02/18/03	UPDATE DRAWING FORMAT
D	07/31/05	ADD "DOUBLE BRAID CABLE" TO DESCRIPTION



RECOMMENDED
CABLE STRIPPING DIM'S



- NOTE:
 1. CRIMPED FERRULE
 HEX CRIMP SIZE .151"
 2. CONTACT PIN TO SOLDER

DESCRIPTION	MATERIAL	FINISH	QTY	DO NOT SCALE DRAWING	APPROVALS	DATE	PART DESCRIPTION			
8 HEAT SHRINK TUBE		BLACK	1	<small>UNLESS OTHERWISE SPECIFIED DIMENSIONS ARE IN MILLIMETERS. DIMENSIONS IN [] ARE IN INCHES AND FOR CUSTOMER REFERENCE ONLY.</small> <small>UNLESS OTHERWISE SPECIFIED TOLERANCES FOR MILLIMETERS ARE:</small> 0.5 - 8mm ± 0.20mm 8 - 30mm ± 0.40mm 30 - 120mm ± 0.50mm <small>UNLESS OTHERWISE SPECIFIED TOLERANCES FOR INCHES ARE:</small> .020 - .315 = ± 0.007" .315 - 1.180 = ± 0.015" 1.180 - 4.724 = ± 0.020"	DRAWN	G.R.S.	07/31/05	Amphenol Connex SMA R/A CRIMP PLUG (FOR RG-316/U DOUBLE BRAID CABLE)		
7 FERRULE	COPPER	GOLD	1		CHECKED					
6 COVER	BRASS	GOLD	1		ISSUED					
5 GASKET	SILICONE	RED	1		SHEET	1 OF 1				
4 RETAINER RING	BER. COPPER	NATURAL	1					PART NO. 132182		
3 CONTACT PIN	BRASS	GOLD	1					DWG. NO. 132182.DWG		
2 INSULATOR	TEFLON	NATURAL	1					REV. D	SIZE A	SCALE NA
1 HOUSING/BODY	BRASS	GOLD	1							