

Excellent Integrated System Limited

Stocking Distributor

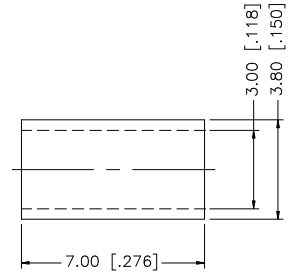
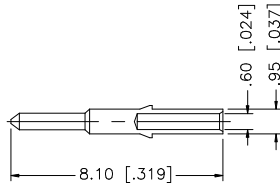
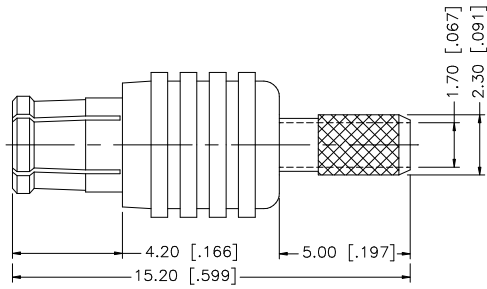
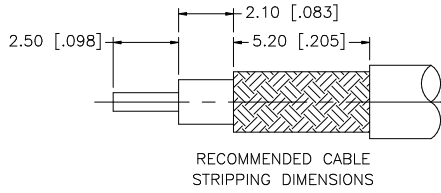
Click to view price, real time Inventory, Delivery & Lifecycle Information:

[Amphenol RF](#)
[252103](#)

For any questions, you can email us directly:

sales@integrated-circuit.com

REV.	DATE	DESCRIPTION
A	01/13/99	UPDATE DRAWING
B	05/01/04	UPDATE DRAWING FORMAT
C	11/28/06	NOTE 2: CONTACT PIN TO SOLDER.



NOTE:
 1. CRIMPED FERRULE HEX CRIMP SIZE .128"
 2. CONTACT PIN TO SOLDER.

DESCRIPTION	MATERIAL	FINISH	QTY	DO NOT SCALE DRAWING	APPROVALS	DATE	<h2 style="text-align: center;">Amphenol Connex</h2> <p style="text-align: center;">MCX CRIMP PLUG (FOR RG-174/U,188A/U,316/U)</p>	
8					DRAWN	G.R.S.		11/28/06
7					CHECKED			
6					ISSUED			
5	FERRULE	COPPER	GOLD	1	SHEET	1 OF 1		
4	CONTACT PIN	BRASS	GOLD	1			PART NO.	
3	INSULATOR	TEFLON	NATURAL	1			252103	
2	BODY	BER, COPPER	GOLD	1				
1	HOUSING	BRASS	GOLD	1				
					CAD FILE	C:/252/252103.DWG	DWG. NO.	
							252103.DWG	
							REV. C	
							SIZE A	
							SCALE NA	

UNLESS OTHERWISE SPECIFIED DIMENSIONS ARE IN MILLIMETERS DIMENSIONS IN [] ARE IN INCHES AND FOR CUSTOMER REFERENCE ONLY.

UNLESS OTHERWISE SPECIFIED TOLERANCES FOR MILLIMETERS ARE:
 0.5 - 8mm ± 0.20mm
 8 - 30mm ± 0.40mm
 30 - 120mm ± 0.50mm

UNLESS OTHERWISE SPECIFIED TOLERANCES FOR INCHES ARE:
 .020 - .315 = ± 0.007"
 .315 - 1.180 = ± 0.015"
 1.180 - 4.724 = ± 0.020"