

Excellent Integrated System Limited

Stocking Distributor

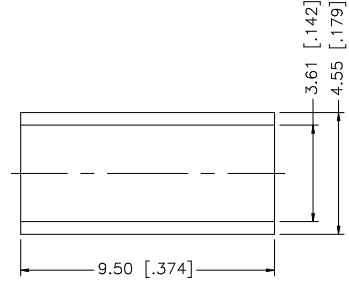
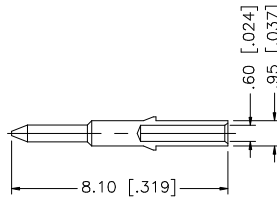
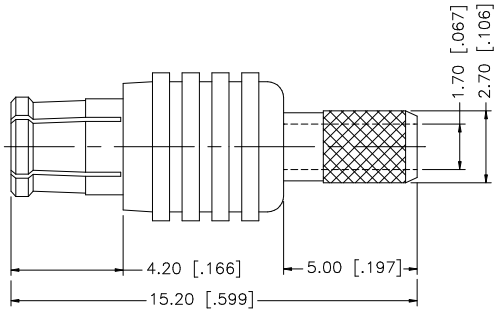
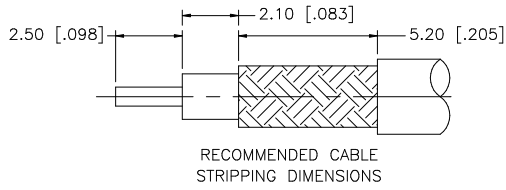
Click to view price, real time Inventory, Delivery & Lifecycle Information:

[Amphenol RF](#)
[252121](#)

For any questions, you can email us directly:

sales@integrated-circuit.com

REV.	DATE	DESCRIPTION
A	01/13/99	ADD CRIMP NOTES / CHANGE FERRULE DIMS.
B	07/20/05	UPDATE DRAWING FORMAT
C	10/31/05	MODIFY CRIMP NOTES
D	02/15/07	REVISE BARREL O.D. , FERRULE DIA.



NOTE:

1. CRIMPED FERRULE HEX CRIMP SIZE .151"
2. CRIMPED CONTACT PIN SQ. CRIMP SIZE 0.7(Mmm)

8				UNLESS OTHERWISE SPECIFIED DIMENSIONS ARE IN MILLIMETERS. DIMENSIONS IN [] ARE IN INCHES AND FOR CUSTOMER REFERENCE ONLY.	APPROVALS	DATE	Amphenol Connex
7				UNLESS OTHERWISE SPECIFIED TOLERANCES FOR MILLIMETERS ARE: 0.5 - 8mm ± 0.20mm 8 - 30mm ± 0.40mm 30 - 120mm ± 0.50mm	DRAWN G.R.S.	02/15/07	
6				UNLESS OTHERWISE SPECIFIED TOLERANCES FOR INCHES ARE: .020 - .315 = ± 0.007" .315 - 1.180 = ± 0.015" 1.180 - 4.724 = ± 0.020"	CHECKED		PART NO. 252121
5	FERRULE	COPPER	GOLD	1	ISSUED		
4	CONTACT PIN	BRASS	GOLD	1	SHEET 1 OF 1		REV. D
3	INSULATOR	TEFLON	NATURAL	1	CAD FILE C:/252/252121.DWG		SIZE A
2	BODY	BER. COPPER	GOLD	1			SCALE NA
1	HOUSING	BRASS	GOLD	1			
	DESCRIPTION	MATERIAL	FINISH	QTY	DO NOT SCALE DRAWING		