

Excellent Integrated System Limited

Stocking Distributor

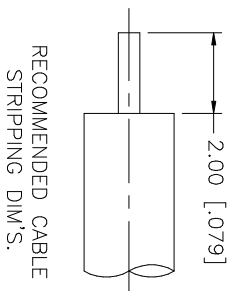
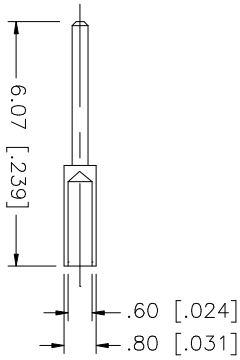
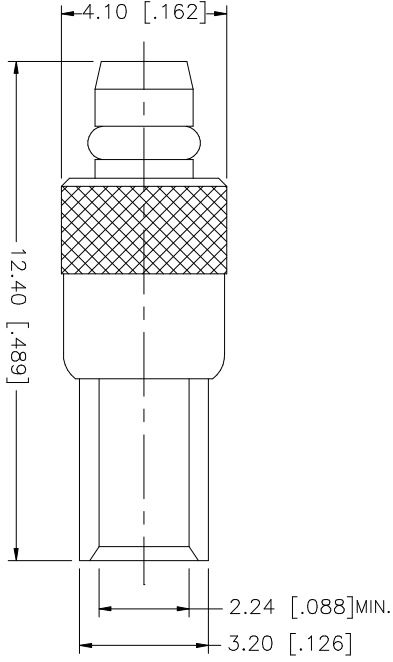
Click to view price, real time Inventory, Delivery & Lifecycle Information:

[Amphenol RF](#)
[262112](#)

For any questions, you can email us directly:

sales@integrated-circuit.com

REV.	DATE	DESCRIPTION
A	12/09/03	UPDATE DRAWING FORMAT



NOTES:
 1. CONTACT PIN TO SOLDER

QTY	DESCRIPTION	MATERIAL	FINISH	QTY	DO NOT SCALE DRAWING	APPROVALS	DATE	PART DESCRIPTION	DWG. NO.	REV.	SIZE	SCALE
1	INSULATOR	TEFLON	NATURAL	1				Amphenol Connex MMCX SEMI-RIGID PLUG (FOR .085", .086" CABLE)	262112.DWG	A	A	NA
1	BODY	BRASS	GOLD	1								
1	CONTACT PIN	BRASS	GOLD	1								
1	RETAINER RING	BER. COPPER	GOLD	1								
8												
UNLESS OTHERWISE SPECIFIED DIMENSIONS ARE IN MILLIMETERS. DIMENSIONS IN INCHES ARE FOR CUSTOMER REFERENCE ONLY. TOLERANCES FOR MILLIMETERS ARE: 0.5 - 8mm ± 0.20mm 8 - 30mm ± 0.40mm 30 - 120mm ± 0.50mm UNLESS OTHERWISE SPECIFIED TOLERANCES FOR INCHES ARE: .020 - .315 = ± 0.007" .315 - 1.180 = ± 0.015" 1.180 - 4.724 = ± 0.020"												
CAD FILE						C:/262/262112.DWG						
DRAWN						G.R.S.	12/09/03					
CHECKED												
ISSUED												
SHEET						1 OF 1						