

Excellent Integrated System Limited

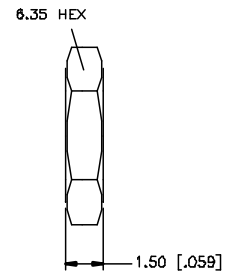
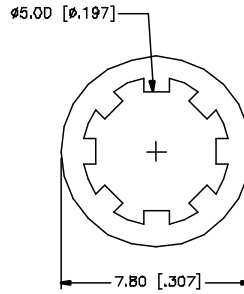
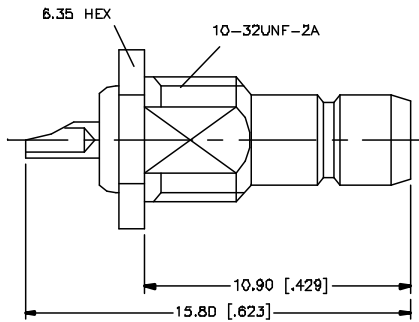
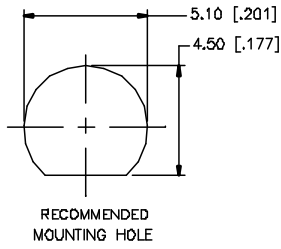
Stocking Distributor

Click to view price, real time Inventory, Delivery & Lifecycle Information:

[Amphenol RF](#)
[142152](#)

For any questions, you can email us directly:
sales@integrated-circuit.com

REV.	DATE	DESCRIPTION
NC	05/01/04	INITIAL RELEASE



DESCRIPTION	MATERIAL	FINISH	QTY	UNLESS OTHERWISE SPECIFIED DIMENSIONS ARE IN MILLIMETERS DIMENSIONS IN INCHES ARE IN PARENTHESES FOR CUSTOMER REFERENCE ONLY.	APPROVALS	DATE	Amphenol Connex
8					DRAWN	G.R.S.	
7					CHECKED		
6					ISSUED		
5	HEX NUT	BRASS	NICKEL	1	SHEET	1 OF 1	PART DESCRIPTION
4	LOCK WASHER	BRASS	NICKEL	1			SMB BULKHEAD RECEPT. JACK
3	CONTACT PIN	BRASS	GOLD	1			PART NO.
2	INSULATOR	TEFLON	NATURAL	1			142152
1	BODY	BRASS	NICKEL	1			
					CAD FILE	C:/142/142152.DWG	DWG. NO. 142152.DWG
				DO NOT SCALE DRAWING			REV. NC SIZE A SCALE NA

UNLESS OTHERWISE SPECIFIED DIMENSIONS ARE IN MILLIMETERS DIMENSIONS IN INCHES ARE IN PARENTHESES FOR CUSTOMER REFERENCE ONLY.

UNLESS OTHERWISE SPECIFIED TOLERANCES FOR MILLIMETERS ARE:
 0.5 - 8mm ± 0.20mm
 8 - 30mm ± 0.40mm
 30 - 120mm ± 0.50mm

UNLESS OTHERWISE SPECIFIED TOLERANCES FOR INCHES ARE:
 .020 - .315 ± 0.007"
 .315 - 1.180 ± 0.015"
 1.180 - 4.724 ± 0.020"