

Excellent Integrated System Limited

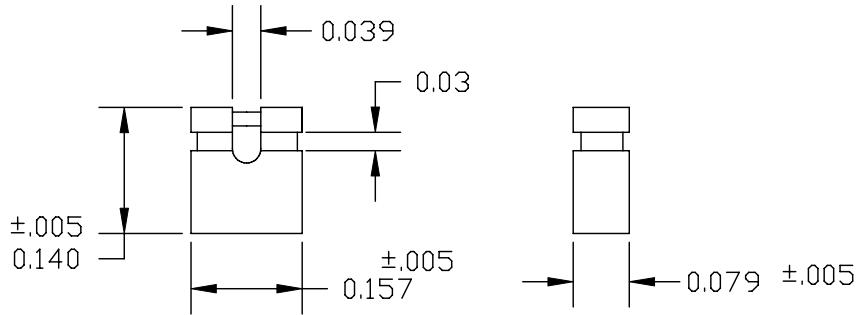
Stocking Distributor

Click to view price, real time Inventory, Delivery & Lifecycle Information:

[NorComp](#)
[810-002-SP2L001](#)


For any questions, you can email us directly:
sales@integrated-circuit.com

DESCRIPTION: 2MM SHUNT STANDARD PROFILE, .140"



MATERIAL: HOUSING: 30± GLASS FILLED PBT (UL 94V-0) BLACK
 CONTACT: 5191 PHOSPHOR BRONZE
 PLATING: GOLD FLASH
 RoHS COMPLIANT

ELECTRICALS: CURRENT RATING: 3.0 AMPERE MAX.
 CONTACT RESISTANCE: 30 MILLIOHM MAX.
 DIELECTRIC WITHSTANDING VOLTAGE: 650V AC RMS AT SEA LEVEL
 INSULATION RESISTANCE: 1000 MOHMS MAX.
 OPERATING TEMP: -55°C TO 105°C

| | | | | |
|---|---|-------------------------|-----------------------|------------------|
|  NorComp | THESE DRAWINGS AND SPECIFICATIONS ARE THE PROPERTY OF NorComp AND SHALL NOT BE REPRODUCED, COPIED OR USED AS THE BASIS FOR THE MANUFACTURE OF SALE OF APPARATUS WITHOUT WRITTEN PERMISSION. | | DRAWN: PAM JENKINS | DATE: 1-17-06 |
| | | | CHECKED: | DATE: |
| | | SCALE: NTS | SHEET 1 OF 1 | REV 1 |
| | | DWG NO. 810-002-SP2L001 | | |