

Excellent Integrated System Limited

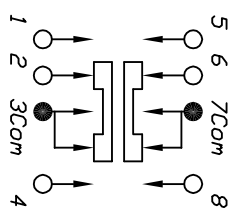
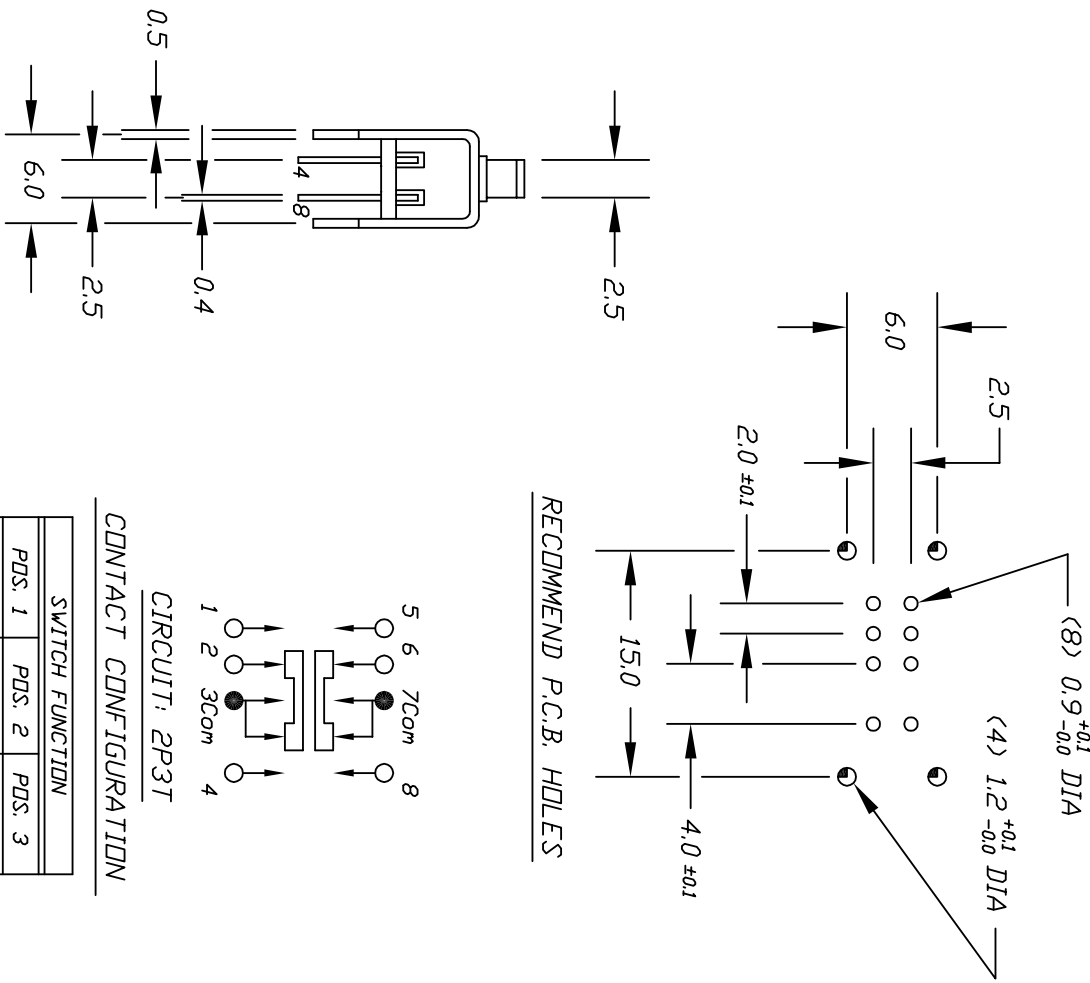
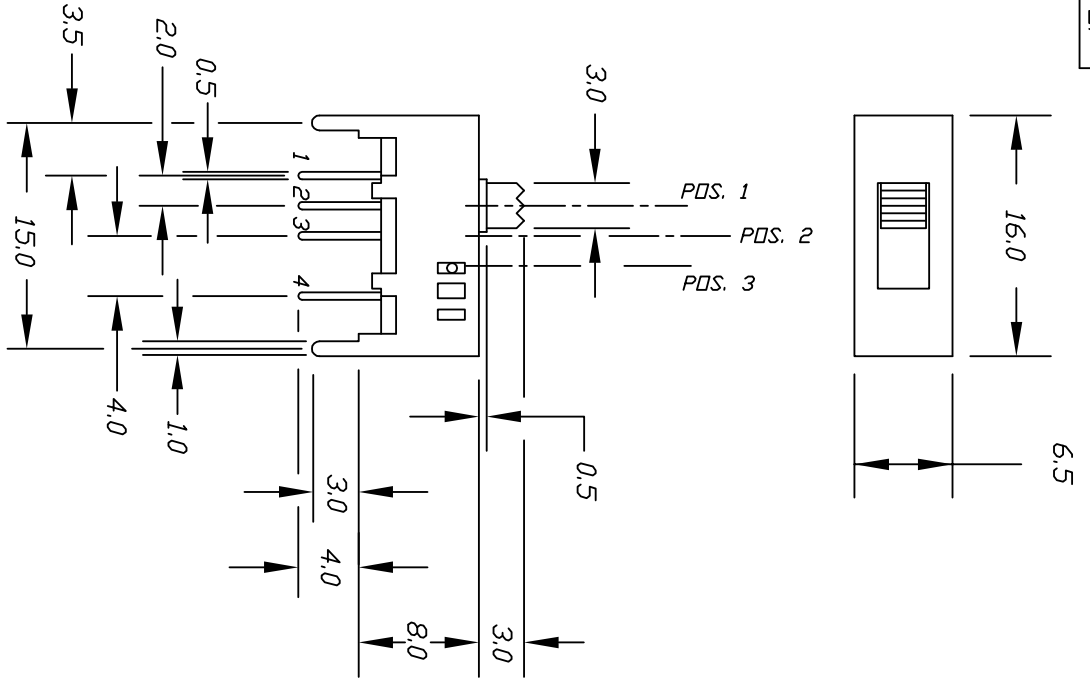
Stocking Distributor

Click to view price, real time Inventory, Delivery & Lifecycle Information:

[E-Switch](#)
[EG2301](#)

For any questions, you can email us directly:

sales@integrated-circuit.com



CONTACT CONFIGURATION

SWITCH FUNCTION		
PDS. 1	PDS. 2	PDS. 3
3-1	3-2	3-4
7-5	7-6	7-8

NOTES:

1. ALL DIMENSIONS IN MM (IN)
2. TERM. NOS. FOR REF ONLY
3. RATING: DC 30V, 0.2A
4. TRAVEL: 2.0mm TYP.
5. TIMING: NON-SPECIFIED
6. 2002/95/EC (ROHS) COMPLIANT

C	ADD TIMING NOTE	1/15/09	BLR
B	REVISED & REDRAWN		
REV.	DESCRIPTION	DATE	CHKD

TOLERANCES	
0.0	±0.4
0.00	±0.25

SCALE	TITLE	DATE	DR	DWG	REV
2:1	EG 2301	1/15/09	BLR	P040180	C

THE INFORMATION CONTAINED IN THIS DOCUMENT IS PROPRIETARY TO E-SWITCH AND IS NOT TO BE COPIED OR TRANSFERRED