

## **Excellent Integrated System Limited**

Stocking Distributor

Click to view price, real time Inventory, Delivery & Lifecycle Information:

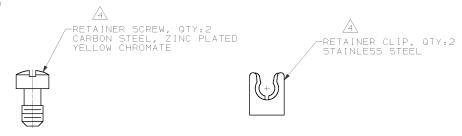
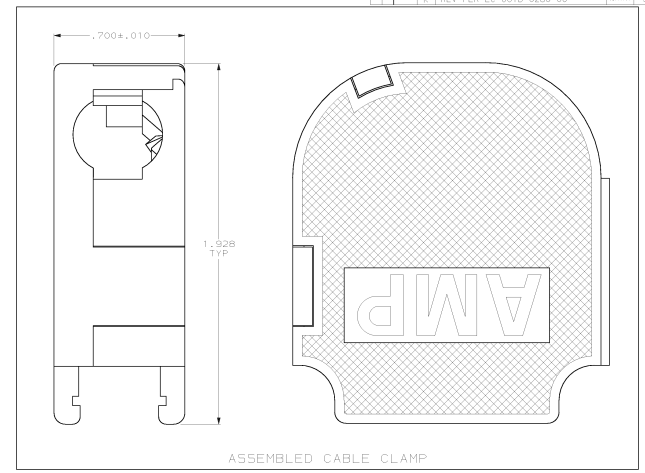
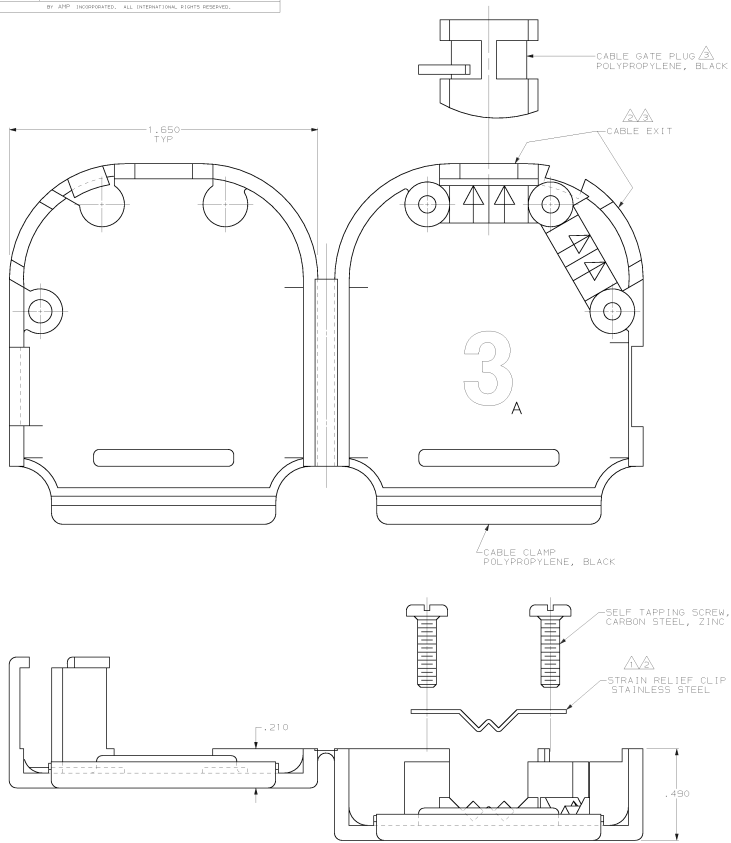
[TE Connectivity AMP Connectors](#)  
[749626-2](#)

For any questions, you can email us directly:

[sales@integrated-circuit.com](mailto:sales@integrated-circuit.com)

PRINTING MADE IN THESE ANGLES PROJECTION  
 THIRD PARTY PROPRIETARY RIGHTS RELEASED FOR PUBLICATION  
 © COPYRIGHT 19 BY AMP INCORPORATED. ALL INTERNATIONAL RIGHTS RESERVED.

REV	DATE	DESCRIPTION	BY	CHKD
A	REVISED	ECN-BD3163		
B	REV ECN 803469	ADDED -2 APR 2593		
C	REVISED PER ECN 803542			
D	REV PER ECN 803719			
E	REV PER ECN 804230			
F	REV PER ECN 804313			
G	REVISED PER ECN 805892			
H	REV PER ECN 805736			
J	REV PER ECN 0020-1343-93			
K	REV PER ECN 0020-0260-00			



- ⚠️ CLIP CAN BE INSTALLED AS SHOWN FOR SMALL DIAMETER CABLE, OR REVERSED FOR LARGE DIAMETER CABLE.
- ⚠️ CLIP MAY BE USED AT EITHER CABLE EXIT.
- ⚠️ CABLE GATE PLUG TO BE PLACED IN CABLE EXIT NOT BEING USED.
- ⚠️ RETAINER SCREWS AND RETAINER CLIPS PROVIDED WITH THIS KIT FOR USE WITH METAL SHELL CONNECTORS.
- 5. CABLE DIAMETER RANGE = .180-.460.

SUPERSEDED BY 749626-2	SMALL PACK	749626-3
	UNIT KIT	749626-2
	BULK PACKED	749626-1
	PACKAGING	PART NO

DO NOT SCALE PRINTING. DIMENSIONS SPECIFIED IN INCHES. TOLERANCES ON + 3 PLG DEC ± .005 ANGLES	OR D32B/89 3.46L/08 CHC 2625/89 8.31/08 AFRO 8125/83 5.5/SCHIEFFEL 1/31/83	AMP INCORPORATED
SEE CALLOUTS	PRODUCT SPEC	CABLE CLAMP KIT, UNASSEMBLED, SIZE 3, QUICK-SNAP™, 120° & 180° CABLE EXIT, AMPLIMITIE®
FINISH	APPLICATION SPEC	STEEL
SEE CALLOUTS	HEIGHT	F30R NO 00779 DRAWING NO 749626
		SCALE 4:1 SHEET 1 OF 1