

Excellent Integrated System Limited

Stocking Distributor

Click to view price, real time Inventory, Delivery & Lifecycle Information:

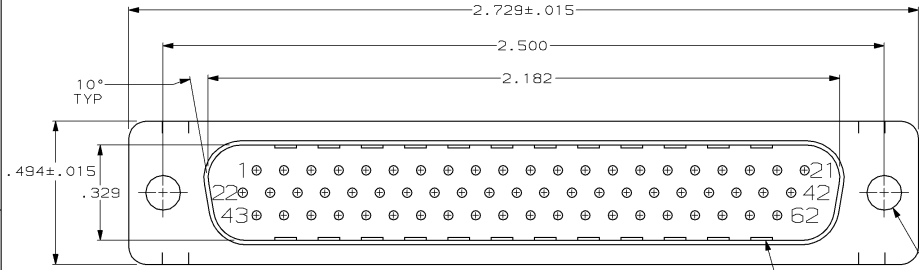
[TE Connectivity AMP Connectors](#)
[748367-1](#)

For any questions, you can email us directly:

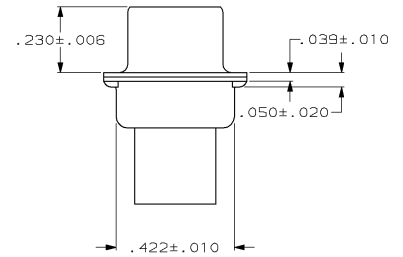
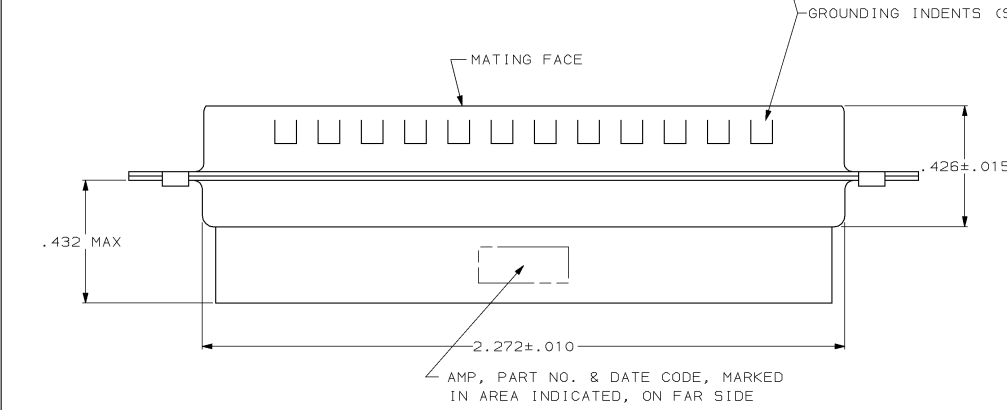
sales@integrated-circuit.com

DRAWING MADE IN THIRD ANGLE PROJECTION
 THIS DRAWING IS UNPUBLISHED. RELEASED FOR PUBLICATION
 © COPYRIGHT 19 BY AMP INCORPORATED, HARRISBURG, PA. ALL INTERNATIONAL RIGHTS RESERVED. AMP PRODUCTS MAY BE COVERED BY U.S. AND FOREIGN PATENTS AND/OR PATENTS PENDING.

LOC	DIST	P	F	ZONE	LTR	REVISIONS	DATE	APPROVED
BD	48					Q REL WAS 86-5528-3	-	-
					A	ADDED -2 PER NPR 2395	05/08/86	LB
					B	OBS -2 PER EC 0020-734-95	31 JAN 88	CS



- CONNECTOR ACCEPTS SIZE 22 DF PIN CONTACTS, RETENTION TINES ARE AN INTEGRAL PART OF INSERT.
- FLAME RETARDANT 94V-0 RATED GLASS FILLED NYLON, COLOR: BLACK.
- STEEL PER ASTM A109.
- TIN PLATED PER MIL-T-10727.



OBSELETE	NO	748367-2
	YES	748367-1
	GROUNDING INDENTS	PART NUMBER

UNLESS OTHERWISE SPECIFIED DIMENSIONS ARE IN INCHES TOLERANCES ON: 2 PL DEC ± .005 3 PL DEC ± .005 ANGLES ± 2°	DR 12-3-86 C.RICHARD	AMP INCORPORATED Harrisburg, Pa. 17105		
	CHK 12-4-86 S.WELDON			
	MATERIAL MOLDED PARTS: SHELLS:	APPD 12-4-86 L.BREKOSKY V.KUMAR PRODUCT SPEC	NAME PLUG CONNECTOR, SIZE 4, 62 POSN, AMPLIMITE® HDP-22	
	FINISH SHELLS:	APPLICATION SPEC - WEIGHT -	SIZE C	FSCM NO 00779

AMP 1471-7 REV 10-84

CUSTOMER DRAWING

748367